

KAIFENG

KAIFENG INVESTMENT GUIDE

开封 投资指南

开封市人民政府
KAIFENG MUNICIPAL PEOPLES GOVERNMENT



中国·开封

开封市发展和改革委员会编制

COMPILED BY KAIFENG DEVELOPMENT AND REFORM COMMISSION

[Http://www.kfdrc.gov.cn](http://www.kfdrc.gov.cn)



画册目录

The business goal

走进开封 Walking into Kaifeng	002
历史沿革 History	005
区位·交通 Location· Transportation	006
市属资本运营公司 Municipal capital operation company	026
县区发展概况 General situation of county development	036
投资环境 Investment Environment	080
投资政策 Investment policy	082
文化旅游 Culture and tourism	086
特色农业 Characteristic Agriculture	092
教育卫生 Education and health	096



走进开封

WALKING INTO KAIFENG

开封地处豫东平原，北依黄河，是我国八大古都之一、全国首批历史文化名城、中国优秀旅游城市、国家卫生城市、国家园林城市、全国“双拥”模范城和中国书法名城、中国菊花名城、中国收藏文化名城、中国茶文化名城、中国成语典故名城。全市总面积6266平方公里，总人口550万人，现辖尉氏、杞县、通许、兰考4县和城乡一体化示范区、祥符区、禹王台区、鼓楼区、龙亭区、顺河回族区6区。

2021年，全市生产总值完成2557.03万元、增长7.2%、居河南省第5位，社会消费品零售总额完成1112.52亿元、增长11.4%、居河南省第1位，固定资产投资增长13.1%、居河南省第3位，一般公共预算收入完成179.27亿元、增长14.1%、居河南省第4位，规模以上工业增加值增长8.7%、居河南省第7位。

目前，开封面临黄河流域生态保护和高质量发展、郑开同城化等一系列重大机遇，正以巨大的发展潜力，成为河南省乃至国家中部地区最具发展活力的城市之一。我们热忱欢迎各界人士来汴旅游观光、投资置业，感悟千年古都的厚重历史和灿烂文化，与我们一道携手并肩，为这座饱含历史、充满神韵的古都，实现共同发展。

Kaifeng is located in the Eastern Henan Plain and by the Yellow River to the north. It is one of our country's eight ancient capitals and one of the first batch of historical and cultural cities. It is an outstanding tourist city, a national health city, a national garden city, and a national "double support" model city. It is also a famous city of Chinese calligraphy, Chinese chrysanthemum, Chinese collection culture, Chinese tea culture and Chinese idioms allusions. The city has a total area of 6,266 square kilometers, a total population of 5.5 million, and a cultivated area of 5.91 million mu. It has jurisdiction over 4 counties and 6 districts, including Weishi County, Qi County, Tongxu County, and Lankao County, as well as the Urban-Rural Integration Demonstration Zone, Xiangfu District, and Yuwangtai District. , Gulou District, Longting District, Shunhe Hui District.

In 2021, the city's GDP reaches 25.5703 billion yuan, an increase of 7.2%, ranking fifth in Henan Province; the total retail sales of consumer goods reaches 111.252 billion yuan, an increase of 11.4%, ranking first in Henan Province; fixed asset investment increases by 13.1%, ranking third in Henan Province; general public budget revenue reaches 17.927 billion yuan, an increase of 14.1%, ranking fourth in Henan Province; and the added value of industries above designated size increases by 8.7%, ranking seventh in Henan Province.

At present, facing a series of major opportunities such as ecological protection and high-quality development of the Yellow River basin, and the integration of Zhengzhou and Kaifeng, Kaifeng is becoming one of the most dynamic cities in Henan Province and even in the central region of China with huge development potential. We warmly welcome people from all walks of life to visit Kaifeng, invest in real estate, and enjoy the profound history and splendid culture of the millennium ancient capital. Join hands with us to realize common development for this ancient capital full of history and charm.



历史沿革

HISTORY

Kaifeng is a city with a long history and rich heritage. It is one of the main birthplaces of the Chinese nation. So far, it has more than 4100 years of history of building the city. It is known as the "Ancient Capital of the Eight Dynasties": the Xia Dynasty, the Wei during the Warring States Period, the Later Liang, the Later Jin, the Later Han and the Later Zhou during Five Dynasties Period, the Northern Song Dynasty, and Jin Dynasty successively establishing the capital here. In addition, Kaifeng has nurtured many famous celebrities, such as Cai Yong, Cai Wenji, Cui Hao, Su Shi, Mi Fu, Shi Kefa, Zhao Jiuzhang, Feng Youlan, Jin Zhi, and a large number of historical figures with important influence, such as the honest and upright Bao Gong, the loyal Yang Jiajiang of Manchuria, the national hero Yue Fei, and Wang Anshi, who tried to strengthen the reform, which have had a significant impact on the development of Chinese history.

As the first dynasty in Chinese history, the Xia Dynasty established its capital 216 years ago in Laoqiu, Kaifeng, during the 470 years of its founding. During the Spring and Autumn Period, Duke Zheng Zhuang, the monarch of the State of Zheng, built a granary city here, which was named Qifeng in the meaning of "opening and expanding the frontier". The city of Kaifeng today was named Yiyi in the Spring and Autumn Period, Daliang in the Warring States Period. In the Western Han Dynasty Emperor Jing (156 BC), Qifeng was renamed Kaifeng in order to avoid the taboo of the Emperor Jing Emperor Liu Qi of the Han Dynasty. Today's Kaifeng City is the land of Daliang, the name of Kaifeng. Especially in the Northern Song Dynasty, after 168 years of the Nine Emperors, "the population exceeded one million, and the goods gathered from north to south", it was the political, economic, and cultural center of the country at that time, and it was also an international metropolis. The Northern Song Dynasty painter Zhang Zeduan's "Surfing the River on Qingming Festival" and Meng Yuanlao's "Dongjing Meng Hua Lu" vividly depict the prosperous scene of the ancient capital Kaifeng at that time. Three of four great inventions: movable type printing, gunpowder and compass, moved from Kaifeng to the world. Zhang Zeduan's Riverside Scene at Qingming Festival and Elder Meng's Reminiscences of the Eastern Capital vividly depict the prosperous scene of the ancient capital Kaifeng at that time. Kaifeng was the provincial seat of Henan in the Yuan Dynasty, the residence of King Zhou in the Ming Dynasty, and the capital of Henan in the Qing Dynasty and the Republic of China. Kaifeng was liberated in October 1948, and a brand new city grew and developed together with the Republic. In October 1954, the capital of Henan Province was moved from Kaifeng to Zhengzhou, and Kaifeng has been changed into a provincial city since then. Kaifeng, in the waves of history, is constantly writing new chapters, and will always glow with bright brilliance.

开封是一座历史悠久、底蕴厚重的城市，是中华民族的主要发祥地之一，迄今已有4100多年的建城史和建都史，夏朝老丘，战国时期的魏，五代时期的后梁、后晋、后汉、后周，宋朝，金朝等相继在此定都，素有“八朝古都”之称。孕育出蔡邕、蔡文姬、崔颢、苏轼、米芾、史可法以及赵九章、冯友兰、靳志等众多名人名家，涌现出了清正廉明的包公、满门忠烈的杨家将、民族英雄岳飞、图强变法的王安石等一大批具有重要影响的历史人物，对中国历史的发展产生了重大影响。

夏朝作为中国历史上第一个王朝，立国的470年中，在开封老丘建都216年。春秋时期，郑国君主郑庄公在此修筑储粮仓城，取“启拓封疆”之意，定名启封。今开封城春秋时期为仪邑，战国时期为大梁，西汉景帝时（公元前156年），为避汉景帝刘启之名讳，将启封更名为开封，今日之开封市即由大梁之地，启封之名发展演变而来。尤其是北宋时期，历经九帝168年，“人口逾百万，货物集南北”，是当时全国的政治、经济、文化中心，也是国际性的大都会，有着“琪树明霞五凤楼，夷门自古帝王州”、“汴京富丽天下无”的美誉。孕育了上承汉唐、下启明清、影响深远的“宋文化”，宫廷文化、府衙文化、戏曲文化、宋词文化、饮食文化、书法文化等驰名中外、影响深远，活字印刷术、火药和指南针从开封走向世界。北宋画家张择端的《清明上河图》和孟元老《东京梦华录》，生动地描绘了古都开封当时的繁华景象。元代开封为河南行省治所，明代为周王府，清代、民国为河南首府。1948年10月开封解放，一座崭新的城市伴随着共和国共同发展壮大。1954年10月，河南省省会由开封迁到郑州，开封改为省辖市至今。开封，在历史的浪涛中，不断谱写出新的篇章，将永远焕发出璀璨的光彩。



区位·交通

LOCATION·TRANSPORTATION

开封地处中原，西距省会郑州40多公里、距新郑国际机场50多公里，40分钟即可抵达中国八大枢纽机场之一的新郑国际机场，50分钟即可抵达郑州国际陆港，依托中欧班列(郑州)，联通欧洲、中亚、东盟及亚太地区。

开封属温带大陆性季风气候，四季分明，雨量适中，光照充足，年平均气温14.24-14.50度之间，无霜期213-215天，年降雨量平均670毫米，林木覆盖率高于全国水平。

开封市现有铁路3条，全长148公里；高速公路6条，全长471.4公里；国道5条，全长439.2公里；省道16条，全长800.1公里；农村公路全长7807.7公里，公路密度达到147.7公里/百平方公里。基本形成了以铁路、高速公路为骨架，干线公路为依托，农村公路为基础的交通网络。

徐兰高铁、陇海铁路、连霍高速、G310等组成的新亚欧大陆桥通道，大广高速、G106等组成大广通道，日南高速、G240等组成日南通道，郑州至南京高铁(规划)、G343组成的郑南通道在我市交汇叠加，形成了优越的交通区位条件。通过铁路、公路交通，东可至山东半岛，西可至天山北坡，南可至粤港澳大湾区，北可至东北地区，基本建成了面向国际、贯穿全国、辐射都市圈、城乡一体的区域性交通枢纽。



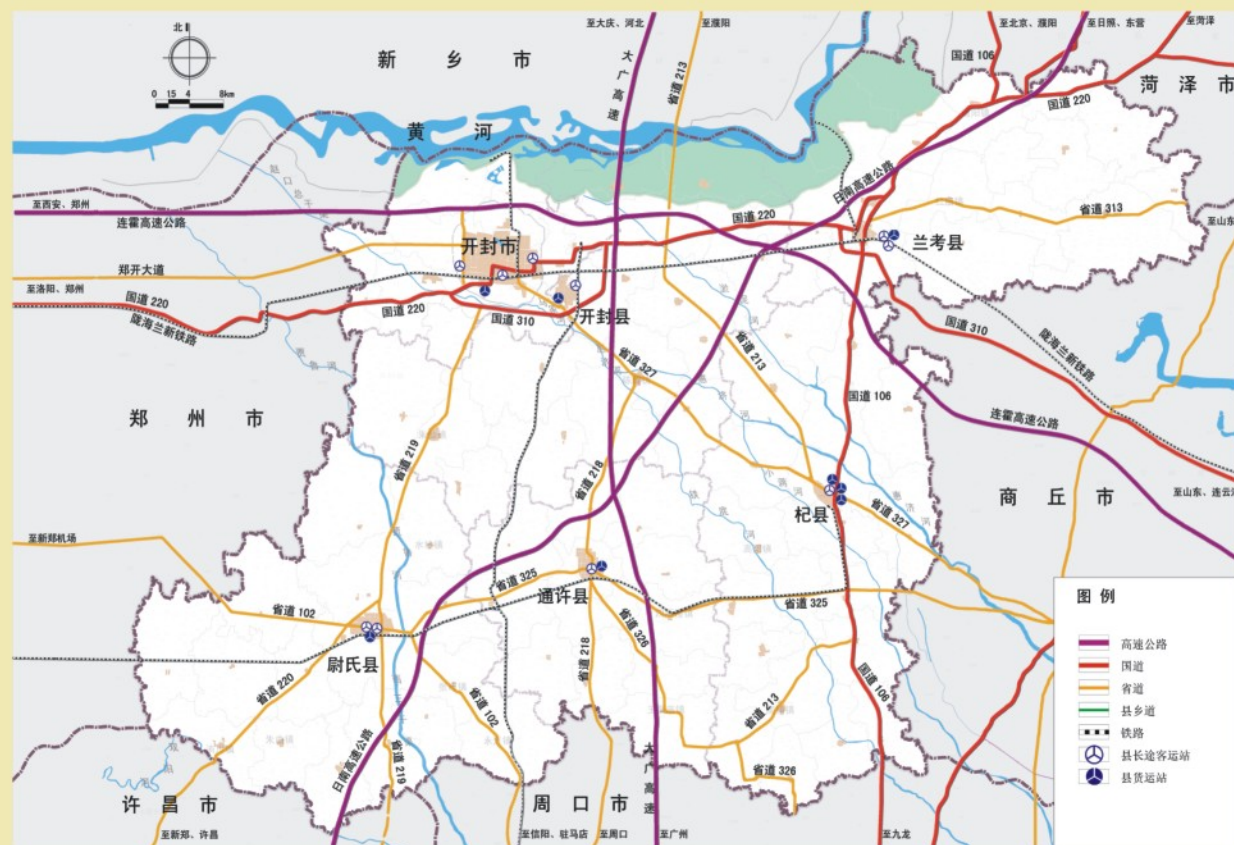
Kaifeng is located in the Central Plains, more than 40 kilometers west of Zhengzhou, the provincial capital, and more than 50 kilometers away from Xinzheng International Airport. It takes 40 minutes to reach Xinzheng International Airport, one of China's eight hub airports, and 50 minutes to reach Zhengzhou International Land Port. Relying on the China Europe Express (Zhengzhou), it connects Europe, Central Asia, ASEAN and the Asia Pacific region.

Kaifeng has a temperate continental monsoon climate with four distinct seasons, moderate rainfall and sufficient sunlight. The annual average temperature is 14.24-14.50 degrees. The frost free period lasts 213-215 days. The average annual rainfall is 670 mm. The forest coverage is higher than the national level.

There are 3 railways in Kaifeng, with a total length of 148 kilometers; There are 6 expressways with a total length of 471.4km; There are 5 national highways, with a total length of 439.2km; 16 provincial roads, 800.1 km in length; The total length of rural roads is 7807.7 km, and the road density is 147.7 km/100 km². A transportation network based on railways and expressways, trunk roads and rural roads has basically been formed.

The New Asia Europe Land Bridge (NAELB) channel (composing of Xuzhou-Lanzhou High-speed Railway, Lanzhou-Lianyungang Railway, Lianyungang-Khorgos Expressway, G310, etc.), the Daqing-Guangzhou channel (the Daqing-Guangzhou Expressway, G106, etc.), the Rizhao-Nanyang channel (the Rizhao-Nanyang Expressway, G240, etc.) and the Zhengzhou-Nanjing High speed Railway (planned), G343, etc. intersect and overlap in our city, forming superior traffic location conditions.

The railway and highway transportation make people in Kaifeng more accessible to the Shandong Peninsula in the east, the northern slope of Tianshan Mountain in the west, the Guangdong-Hong Kong-Macao Greater Bay Area in the south, and the northeast region in the north. A regional transportation hub that faces the world, runs through the country, radiates the metropolitan area, and integrates urban and rural areas has basically been built.





机遇环境

OPPORTUNITIES

近年来，开封先后被确定为中原经济区核心城市之一、郑州航空港经济综合实验区主体城市之一、中国（河南）自由贸易试验区建设片区之一、中原城市群核心发展区。2020年1月，习近平总书记在中央财经委员会第六次会议上指出，要“推进郑州与开封同城化，引领中原城市群一体化发展”。2021年省第十一次党代会明确提出“全面推进郑开同城化，并将兰考纳入郑开同城化进程”。



In recent years, Kaifeng has been identified as one of the core cities of the Central Plains Economic Zone, one of the main cities of Zhengzhou Airport Economic Comprehensive Experimental Zone, one of the construction areas of China (Henan) Pilot Free Trade Zone, and the core development area of the Central Plains urban agglomeration. In 2021, the 11th Party Congress of Henan Province clearly proposed to "comprehensively promote the urbanization of Zhengzhou-Kaifeng and bring the Lankao into the process of urbanization of Zhengzhou-Kaifeng".



一带一路 创新发展

"THE BELT AND ROAD" AND INNOVATIVE DEVELOPMENT

作为古丝绸之路的重要发源地和“一带一路”重要节点省，河南在“一带一路”战略格局中的地位举足轻重。习近平总书记殷切希望，河南建成连通境内外、辐射东中西的物流通道，为丝绸之路经济带建设多做贡献。开封地处中原腹地，北宋时期为丝绸之路的东起点城市，是当时世界上最繁华的大都会。如今，开封凭借深厚的历史文化积淀，在“一带一路”旅游版图中占有举足轻重的地位。国家“一带一路”战略，为开封全面提高经济外向度、实现经济社会的跨越发展提供了重大机遇。在推进“一带一路”的建设中，开封既抢抓机遇求突破，又传承创新抓优势，正努力成为“一带一路”经济带上的一颗耀眼明珠。抢抓“一带一路”战略机遇，实行更加积极的开放战略，创新开放型经济发展模式，努力探索内陆开放高地建设新路径，为构建互利共赢、多元平衡、安全高效的开放型经济体系奠定坚实基础。

As an important birthplace of the ancient Silk Road and an important node province of the "the Belt and Road", Henan has a pivotal position in the strategic pattern of "the Belt and Road". General Secretary Xi Jinping earnestly hopes that Henan will build a logistics channel connecting the country and abroad, radiating east, middle and west, and make more contributions to the construction of the Silk Road Economic Belt. Kaifeng is located in the hinterland of the Central Plains. It was the eastern starting point of the Silk Road during the Northern Song Dynasty and was the most prosperous metropolis in the world at that time. Today, Kaifeng, with its profound historical and cultural accumulation, occupies a pivotal position in the "Belt and Road" tourism map. "The Belt and Road" strategy provides a major opportunity for Kaifeng to comprehensively improve its export and achieve leap-forward development in economy and society. In advancing the "Belt and Road" construction, Kaifeng not only seizes opportunities for breakthroughs, but also inherits innovation and advantages, and is striving to become a dazzling pearl on the "Belt and Road" economic belt. Seize the strategic opportunity, implement a more active opening strategy, innovate an open economic development model, and strive to explore new paths for the construction of inland open highlands, lay a solid foundation for building an open economic system that is mutually beneficial, diversified, balanced, safe and efficient.



开封市借力“一带一路”战略，实施开放发展，促进国际友好城市建设，协同推进战略互信、经贸合作、人文交流；发挥“一带一路”城市旅游联盟带动作用，加强文化、旅游、产业等多方面对接，实现更高层次、更高水平的合作与交流；鼓励优势企业“走出去”，打通现代产业出口贸易新通道；加强口岸建设，积极对接国际市场；积极推进河南自贸试验区开封片区、保税物流中心、跨境电子贸易等开放平台，构建统一开放、竞争有序、内外融合的国际化现代流通体系。利用郑欧班列对外开放平台，发展铁海联运、公铁联运，向东实现与海上丝绸之路相连接，向西与丝绸之路经济带相融合。

在农业领域，以玉米、棉花良种繁育和畜禽规模化养殖为重点，深化与“一带一路”沿线国家和地区在良种繁育、农业设施及配套适用技术等领域的合作，建设现代农业基地。鼓励优势企业在中亚和东南亚国家布局建设畜禽加工、粮油加工、棉纺等生产基地，形成与中高端产品配套的稳定供应链关系。

在工业领域，加强与“一带一路”沿线国家和地区在机械、纺织、食品和设备制造等领域联合建厂、技术合作和产品深加工等方面的合作，促进产业转型和升级。

在物流业领域，发挥开封交通区位优势，积极引进和建设对接新郑国际机场、郑欧国际班列、国际陆港、海港等对外平台和大型物流园区、专业物流中心等重大项目，打造“一带一路”物流枢纽，构建“一带一路”便捷物流通道。

在商贸领域，推动开封商业“国际”化高端发展，积极引进国内外商业龙头企业，努力打造开封“国际商贸城”。对接郑州国际商都，实现开封商贸业与郑州国际商都融合发展，与郑州共建郑汴“商业走廊”。



Kaifeng City relies on “the Belt and Road” strategy to implement open development, promote the construction of international friendly cities, and coordinate the promotion of strategic mutual trust, economic and trade cooperation, and cultural exchanges, to achieve higher-level cooperation and exchanges, encourage superior enterprises to “go global” and open up new channels for modern industrial export trade. It also strengthens port construction and actively connect with the international market, actively promote the Kaifeng area of Henan Pilot Free Trade Zone. It bonds logistics centers, cross-border electronic trade and other open platforms to build an international modern circulation system that is unified, open, competitive, and integrated internally and externally. Use the Zhengzhou-Europe train to open up the platform to develop rail-sea combined transportation and road-rail combined transportation to realize the connection with the Maritime Silk Road to the east and the integration with the Silk Road Economic Belt to the west.

In the agricultural field, Kaifeng focuses on the breeding of corn and cotton varieties and the large-scale breeding of livestock and poultry, deepens cooperation with countries and regions along “the Belt and Road” in the areas of breeding, agricultural facilities and supporting applicable technologies, and builds modern agricultural bases. It also encourages superior enterprises to build production bases for livestock and poultry processing, grain and oil processing, and cotton spinning in Central and Southeast Asian countries to form a stable supply chain relationship with mid-to-high-end products.

In the industrial field, Kaifeng strengthens cooperation with countries and regions along “the Belt and Road” in the fields of machinery, textiles, food and equipment manufacturing, technical cooperation, and product deep processing to promote industrial transformation and upgrading.

In the field of commerce, Kaifeng promotes the “international” high-end development of the commerce, actively introduces leading domestic and foreign commercial enterprises, and strives to build Kaifeng’s “International Trade City”. It connects with Zhengzhou’s international commercial capital, realizes the integrated development of Kaifeng’s commercial and trade industry and Zhengzhou’s international commercial capital, and jointly builds the Zheng-Bian “Commercial Corridor” with Zhengzhou.



郑开同城化

ZHENGZHOU-KAIFENG CO-URBANIZATION

郑开同城化是习近平总书记站位沿黄中心城市及城市群高质量发展做出的重大部署。郑州和开封两市地缘相近、人缘相亲、文缘相通，历史同脉、产业互补，具有得天独厚的同城化发展优势。十多年来，顺应城镇化发展客观规律和国家、省区域发展政策的引导，郑汴一体化先后经历省级战略阶段，中原经济区国家战略阶段，中原城市群、国家中心城市、都市圈带动发展阶段，最终从郑汴一体化升级为郑开同城化。2012年，两市签署《关于进一步加快推进郑汴一体化发展的框架协议》，积极推进两市“五同城一共享”。2016年，两市达成了共同推进“533”工程建设共识，加快推进开港大道、科学大道、沿黄大道、G310线南移、郑开地铁对接等五条通道建设，推动汽车产业、旅游业、产学研三大产业对接，推动自贸区郑开片区、郑汴港区域、沿黄生态区等三大区域协同发展，着力推动与郑州都市圈规划衔接、交通一体、产业协同、创新开放、生态共建、资源共享和功能对接。2019年郑开两市达成了优先推动郑汴一体化的共识，商定了郑汴一体化深度发展的基本思路。2019年9月18日，习近平总书记在郑州主持召开座谈会并发表重要讲话，黄河流域生态保护和高质量发展上升为重大国家战略，中央财经委第六次会议明确要推进郑州与开封同城化，引领中原城市群一体化发展。总书记的一系列重要讲话，为郑开同城化发展指明了方向、提供了根本遵循。省委全会、省委经济工作会议进行专门部署，郑开两市积极对接协商，提高站位、打开视野，在全国发展大局中找准定位，谋划建设规划、交通、科创、产业、生态、公共服务等“六同城”，启动郑开大道快速化改造等一批先导性工程，切实回应两市人民共同关切和期盼，以实际行动、创新举措把习近平总书记重要讲话精神和省委要求贯彻落实好。

在郑州都市圈发展建设中，由郑州主城区、郑州航空港经济综合实验区、开封市主城区共同组成的郑汴港核心引擎区，是我省经济发展最活跃、开放程度最高、创新能力最强的区域之一，是集中体现大都市区国际竞争力和影响力的区域，最有条件实现区域一体化、最有条件率先实现现代化、最有条件建设国际化中心城市。加快推进郑开同城化，能够最有效助力郑州国家中心城市建设，继续引领全省区域一体化发展实践；有利于打破行政区划对发展的制约，在更大范围、更广视野谋划区域发展框架和功能布局；有利于加快构建郑州都市圈，提升区域经济整体能级和效率；有利于增进两地人民的民生福祉和幸福感获得感，实现共生共享共荣。开封市认真贯彻落实习近平总书记的殷殷嘱托，重点围绕郑开同城化先行示范区规划建设、交通互联互通、生态共治共享、产业共引共建、公共服务共认共享，统筹黄河流域生态保护和高质量发展、宋都古城保护与修缮，强力推进郑州与开封同城化发展，实现我市在中部地区崛起中争先进位，奋力谱写中原更加出彩的开封绚丽篇章。郑开同城化具有前所未有的发展机遇和最优投资环境，期待着天下有志之士共谋发展！

The Zhengzhou-Kaifeng Co-urbanization is a major deployment made by General Secretary Xi Jinping for the high-quality development of central cities and urban agglomerations along the Yellow River. The two cities are close in land, people and culture. They have the same history and complementary industries, and unique advantages in integrated development. For more than ten years, in conformity with the objective laws of urbanization development and the guidance of national and provincial regional development policies, Zheng-Bian Integration has experienced the provincial strategic stage, the national strategic stage of the Central Plains Economic Zone, and the Central Plains urban agglomeration, the national central city, and driven development of the metropolitan area. The Zheng-Bian Integration was finally upgraded to the Zhengzhou-Kaifeng Co-urbanization. In 2012, the two cities signed the "Framework Agreement on Further Accelerating the Integrated Development of Zheng-Bian" to actively promote the "Five Co-urbanizations and One Sharing" of the two cities. In 2016, the two cities reached a consensus on jointly advancing the construction of the "533" project, accelerating the construction of five corridors including Kaigang Avenue, Science Avenue, Yanhuang Avenue, G310 Line southward, and Zhengkai subway docking, and promoted the docking of three major industries: automobile industry, tourism, the combination of production, education and research to promote the coordinated development of the Zhengkai area in the free trade zone, the Zhengbian port area, and the ecological zone along the Yellow River, to promote the planning connection with Zhengzhou Metropolitan Area, transportation integration, industrial coordination, innovation and opening, ecological co-construction, resource sharing and functional docking. In 2019, Zhengzhou and Kaifeng reached a consensus to give priority to the integration of Zhengzhou and Bianzhou, and agreed on the basic ideas for the in-depth development of Zhengzhou and Bianzhou integration. On September 18, 2019, General Secretary Xi Jinping presided over a symposium in Zhengzhou and delivered an important speech, which emphasize that the ecological protection and high-quality development of the Yellow River Basin has become a major national strategy. The sixth meeting of the Central Finance and Economics Committee clearly promoted the co-urbanization of Zhengzhou and Kaifeng to lead the integrated development of the Central Plains urban agglomeration. A series of important speeches of the General Secretary pointed out the direction and provided fundamental principals for the development of Zheng Kai's co-urbanization. The Plenary Session of the Provincial Party Committee and the Economic Work Conference of the Provincial Party Committee carried out special arrangements to promote the active coordination and negotiation of the two cities, by improving their positions, opening up their horizons, pinpointing their positions and planned ideas in the overall development of the country, and forming "five cities" consensus of planning, transportation, industry, ecology, and Public services, planning for ten iconic projects including the rapid transformation of Zhengkai Avenue, and earnestly responding to the common concerns and expectations of the people of the two cities, and using practical actions and innovative measures to implement the spirit of General Secretary Xi Jinping's important speech and the requirements of the Provincial Party Committee. In the development and construction of the Zhengzhou metropolitan area, the Zhengzhou-Biangang Core Area, which is composed of the main urban area of Zhengzhou, the Zhengzhou Airport Economic Comprehensive Experimental Zone, and the main urban area of Kaifeng City, is the most active economic development, the highest degree of openness, and the strongest innovation ability in our province. It's a region that intensively reflects the international competitiveness and influence of metropolitan areas. It has the most conditions to achieve regional integration, to take the lead in modernization, and to build an international central city. Accelerating the co-urbanization of Zhengzhou and Kaifeng can most effectively help the construction of national central city in Zhengzhou and continue to lead the province's regional integration development practices; it is conducive to breaking the constraints of administrative divisions on development, and planning regional development frameworks and developments on a larger scale and in broader perspective. It is conducive to accelerating the construction of the Zhengzhou metropolitan area, improving the overall energy level and efficiency of the regional economy; it is conducive to enhancing the well-being and sense of happiness of the people of the two places, and achieving symbiosis, sharing and common prosperity. Kaifeng earnestly implements the internship of General Secretary Jinping Yin Yin, focusing on the planning and construction of the first demonstration zone of Zhengkai's urbanization, transportation interconnection, ecological co-governance and sharing, industry co-construction, public service recognition and sharing, and overall planning of ecological protection and high-quality development in the Yellow River Basin, protection and repair of the ancient city of Song Dynasty. Kaifeng vigorously promotes the co-urbanization of Zhengzhou and Kaifeng, strives for the leading position in the rise of the central region, and strives to write a more brilliant chapter in Kaifeng in the Central Plains. Zhengkai Co-urbanization has unprecedented development opportunities and optimal investment environment, and we look forward to common development with people who have lofty ideals!





郑州航空港经济综合实验区

ZHENGZHOU AIRPORT ECONOMIC COMPREHENSIVE EXPERIMENTAL ZONE

郑州航空港经济综合实验区包括郑州航空港、综合保税区和周边产业园区，规划范围包含了开封部分区域，面积415平方公里。其中，开封尉氏县65平方公里纳入其中，开封城乡一体化示范区和朱仙镇区域与航空港经济综合实验区积极对接。未来，河南省将把郑州航空港经济综合实验区打造成为中原经济区发展的核心增长极和国家内陆开放高地。相信在不久的将来，实验区将会成为一个宜居、生态、绿色、环保等为一体的“新都市”。从历史发展的规律来看，交通运输始终是人类文明的生命线、是社会经济活动的纽带，影响着区域城市的兴衰。历史上，内河水运的发展，改变了城市和产业的布局；海运的发展，推动了沿海城市的崛起；铁路交通的兴起，促进了内陆城镇的迅速成长；高速公路的发展，加快了沿边城市的扩张。现今，航空运输正在成为全球化发展中带动区域发展的新引擎。

2013年3月7日，国务院批复实施了《郑州航空港经济综合实验区发展规划》，至此，郑州航空港经济综合实验区上升成为国家战略，成为中国首个航空港经济发展先行区。作为中原经济区核心增长级，郑州航空港经济综合实验区是以河南省郑州市新郑国际机场附近的新郑综合保税区为核心的航空经济体和航空都市区，是朝着国际航空物流中心、国际化陆港城市、国际性的综合物流区、高端制造业基地和服务业基地为方向发展的主要载体。在相关政策的支持下，郑州航空港经济综合实验区将会成为中原经济区的龙头。

ZHENGZHOU AIRPORT ECONOMIC COMPREHENSIVE EXPERIMENTAL ZONE

Zhengzhou Airport Economic Comprehensive Experimental Zone includes Zhengzhou Airport, Comprehensive Bonded Zone and surrounding industrial parks. The planning scope includes part of Kaifeng, covering an area of 415 square kilometers. Among them, 65 square kilometers of Weishi County in Kaifeng is included, and the Kaifeng Urban-rural Integration Demonstration Zone and Zhuxian Town Area are actively connected with it. In the future, Henan Province will build the Zhengzhou Airport Economic Comprehensive Experimental Zone into the core growth pole for the development of the Central Plains Economic Zone and the country's inland open highland. It is believed that in the near future, the experimental area will become a "new city" that is livable, ecological, green, and environmentally friendly. Judging from the law of historical development, transportation has always been the lifeline of human civilization and the link of social and economic activities, affecting the rise and fall of regional cities. Historically, the development of inland water transport has changed the layout of cities and industries; the development of shipping has promoted the rise of coastal cities; the rise of railway transportation has promoted the rapid growth of inland towns; the development of expressways has accelerated the expansion of border cities. Nowadays, air transportation is becoming a new engine driving regional development in the development of globalization.

On March 7, 2013, the State Council approved the implementation of the "Development Plan for Zhengzhou Airport Economic Comprehensive Experimental Zone". So far, Zhengzhou Airport Economic Comprehensive Experimental Zone has risen to a national strategy and became China's first airport economic development pilot zone. As the core growth level of the Central Plains Economic Zone, Zhengzhou Airport Economic Comprehensive Experimental Zone is an aviation economy and metropolitan area with the Xingzheng Comprehensive Bonded Area near Xingzheng International Airport in Zhengzhou City, Henan Province as its core. It is a main carrier for developing a international aviation logistics center, international land-port city, international integrated logistics area, high-end manufacturing base and service industry base. With the support of relevant policies, Zhengzhou Airport Economic Comprehensive Experimental Zone will become the leader of the Central Plains Economic Zone.



中国（河南）自由贸易试验区开封片区

KAIFENG AREA OF CHINA (HENAN) PILOT FREE TRADE ZONE

中国（河南）自由贸易试验区开封片区于2017年4月1日正式挂牌启动，实施范围20平方公里，位于开封城区西部，毗邻郑州，处于郑开同城核心区域。

一、功能定位

国家赋予开封片区的功能定位为：重点发展服务外包、医疗旅游、创意设计、文化传媒、文化金融、艺术品交易、现代物流等服务业，提升装备制造、农副产品深加工国际合作及贸易能力，构建国际文化贸易和人文旅游合作平台，打造服务贸易创新发展区和文创产业对外开放先行区，促进国际文化旅游融合发展。

二、产业规划

根据产业发展方向，开封片区在空间上规划为“一心四谷两港”，即：中央商务中心、文创艺谷、健康乐谷、高新智造谷、创智孵化谷、国际物流港和国际商务信息港，七个功能分区形成互为依托、有机融合、富有创意的产业空间体系。产业布局上开封片区将着力打造“234”产业集群体系，“2”即以文创产业和医疗旅游两大特色产业为亮点，“3”即以高端装备及汽车零部件、新兴制造业、农产品及食品加工三大制造业为支柱，“4”即以服务外包、现代物流、金融服务、专业服务四大现代服务业为主导。

在特色产业培育方面深耕细作，去年成功入选第二批国家文化出口基地，实现了河南省特色服务出口基地零的突破；开封片区迪拜国际艺术品展示交易中心入选商务部等6部门组织实施的对外文化贸易“千帆出海”行动计划；在北京服贸会国家文化出口基地论坛上，开封片区探索的“构建艺术品进出口贸易全链条服务体系”案例，入选《国家文化出口基地第二批创新实践案例》。

三、营商环境

开封片区围绕打造“营商环境国际化引领区”，聚焦投资、贸易便利化、事中事后监管等领域累计探索150项改革创新经验，形成与国际投资贸易通行规则相衔接的制度创新体系，全力实现“极简”审批、“极速”效率、“极优”服务、“极严”约束。截至目前，开封片区累计驻企业近7000家，是挂牌前的39倍，现已入驻益海嘉里、丰树物流、桃李面包、韵达等70余家500强企业、上市公司及行业领军企业。

下一步，开封片区将进一步强化创新意识，以啃硬骨头、打攻坚战的决心和毅力继续推进制度型开放，以制度创新推动实现内国际相关规则 and 标准顺畅衔接，围绕文化、医疗等现代服务业和特色优势产业，大力提升产业链上下游的合作及联动，增强区域发展的辐射带动能力，打造内陆开放创新、产业特色鲜明的自贸试验区。

The Kaifeng Area of China (Henan) Pilot Free Trade Zone was officially launched on April 1, 2017, covering an area of 20 square kilometers. It is located in the west of Kaifeng urban area, adjacent to Zhengzhou, and in the core area of Zhengzhou Kaifeng.

I Functions

It focuses on the development of service outsourcing, medical tourism, creative design, cultural media, cultural finance, art trading, modern logistics and other service industries, improve equipment manufacturing, agricultural and sideline product processing international cooperation and trade capabilities, and builds a platform for international cultural trade and cultural tourism cooperation. It also creates a service trade innovation development zone and a pioneering zone for the opening of cultural and creative industries to promote the integrated development of international cultural tourism.

II Industry Planning

It is planned as a functional space of “One Heart, Four Valleys and Two Ports”. “One Heart” means the central business center, “Four Valleys” are Health Happiness Valley, Cultural and Creative Arts Valley, Innovation and Intelligence Incubation Valley, High-tech and Intelligent Valley, and “Two Ports” are international logistics port, International business information port. It put efforts to build a “234” industrial cluster system. “2” means cultural industry and medical tourism, “3” means high-end equipment and auto parts, strategic emerging manufacturing, agricultural and sideline product processing industry, and “4” means modern logistics and service outsourcing, financial services, professional services.

In terms of the cultivation of characteristic industries, the Kaifeng area of China (Henan) Pilot Free Trade Zone was successfully selected into the second batch of national cultural export bases last year, achieving a breakthrough in Henan Province; The Dubai International Art Exhibition and Trading Center in Kaifeng District was selected into the “Thousand Sails to the Sea” action plan for foreign cultural trade organized and implemented by six departments, including the Ministry of Commerce; At the National Cultural Export Base Forum of Beijing International Trade in Services, the case of “building a whole chain service system of art import and export trade” explored by Kaifeng District was selected into the Second Batch of Innovative Practice Cases of National Cultural Export Base.

III Business environment

Focusing on building a “leading area for the internationalization of business environment”, Kaifeng District has explored 150 reform and innovation experiences in investment, trade facilitation, in-process and post event supervision and other fields, formed an institutional innovation system that is consistent with the prevailing rules of international investment and trade, and made every effort to achieve “minimalist” approval, “fast” efficiency, “excellent” service, and “strict” constraints. Up to now, there are nearly 7000 enterprises stationed in Kaifeng District, 39 times the number before listing. Now, more than 70 top 500 enterprises, listed companies and industry leaders have settled in Yihai Kerry, Fengshu Logistics, Taoli Bread, Yunda Express, etc.

Next, the Kaifeng District will adhere to innovation, continue to promote institutional opening, and promote the convergence of relevant domestic and international rules and standards through institutional innovation. Kaifeng District focuses on modern service industries such as culture and medical care and distinctive industries, vigorously promotes the cooperation and linkage between upstream and downstream of the industrial chain, enhances the radiation and driving capacity of regional development, and creates a pilot free trade zone with inland opening and innovation and distinctive industrial characteristics.



图例

生态廊道 城市绿带 中心城绿带
黄河绿带 黄河绿带 黄河绿带



开封综合保税区

INTRODUCTION TO KAIFENG COMPREHENSIVE BONDED ZONE

开封综合保税区（以下简称“开封综保区”）于2020年12月17日获国务院批复设立，规划选址位于开封市城乡一体化示范区、国家级开封经济技术开发区、中国（河南）自由贸易试验区开封片区核心地带，规划面积1.78平方公里，分为东、西两个区块。区块一规划面积1.22平方公里；区块二规划面积0.56平方公里。

开封综保区作为开封市对外开放的新高地，经济高质量发展的新引擎，主要以保税加工功能为主，以保税物流功能为支撑，以保税服务功能为配套，并拓展跨境电商等创新服务功能，突出综保区产业集聚和开放引领功能，积极引进一批辐射带动强、产业关联度高、技术先进的产业项目，着力打造“文化艺术品展示交易、保税研发设计”两中心以及“汽车及零部件外贸产业、高端电子产品制造、农副产品加工、电子商务产业”四基地。

开封综保区自启动建设以来，坚持高起点规划、高标准建设、高效率推进，目前基础和监管设施均已建设完成，已具备正式封关验收条件。区内奇瑞KD出口基地顺利达产，中部地区首家汽车散件出口项目建成。围绕区港合作，助推“开瑞国际号”出口非洲“海公铁”联运首列成功启航，开启了开封综合保税区出口海外产品“一单到底”全程物流新模式。依托开封综合保税区，联合山东港口陆海联运集团、中铁联集郑州中心站等单位，探索国际物流“公铁海”“一单到底”，助推自贸区外向型企业降本增效。为25家企业提供外综服业务，总货值约6660万美元、总货量约474.89万吨，为其获取运费补贴约53万元人民币，贸易补贴约360万元人民币，并实现了40多万元的公司盈利。围绕供应链金融，圆满完成首次LC国际信用证代理进口业务，对促进我市外贸转型升级具有积极意义。

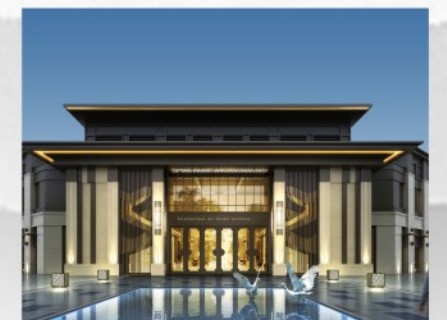
下一步，开封综保区将严格按照海关总署相关建设、封关验收相关标准和要求，高质量完成围网、卡口、海关查验库、检疫用房等基础和监管设施建设，确保顺利通过国家验收，尽早正式封关运营，发挥平台作用；同时，将深度融入黄河流域生态保护和高质量发展、郑开同城化发展等国家战略，充分发挥自贸试验区和综合保税区功能叠加优势，着力打造河南省对外开放产业发展聚集地、郑州大都市区物流枢纽的东部支撑、开封高质量发展的新引擎。

Kaifeng Comprehensive Bonded Zone was approved by the State Council to be established on December 17, 2020. It is planned to be located in the core area of Kaifeng District, Kaifeng Urban Rural Integration Demonstration Zone, Kaifeng National Economic and Technological Development Zone, and China (Henan) Pilot Free Trade Zone, with a planned area of 1.78 square kilometers, divided into east and west blocks. Block I has a planned area of 1.22 square kilometers; Block II has a planned area of 0.56 square kilometers.

As a new engine for Kaifeng's opening up and high-quality economic development, Kaifeng Comprehensive Bonded Zone is mainly characterized by bonded processing function, bonded logistics function and bonded service function. In addition, Kaifeng Comprehensive Bonded Zone has expanded its innovative service functions such as cross-border e-commerce, highlighted the industrial agglomeration and opening leading functions of the Comprehensive Bonded Zone, and actively introduced a number of industrial projects with strong radiation and drive, high industrial relevance and advanced technology. The bonded zone focuses on building two centers of cultural art exhibition and trade and bonded R&D design, and establishes a foreign trade industrial base for automobiles and parts, a high-end electronic product manufacturing base, a agricultural and sideline product processing base, and an e-commerce industrial base.

Since the start of the construction of Kaifeng Comprehensive Bonded Zone, it has adhered to the high starting point planning, high standard construction, and efficient promotion. At present, the infrastructure and regulatory facilities have been completed, and the conditions for formal customs clearance acceptance have been met. Chery KD export base in the region reached production capacity smoothly, and the first auto bulk parts export project in the central region was completed. Relying on the Kaifeng Comprehensive Bonded Zone, Shandong Port Land and Sea Intermodal Transport Group, China Railway Union Zhengzhou Central Station and other units, explore the international logistics "road, rail and sea" and "one order to the end", and boost the cost reduction and efficiency increase of export-oriented enterprises in the Free Trade Zone. The Bonded Zone provides 25 enterprises with integrated foreign service business, with a total value of about 66.6 million US dollars and a total volume of about 4.7489 million tons. It has obtained freight subsidies of about 530000 yuan and trade subsidies of about 3.6 million yuan for them, and achieved corporate profits of more than 400000 yuan. Focusing on supply chain finance, the completion of the first LC international letter of credit agency import business is of positive significance for promoting the transformation and upgrading of our foreign trade.

Next, Kaifeng Comprehensive Bonded Area will complete the construction of infrastructure and supervision facilities such as fence, bayonet, customs inspection warehouse and quarantine house in high quality in strict accordance with the relevant standards and requirements of the General Administration of Customs for construction and customs closure acceptance, so as to ensure the smooth passing of national acceptance, official customs closure and operation as soon as possible, and play the role of a platform; At the same time, we will deeply integrate the ecological protection and high-quality development of the Yellow River basin, the development of Zhengzhou Kaifeng in the same city and other national strategies, give full play to the overlapping advantages of the functions of the pilot free trade zone and the comprehensive bonded area, and strive to create a cluster of open industry development in Henan Province, the eastern support of the logistics hub in Zhengzhou metropolitan area, and a new engine for high-quality development in Kaifeng.



开封市产城融合示范区

INTRODUCTION TO KAIFENG CITY INDUSTRY INTEGRATION DEMONSTRATION ZONE

开封市产城融合示范区位于开封市西南片区，以开港大道为轴线，以郑民高速、祥港大道、龙中公路、安罗高速、新密快速通道为外联交通骨架网，直接接轨河南省米字型高铁网和主要快速干线，30分钟可到达郑州国际机场、郑州高铁南站，45分钟可到达省委省政府、郑州高铁东站，区位优势十分明显。

开封市委、市政府根据《国家发改委关于支持各地开展产城融合示范区建设的通知》，谋划设置了开封市产城融合示范区，自2021年7月份正式开展各项工作，开封市产城融合示范区以现代职业教育为抓手，以“产城教融合、园城校共享”为规划理念，着力引进优质、实力雄厚的科研院所、高职院校，集聚人气，构建“产、学、研、用、城”一体的产业功能体系，积极承接郑州大都市圈高教科研、先进制造业等重要功能转移，推进职业教育现代化，培养更多高技能人才，为区域经济提供智力支持和人才支撑，服务于郑州大都市圈，差异化发展配套服务和相关产业。

开封市委、市政府根据《国家发改委关于支持各地开展产城融合示范区建设的通知》，谋划设置了开封市产城融合示范区，自2021年7月份正式开展各项工作，开封市产城融合示范区以现代职业教育为抓手，以“产城教融合、园城校共享”为规划理念，着力引进优质、实力雄厚的科研院所、高职院校，集聚人气，构建“产、学、研、用、城”一体的产业功能体系，积极承接郑州大都市圈高教科研、先进制造业等重要功能转移，推进职业教育现代化，培养更多高技能人才，为区域经济提供智力支持和人才支撑，服务于郑州大都市圈，差异化发展配套服务和相关产业。

产融区抢抓中部地区崛起、黄河流域生态保护和高质量发展、大运河国家文化公园建设、郑开同城化等重大战略叠加机遇，主动融入新发展格局、立足新发展阶段、贯彻新发展理念，按照国家关于深化产教融合文件精神，加快建设实训基地、技术创新中心、孵化器等示范园区，推动形成多个科技创新生态圈，加速高端科创资源特别是与郑州大都市圈主要产业相配套的科技研发机构在产融区聚集，培养高素质技术技能人才。已落地开工郑州电力职业技术学院、黄河水利职业技术学院、开封智慧健康职业学院、郑州财贸专修学院等4所高等职业院校。围绕高端制造和电子信息产业方向 谋划了“专精特新产业园”和“智慧双创园”项目。



Kaifeng City Industry Integration Demonstration Zone is located in the southwest area of Kaifeng City. It takes Kaigang Avenue as the axis, and Zhengzhou-Minquan Expressway, Xianggang Avenue, Longzhong Highway, Anyang-Luoshan Expressway, and Xinmi Expressway as the external transportation skeleton network. It directly connects with Henan Province's 米-shaped high-speed rail network and main high-speed trunk lines. It can reach Zhengzhou International Airport and Zhengzhou High speed Railway South Station in 30 minutes, and reach the CPC Henan Province Committee and the People's government of Henan Province and Zhengzhou High speed Railway East Station in 45 minutes. The location advantage is very obvious.

According to the Notice of the National Development and Reform Commission on Supporting Local Construction of Industry City Integration Demonstration Zones, the Kaifeng Municipal Party Committee and the Kaifeng Municipal Government planned to set up the Kaifeng City Industry Integration Demonstration Zone. Since July 2021, various work has been officially carried out. The Kaifeng City Industry Integration Demonstration Zone focuses on modern vocational education and strives to introduce high-quality and powerful scientific research institutes and higher vocational colleges, and then build an industrial functional system integrating "production, learning, research, use and city". In addition, the demonstration zone actively undertakes the transfer of important functions such as higher education, scientific research and advanced manufacturing in Zhengzhou metropolitan area, promotes the modernization of vocational education, and trains more highly skilled talents. At the same time, it will provide intellectual support and talent support for regional economy, serve Zhengzhou Metropolitan Area, and develop supporting services and related industries in a differentiated way.

The demonstration zone seizes such major strategic opportunities as the rise of the central region, the ecological protection and high-quality development of the Yellow River basin, the construction of the Grand Canal National Cultural Park, and the integration of Zhengzhou and Kaifeng, actively integrates into the new development pattern, and implements the new development concept. In accordance with the spirit of national documents on deepening the integration of industry and education, the demonstration zone accelerates the construction of demonstration parks such as training bases, technology innovation centers, incubators, and promotes the formation of multiple scientific and technological innovation ecosystems. The demonstration zone accelerates the gathering of high-end scientific and technological innovation resources, especially the scientific and technological research and development institutions supporting the main industries of Zhengzhou metropolitan area in the industrial and financial zone, to cultivate high-quality technical and skilled talents.

产融区拥有“七纵七横”的交通体系：

- 3条铁路线——郑徐高铁、陇海铁路、郑开城际南线（规划）；
- 6条高速公路——连霍高速、郑民高速、安罗高速、商登高速、南兰高速、大广高速；
- 2条国道——国道310南移线（规划）、开港大道；
- 1条省道——开尉公路；
- 1条快速路——机场至新密快速路；
- 1条公路——龙中公路。

产融区的规划定位与发展目标：

1.发展目标

- 产教融合的活力之城
- 古今交汇的文化之城
- 开放共享的智慧之城

2.规划定位

- 全国产城教研融中部地区新兴产业发展的服务基地
- 共享的城市样板
- 郑开同城化高质量发展的重要一极

产融区用地规划分期

三个范围：前瞻30年、编细15年、做实近5年。

2025年

17平方公里。已完成控制性详细规划、城市设计初步方案

2035年

58平方公里。已完成用地初步方案

2050年

88平方公里。已确定全域空间格局



The Industry Integration Demonstration Zone has a "seven vertical and seven horizontal" transportation system:

- 3 railway lines - Zhengzhou-Xuzhou High-speed Railway, Lanzhou-Lianyungang Railway, Zhengzhou-Kaifeng Intercity South Line (planned);
- 6 expressways - Lianyungang-Khorgos Expressway, Zhengzhou-Minquan Expressway, Anyang-Luoshan Expressway, Shangqiu-Dengfeng Expressway, Lankao-Nanyang Express and Daqing-Guangzhou Expressway;
- Two national highways - National Highway 310 southbound (planned), Kaigang Avenue;
- One provincial highway Kaiwei Highway;
- One expressway -- Zhengzhou Xinzheng International Airport to Xinmi Expressway;
- One highway -- Longzhong Highway.

Planning orientation and development goals:

1. Development objectives

- A city of vitality integrating industry and education
- A city of ancient and modern cultures
- An open and shared city of wisdom

2. Planning and positioning

- Emerging industries in central China integrating industry, city, education and research
- A Developed service base and shared city model
- An important part of the high-quality development of Zhengkai's urbanization

Staging of land use planning

Three areas: 30 years of foresight, 15 years of elaboration and nearly 5 years of implementation.

2025

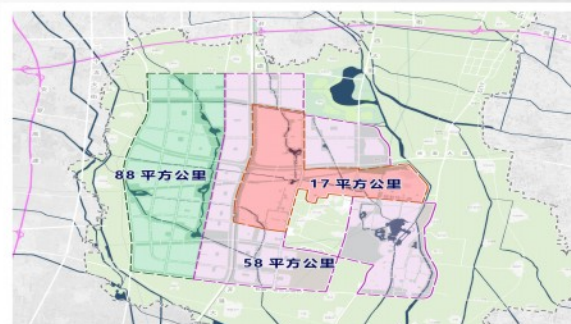
17 square kilometers. The regulatory detailed planning and preliminary urban design scheme have been completed.

2035

58 square kilometers. The preliminary land use plan has been completed.

2050

88 square kilometers. The spatial pattern of the whole region has been determined.





产融区规划理念

四园同构

将校园、产业园、家园、公园在功能组织、空间塑造上，实现全面融合，激活城市活力。

多维共享

落实校校、校城、校产共享理念，塑造不同模式的共享场景，实现共享模式创新。

启动区规划设计结构

蓝绿创享T轴，打造T字型创享走廊，依托水系、绿地，融入共享服务功能。三级聚芯引领，构建“1+3+2”三级共享中心体系：1个一级共享中心，3个二级共享中心，2个三级共享中心、六大单元共生、六大复合、功能完善的可生长共享单元，配合建设分期单元化推进实施。

启动区规划设计策略

共享中心：构建“1+3+2”三级共享中心体系。

一级共享中心——城市级

主要布局：城市公园、城市行政服务、文体设施、产业孵化、实训中心、综合商业、人才服务、共享办公、大师工作室、人才公寓等。

二级共享中心——组团级

主要布局：商业服务、教育服务、体育设施、便利店、生活服务、共享小游园。

三级共享中心——社区级

主要布局：商业服务、生活服务、共享小游园等。

构建“1+2+3”产业发展格局

1是指把握“数字经济”演进规律。做大做强1个首位产业。即以电子功能材料与元器件为核心的电子信息制造业，迈向集群化。

2是指抢抓“双碳经济”与“健康经济”发展新机遇。培育发展2个新兴产业。动力电池产业、医疗器械及健康服务产业，推动规模化。

3是指服务制造业转型升级需求。加快发展3大科技服务产业。即工业设计、人力资源、检测认证，促进融合化。



Planning concept

Integration of four parks

The campus, industrial park, home and park will be fully integrated in terms of functional organization and space shaping to activate the vitality of the city.

Multidimensional sharing

Implement the sharing concept of schools, school-city and school-property, create sharing scenes of different modes, and realize innovation of sharing mode.

Planning and design structure of the start-up area

Build a T-shaped innovation and enjoyment corridor, relying on water system and green space, and integrate into the sharing service function. Build a "1+3+2" three-level sharing center system: one primary sharing center, three secondary sharing centers, two three-level sharing centers, six symbiotic units, six composite and fully functional growing sharing units, and coordinate with the construction of phased units to promote implementation.

Planning and design strategy of the start-up area

Sharing center: build a "1+3+2" three-level sharing center system.

First level sharing center - city level

Main layout: urban parks, urban administrative services, cultural and sports facilities, industrial incubation, training centers, comprehensive commerce, talent services, shared office, master studios, talent apartments, etc.

Secondary sharing center - group level

Main layout: commercial services, education services, sports facilities, convenience stores, life services, shared small parks.

Three level sharing center - community level

Main layout: business services, life services, shared small parks, etc.

Build "1+2+3" industrial development pattern

1 refers to grasping the evolution law of "digital economy". Make one of the first industries bigger and stronger. That is to say, the electronic information manufacturing industry with electronic functional materials and components as its core is moving towards clustering.

2 refers to seizing new opportunities for the development of "dual carbon economy" and "healthy economy". Cultivate and develop two emerging industries. Develop power battery industry, medical equipment and health service industry on a large scale.

3 refers to the transformation and upgrading needs of the service manufacturing industry. Accelerate the development of three major science and technology service industries, and promote the integration of industrial design, human resources, testing and certification.



Kaifeng State owned Assets Investment and Management Group Co., Ltd. (hereinafter referred to as "SDIC Group") was established on May 18, 2012, mainly engaged in the collection and disposal of assets and the revitalization of idle assets. In September 2018, Kaifeng Municipal People's Government carried out a strategic reorganization of Kaifeng State Investment. After the reorganization, Kaifeng State Investment was a wholly state-owned company led by the municipal people's government, which was the main body of state-owned capital investment and operation authorized by the municipal people's government. Kaifeng Municipal Finance Bureau performed the role of investor, and has the qualification of an independent market legal person that operates in accordance with the modern enterprise system, operates independently, and is responsible for its own profits and losses. By the end of December 2021, the total assets of SDIC Group had reached 55.6 billion yuan, total liabilities 23.6 billion yuan, asset liability ratio 42.38%, operating income 5.114 billion yuan, net profit 336 million yuan, and the main credit rating of the group company was "AA+".

Focusing on the needs of regional economic development in Kaifeng City and centering on the direction of "industrial investment+capital operation", SDIC Group has built a diversified business system of asset management, industrial investment, capital operation, etc., strengthened its investment management ability, achieved orderly progress of state-owned capital, maintained and increased its value, and driven regional industrial development. SDIC Group has established a business system with industrial investment as the core business and urban operation and financial services as the strategic support, built a 3+3 industrial system, achieved high-quality development of manufacturing, agriculture and health industries, and expanded and cultivated the construction, smart city and similar financial sectors. Through the extension of the vertical industrial chain, taking investment as the entry point, and adopting various ways such as commercial investment and equity cooperation, we will create a closed loop of the whole industrial chain and improve the comprehensive rate of return. We build a dual wheel driven development model of asset operation and industrial investment to form an industrial investment cluster.



市属资本运营公司

MUNICIPAL CAPITAL OPERATION COMPANY

开封国有资产投资经营集团有限公司（以下简称国投集团）成立于2012年5月18日，主要从事资产包清收、处置，盘活闲置资产等工作。2018年9月，开封市人民政府对开封国投进行了战略重组，重组后的开封国投为市人民政府领导的国有独资公司，是经市人民政府授权的国有资本投资运营主体，开封市财政局履行出资人职责，具有按照现代企业制度规范运作，自主经营，自负盈亏的独立市场法人资格。截至2021年12月底，国投集团资产总额达到556亿元，负债总额236亿元，资产负债率42.38%，实现营业收入51.14亿元，净利润3.36亿元，集团公司主体信用等级为“AA+”。

国投集团以开封市区域经济发展需要为核心，围绕“产业投资+资本运营”方向，构建资产经营、产业投资、资本运作等多元化业务体系，增强投资管理能力，实现国有资本有序进度和保值增值，带动区域产业发展。树立以产业投资为核心主业、以城市运营和金融服务为战略支撑的业务体系，打造3+3的产业体系，实现制造业、农业、大健康产业的高质量发展，做大和培育建筑、智慧城市、类金融业务板块。通过纵向产业链延伸，以投资为切入口，采用商业化投资、股权合作等多种方式，打造全产业链闭环，提高综合收益率。构建资产运营加产业投资双轮驱动的发展模式，形成产业投资集群。

市属资本运营公司

主要围绕全市重点项目和重大工程，创新投资模式，多渠道引入社会资本，构建新的投融资体系。一是围绕市委市政府战略部署，集团公司统一思想，以三个“明确”聚焦主责主业，围绕我市“制造立市”战略，以高端制造业为首要产业，具体以东大化工、开封碳素等企业为突破点，深耕细作，布局资金，支持产业链延伸。二是按照市委市政府对东部片区、东南片区规划，打造“千亿”产业园目标，采取“管委会+公司”模式，与央企、省企、地方国有企业等强强联合，充分发挥各自优势，实现共赢。三是围绕乡村振兴重大战略，大力发展农业农村（乡村振兴）板块，提升沿黄流域乡村振兴产业，以各县区平台公司为载体，整合县区资源，切实做精做实我市特色农业。四是围绕我市民生发展，构建医疗大健康战略，以中心医院、富艺医院、民生养老院项目为抓手，带动我市医疗资源。五是采用基金投资、股权合作等多种方式，打造产业链闭环，提高综合收益，形成产业投资集群，扶持、孵化开封市重点企业上市。

It mainly focuses on the city's key projects and major projects, innovates the investment model, introduces social capital through multiple channels, and constructs a new investment and financing system. First, around the strategic deployment of the municipal party committee and the municipal government, the group company unified its thinking, focused on the main responsibility and main business with three "clear" strategies, focused on the city's "manufacturing" strategy, took high-end manufacturing industry as the primary industry, and specifically took Dongda Chemical, Kaifeng Carbon and other enterprises as breakthrough points to support the extension of the industry chain. Second, in accordance with the planning of the municipal party committee and the municipal government for the eastern area and the southeast area, the "management committee+company" model was adopted to unite with central enterprises, provincial enterprises and local state-owned enterprises to achieve win-win results. The third is to focus on the major strategy of rural revitalization, vigorously develop the agricultural and rural (rural revitalization) sector, promote the rural revitalization industry along the Yellow River basin, integrate the resources of counties and districts with the platform companies of counties and districts as the carrier, and develop the characteristic agriculture of our city. The fourth is to focus on the needs of the people's livelihood of our city, build a medical health strategy, and take the central hospital, Fuyi hospital, and people's livelihood nursing home projects as the starting point to drive our medical resources. Fifth, fund investment, equity cooperation and other ways are adopted to create a closed loop of the industrial chain, improve comprehensive income, form an industrial investment cluster, and support and incubate key enterprises in Kaifeng to go public.



开封市发展投资集团有限公司成立于2003年5月，为开封市国有资本投资运营重要骨干企业，注册资本15.00亿元，主营业务涵盖基础设施重点项目建设、片区开发、投资与资产管理等。公司立足城市投资、建设和管理实际，建立以城市基础设施建设为主体，以城市公共资产投资、运营为支撑的业务体系，构建“投、融、建、营”四位一体，实现产融结合，增强自身造血能力，加强风险防控，努力成为资产优良、业绩优秀的国有资本投资运营公司。

2020年4月，经大公国际评级公司评定公司信用等级为AA+评级；截止上半年，公司总资产664亿元、净资产250亿元，产业布局涉及基础设施建设、轨道交通、重点项目、棚改安置房建设、文化旅游、教育医疗、节能环保、产业投资、资本运营管理等多个领域。

Kaifeng Development Investment Group Co., Ltd., established in May 2003, is an important backbone enterprise invested and operated by Kaifeng's state-owned capital, with a registered capital of 1.50 billion yuan. Its main business covers the construction of key infrastructure projects, regional development, investment, and asset management. Based on the actual urban investment, construction and management, the Company has established a business system with urban infrastructure construction as the main body and urban public asset investment and operation as the support, built a system of integrating "investment, financing, construction and operation", realized the combination of industry and finance, enhanced its own hematopoietic capacity, strengthened risk prevention and control, and strived to become a state-owned capital investment and operation company with excellent assets and outstanding performance. In April 2020, Kaifeng Development Investment Group Co., Ltd. was rated AA+ by Dagong International Rating Company; As of the first half of the year, the company had a total assets of 66.4 billion yuan and a net assets of 25 billion yuan. Its industrial layout involves infrastructure construction, rail transit, key projects, shed reconstruction and resettlement housing construction, cultural tourism, education and health care, energy conservation and environmental protection, industrial investment, capital operation and management and other fields.

近年来,公司围绕项目带动、资本运作,外引内联,实现一批优质产业项目落地见效。公司深耕我市充电桩建设运营市场,顺利取得充电桩特许经营权,充电桩市场占有率达95%以上;果断进军城市公共停车场及智慧停车领域,通过智慧手段完善开封市城区的基础配套设施,缓解中心城区停车难的现实问题;为保护、传承、弘扬黄河文化,积极推进黄河悬河文化展示园项目的进度提速,致力于打造开封黄河历史文化主地标和城市精神代表;把交办的重大任务做实,有力推进了开封国际文化交流中心项目;引进外资与全球十大环境服务商及资源再生公司之一的德国欧绿保(香港Dugong IWS HAZ Limited)、省国企平煤集团(河南平煤神马环保节能有限公司)合作,进行工业固废危废处置和资源化利用,填补开封固废处理行业的空白;与上市公司易华录合作,开展大数据应用运营、数据资产运营业务,力争形成开封市数字招商的一块“金名片”。



2022年,发投集团推进重大项目近20余个,总投资约300亿元,圆满完成政府赋予的各项任务,项目建设呈现出稳中提升、进中突破的良好态势。

在片区开发上,公司积极发挥平台作用、服务我市大局,紧抓黄河流域生态保护和高质量发展、郑开同城化等一系列重大战略机遇。以打造黄河文化轴(开柳路全线贯通)为原则,以完成北部片区整体开发为目标,以塑造“北美”名片为宗旨,全力推进开封北部片区环境综合提升项目,努力建成区域功能完善、城乡融合发展、生态良好的北部新城,为北部片区的发展建设贡献力量;积极推进郑开城际铁路交通枢纽系列项目,构建南部城区现代化综合交通体系,推动火车站片区高质量发展与区域功能提升,补齐城市基础设施和公共服务设施短板,推进街区建设和老旧小区改造,助推我市加快融入郑州大都市圈。

发投集团始终将“在把握大势中培育、在服务大局中扶植、在顺势而为中催化”作为发挥国企担当、服务我市大局,坚持在政府安排、项目需要、前瞻发展的直道冲刺中一以贯之,用实际行动践行新时代的历史使命,为稳定开封市经济大盘提供有力支撑。



In recent years, the company has achieved a number of high-quality industrial projects through project driven, capital operation and resources gathering. The company cultivated the construction and operation market of charging piles in our city, successfully obtained the franchise right of charging piles, and the market share of charging piles reached more than 95%; Enter the field of urban public parking and intelligent parking, improve the infrastructure and supporting facilities in the urban area of Kaifeng through intelligent means, and ease the parking difficulties in the central urban area; accelerate the construction progress of the Yellow River Hanging River Culture Exhibition Park Project, and strive to create the main landmark of Kaifeng's Yellow River history and culture and the representative of the city spirit; Earnestly completed the major tasks assigned, and promoted the project of Kaifeng International Cultural Exchange Center; Introduce foreign capital to cooperate with Dugong IWS HAZ Limited (Hong Kong), one of the world's top ten environmental service providers and resource recycling companies, and Pingmei Group (Henan Pingmei Shenma Environmental Protection and Energy Conservation Co., Ltd.), a provincial state-owned enterprise, to carry out the disposal and resource utilization of industrial solid waste and hazardous waste, and fill the gap in Kaifeng's solid waste treatment industry; Cooperate with the listed company Yihualu to carry out big data application operation and data asset operation business, and strive to form a "golden card" for Kaifeng's digital investment attraction.

In 2022, Kaifeng Development Investment Group Co., Ltd. will promote nearly 20 major projects, with a total investment of about 30 billion yuan, and successfully complete various tasks entrusted by the government. The project construction will show a good momentum of steady improvement and breakthrough.

In the area development, the company actively played a platform role, served the overall situation of our city, and seized a series of major strategic opportunities such as ecological protection and high-quality development of the Yellow River basin, and the integration of Zhengzhou and Kaifeng. The company actively builds the Yellow River Cultural Axis (the whole Kailiu Road runs through) and strives to complete the overall development of the northern area of Kaifeng. The company makes every effort to promote the environmental comprehensive improvement project in the northern area of Kaifeng, and strives to build a new northern city with perfect regional functions, integrated urban and rural development and good ecology, contributing to the development and construction of the northern area. The company also actively promotes the Zhengzhou-Kaifeng intercity railway transportation hub series projects, builds a modern comprehensive transportation system in the southern urban area of Kaifeng, promotes the high-quality development and regional function improvement of the railway station area, and supplements the shortcomings of urban infrastructure and public service facilities. In addition, the company also promotes the construction of street blocks and the transformation of old residential areas, helping our city to accelerate its integration into Zhengzhou metropolitan area.

The Development and Investment Group actively plays the role of state-owned enterprises to serve the city's overall situation, obeys the government's arrangements and project needs, fulfills the historical mission of the new era with practical actions, and provides strong support for stabilizing the economic market of Kaifeng.

开封市文化旅游投资集团有限公司成立于2010年6月，注册资本5亿元，是转化文旅特色优势、深化文旅产业深度融合，建设文化旅游强市的关键载体。作为我市规模最大、最具专业实力的文化产业建设、运营和投融资平台，开封市文化旅游投资集团有限公司秉承“创新、引领、匠心、共赢”的企业核心精神，承担着打造开封古城内17.4平方公里的宋都人文生活体验区的重任，助推宋都古城复兴。

在开封市委、市政府的正确领导下，开封文投集团坚持有利于国有资产保值增值、有利于提高国有经济竞争力、有利于放大国有资本功能的“三个有利于”方针稳定发展。截至目前，文投集团总资产达到410亿元，下设“城市经营、文化旅游、金融服务、产权研发”四大业务板块，积极探索以金融服务建设、建设服务旅游，最终实现以经营为核心的运作模式。着力实施历史文化资源资本化、产业化，不断将企业改革发展推向深入，围绕文旅产业发展走出了一条特色鲜明的发展之路，力争在未来3—5年内打造河南省国有文化旅游领域第一家上市公司。目前文投集团拥有二级全资子公司14家，三级全资子公司20家，四级全资子公司2家；参股企业共43家。

经过10年的发展，文投集团现已发展成为组织架构完整、产业门类齐备、管理科学高效、团队富有朝气的现代化企业集团。开发运营着一厅（开封文化客厅）一河（大宋御河）一桥（州桥及汴河遗址展示馆）一园（宋都文化园）一国宝（开封城墙景区）三片区（双龙巷历史文化街区、宋都皇城旅游度假区、大相国寺片区）五酒店（一桐酒店、汴京饭店研学基地、双龙巷别院、龙禧亲子酒店）等10余个一系列重大文化旅游项目，为开封市文化产业的繁荣发展和开封市打造国际文化旅游名城做出了积极贡献。文投集团作为专业的文化旅游产业项目投融资平台，充分利用文化产业、棚户区改造、城市双修等优惠政策，坚持以“宋文化”为核心品牌，围绕宋文化内涵，采用市场化手段，实施各类文化产业项目，实现土地一级整理、二级开发建设、三级文化内容营造和运营的联动；参股金融、共享办公、体育场馆开发运营、动漫等领域，实现了产业经营和资本运营的良好互动。



开封火车站站前综合交通枢纽鸟瞰图

市属资本运营公司



Kaifeng Cultural Tourism Investment Group Co., Ltd., founded in June 2010 with a registered capital of 500 million yuan, is a key carrier to transform cultural tourism characteristics, deepen the integration of cultural tourism industry, and build a strong city of cultural tourism. As the largest and most professional cultural industry construction, operation, investment and financing platform in our city, Kaifeng Cultural Tourism Investment Group Co., Ltd., adhering to the core spirit of "innovation, guidance, ingenuity, and win-win", undertakes the task of building a 17.4 square mile cultural life experience area in the ancient city of Kaifeng, and promotes the revival of the ancient city of Song.

Under the correct leadership of the Kaifeng Municipal Party Committee and the Kaifeng Municipal Government, Kaifeng Cultural Tourism Investment Group adheres to the "three benefits" policy of maintaining and increasing the value of state-owned assets, improving the competitiveness of the state-owned economy, and enlarging the functions of state-owned capital. Up to now, the Group has a total assets of 41 billion yuan, with four business segments of "urban operation, cultural tourism, financial services, and property rights research and development". It actively explores the construction of financial services and construction of tourism services, and finally realizes the operation mode with operation as the core. The Group strives to capitalize and industrialize historical and cultural resources, constantly push forward the reform and development of the enterprise, and blaze a distinctive development path around the development of cultural tourism industry, striving to become the first listed company in the field of state-owned cultural tourism in Henan Province in the next 3-5 years. At present, the Cultural Investment Group has 14 Level II wholly-owned subsidiaries, 20 Level III wholly-owned subsidiaries and 2 Level IV wholly-owned subsidiaries; There are 43 joint stock enterprises.

After 10 years of development, the Group has now developed into a modern enterprise group with complete organizational structure, complete industrial categories, scientific and efficient management and vibrant team. It has developed and operated more than 10 major cultural tourism projects, including Kaifeng Cultural Living Room, Grand Song Yu River, Zhouqiao and Bianhe River Relics Exhibition Hall, Songdu Cultural Park, Kaifeng City Wall Scenic Area, Shuanglong Lane Historical and Cultural Block, Songdu Imperial City Tourist Resort, Daxiangguo Temple Area, Yitong Hotel, Bianjing Hotel Research Base, Shuanglong Lane Bieyuan, Longxi parent-child Hotel, etc. It has made positive contributions to the prosperity and development of Kaifeng's cultural industry and the building of Kaifeng into an international cultural tourism city. As a professional investment and financing platform for cultural tourism projects, the Group makes full use of preferential policies such as cultural industry, shantytown reconstruction, and urban double repair. The Group adheres to the core brand of "Song Culture", focuses on the connotation of Song culture, adopts market-oriented means, implements various cultural industry projects, and realizes the linkage of land primary consolidation, secondary development and construction, and tertiary cultural content creation and operation. In addition, the Group also participated in the fields of equity finance, shared office, sports venue development and operation, animation, etc., realizing a good interaction between industrial operation and capital operation.

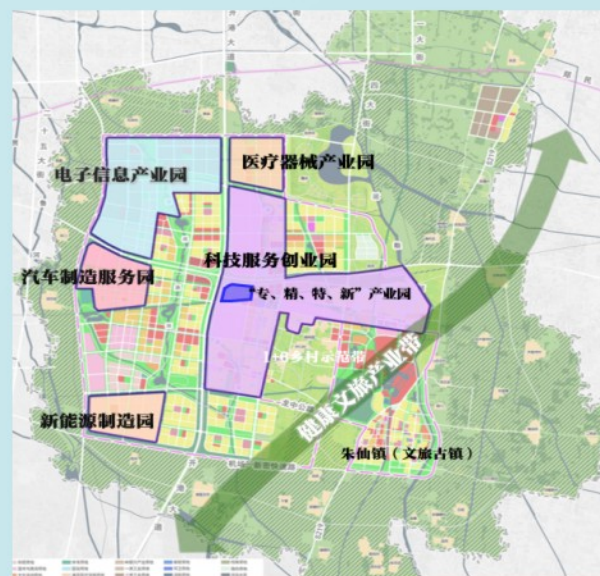


按照《宋都古城保护与修缮规划》的要求，围绕“四厢二十坊推进”，重塑一个“全域保护、全域规划、全域管理、全域经营、全域旅游”——“五个全域”于一体的全域景区的整体部署，采用“留、改、拆、建”的方式开展开封古城城市更新工作。主要项目：阳光湖更新改造、开封城墙贯通及环境整治工程、铁塔景区环境提升工程、开封市宋都古城龙亭片区城市更新项目、梦开封博物馆群落、儒家文化交流中心、珠玑巷游客综合服务中心、双龙巷历史文化街区保护修缮、汴京饭店研学基地、大运河（开封段）文化保护传承利用项目、州桥遗址博物馆项目、大相国寺市场改造提升、夷门新洲项目、朱仙镇国家生态文化示范旅游区、开封智慧健康职业学院、文投智慧城、环城水系建设、“城墙、万岁山、粮食五库联合打造5A景区”项目等，总投资约600亿元。

集团公司拥有得天独厚的历史文化资源、旅游资源，科学规范的现代化企业管理运营模式，高水平高效率的经营管理团队，是开封市文化旅游招商引资的重要平台，享有国家和市政府最优的和最好的营商环境，形成开封文投集团独一无二的企业优势。集团享受开封市招商引资的所有优惠政策；和文化旅游投资集团合作、合资的项目可以享受一事一策。合作方式灵活，合作、合资、兼并、重组、股份制、其它等都可以考虑。

In accordance with the requirements of the Plan for the Protection and Repair of the Ancient City of the Song Dynasty, the overall deployment of "protection, planning, management, operation, and tourism" was carried out, and the urban renewal of the ancient city of Kaifeng was carried out in the way of "retention, renovation, demolition, and construction". Main projects: Yangguang Lake renovation, Kaifeng city wall connection and environmental improvement project, iron tower scenic area environmental improvement project, Kaifeng City Songdu Ancient City Longting District Urban Renewal Project, Mengkaifeng Museum Community, Confucian Cultural Exchange Center, Zhuji Lane Tourist Comprehensive Service Center, Shuanglong Lane Historic and Cultural Block Protection and Repair, Bianjing Hotel Research Base, Grand Canal (Kaifeng Section) Cultural Protection and Inheritance and Utilization Project Zhouqiao Ruins Museum Project, Daxiangguo Temple Market Reconstruction and Upgrading Project, Yimen Xinzhou Project, Zhuxian Town National Ecological and Cultural Demonstration Tourism Area, Kaifeng Smart Health Vocational College, Cultural Investment Smart City, Ring City Water System Construction, "City Wall, Long live Mountain, and Five Grain Reservoirs Jointly Build 5A Scenic Area" project, etc. The total investment is about 60 billion yuan.

The Group has unique historical and cultural resources, tourism resources, scientific and standardized modern enterprise management and operation mode, and a high-level and efficient management team. It is an important platform for Kaifeng to attract investment in cultural tourism. The Group enjoys the best business environment of the state and municipal government, forming the unique enterprise advantage of the Group. The Group enjoys all preferential policies for investment promotion in Kaifeng. The mode of cooperation is flexible. Cooperation, joint venture, merger, reorganization, joint-stock system and others can be considered.





兰考县 LANKAO COUNTY

区域概况

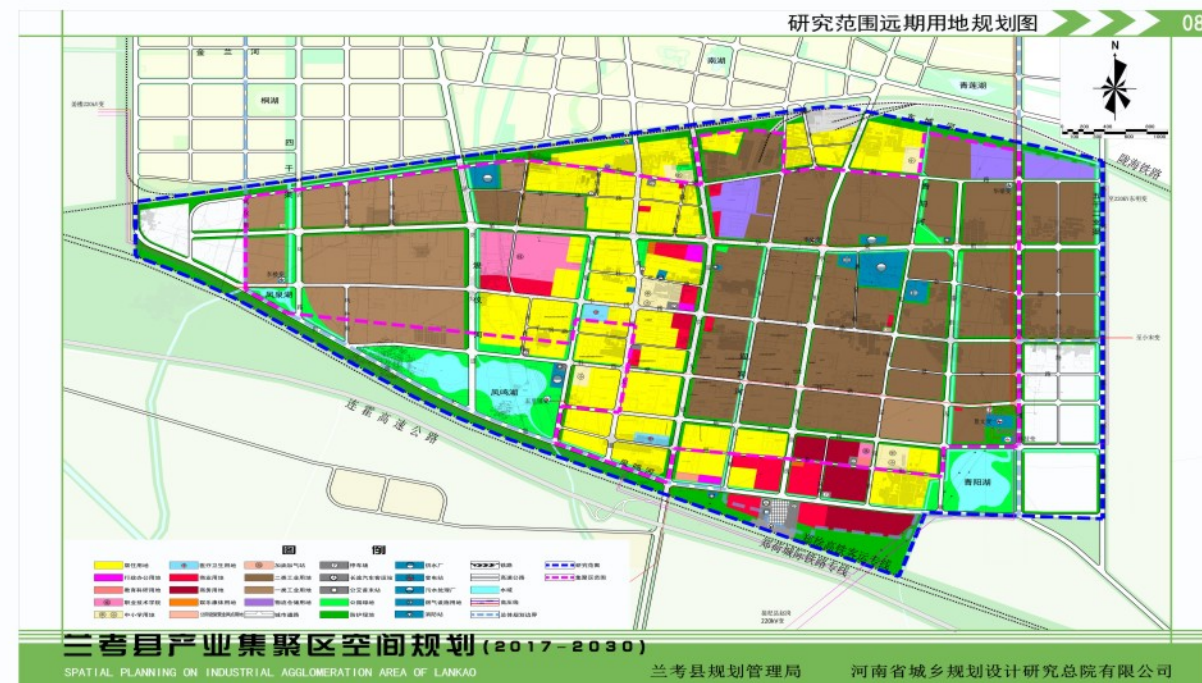
兰考地处九曲黄河最后一道弯、河南省东北部，与山东省接壤，是焦裕禄精神发源地、习近平总书记第二批党的群众路线教育实践活动联系点，现辖5个乡、8个镇、3个街道，总人口87万，总面积1116平方公里。距郑州80公里、开封45公里，是河南“一极两圈三层”半小时交通圈的重要组成部分，1小时可达新郑国际机场，4小时可达世界不冻港连云港与原木进口港口日照港。以兰考为中心，方圆500公里涵盖9大省会城市、总人口超过5亿，是全国重要的消费市场、企业全国布局 and 战略转移的不二之选。

产业发展

兰考县已形成配套完善的现代家居、节能环保2个主导产业，正在大力培育智能制造产业，巩固提升乐器制造、绿色食品、文旅文创3个特色产业，打造出特色鲜明的“2+1+3”产业体系，建成了3个产业园区。

兰考经济技术开发区。总规划面积20.02平方公里，主导产业为现代家居、节能环保，重点培育智能制造产业，先后被评为国家级绿色工业园区、全国“十四五”期间县城产业转型升级示范园区。规划建设现代家居产业园、循环经济产业园、智能制造产业园等特色区域，成功集聚富士康、光大国际等世界500强企业6家，索菲亚、格林美等上市及龙头企业40余家。

郑开特别合作区。总规划面积30平方公里，分科创走廊产业孵化园、新能源产业园、郑开合作产业园、绿色建材产业园、现代家居产业园、循环经济产业园、长三角合作产业园、职教园区“八大功能区”，承接郑州、京津冀、长三角、粤港澳等国家重大战略梯度产业转移，打造河南产业转移优先承接地。



Regional overview

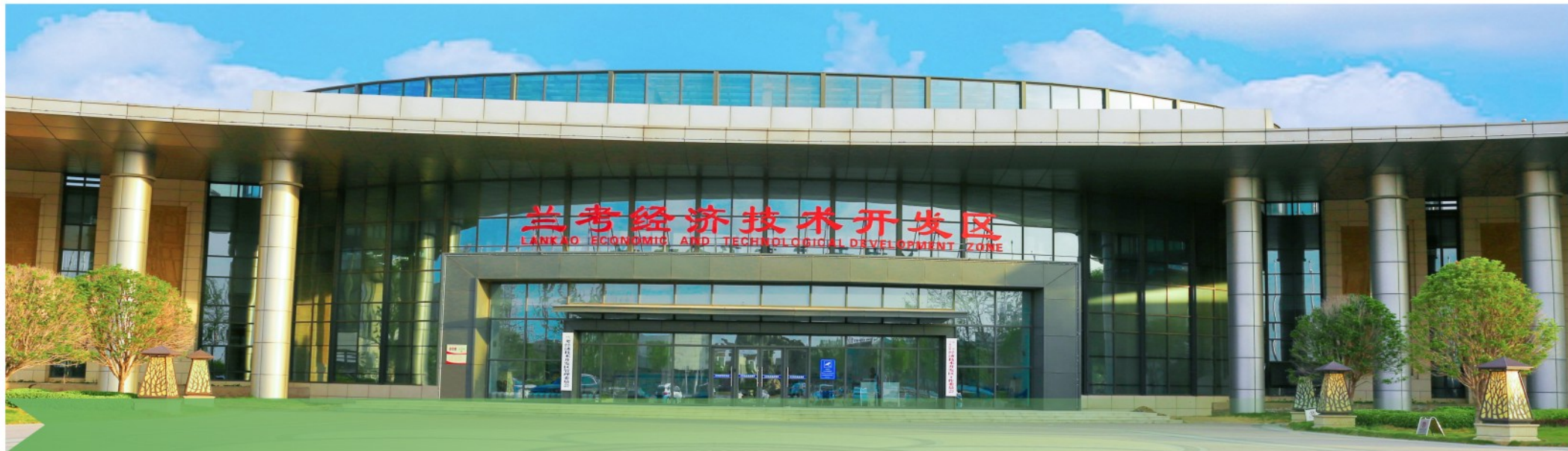
Lankao County is located in the northeast of Henan Province, bordering Shandong Province. It is the birthplace of Jiao Yulu Spirit and the contact point of the second batch of mass line education and practice activities of General Secretary Xi Jinping. It now governs 5 townships, 8 towns and 3 streets, with a total population of 870000 and a total area of 1116 square kilometers. Lankao County is 80km away from Zhengzhou and 45km from Kaifeng. It can reach Xingzheng International Airport in one hour and Lianyungang (the world's ice free port) and Rizhao Port (the log import port) in four hours. Centered on Lankao, covering nine provincial capitals with a total population of more than 500 million, it is the only choice for the important consumer market, the national layout and strategic transfer of enterprises.

Industrial development

Lankao County has formed two leading industries of modern home furnishing, energy conservation and environmental protection with complete supporting facilities. It is vigorously cultivating intelligent manufacturing industry, consolidating and upgrading three characteristic industries of musical instrument manufacturing, green food, culture, tourism and cultural innovation, and has built three industrial parks.

Lankao Economic and Technological Development Zone. Lankao Economic and Technological Development Zone has a total planning area of 20.02 square kilometers. Its leading industries are modern home furnishing, energy conservation and environmental protection. It focuses on cultivating intelligent manufacturing industries. The development zone has been successively rated as a national green industrial park and a demonstration park for industrial transformation and upgrading in the county during the "Fourteenth Five Year Plan" period. The development zone plans to build a modern home furnishing industrial park, a circular economy industrial park, an intelligent manufacturing industrial park and other characteristic areas, successfully gathering 6 of the world's top 500 enterprises, such as Foxconn and Everbright International, and more than 40 listed and leading enterprises, such as Sofia and Greenland.

Zhengkai Special Cooperation Zone. The total planning area of Zhengkai Special Cooperation Zone is 30 square kilometers. It is divided into Science and Innovation Corridor Industrial Incubation Park, New Energy Industrial Park, Zhengkai Cooperation Industrial Park, Green Building Materials Industrial Park, Modern Home Furnishing Industrial Park, Circular Economy Industrial Park, Yangtze River Delta Cooperation Industrial Park, and Vocational Education Park. The Zone undertakes the major strategic gradient industrial transfer of Zhengzhou, Beijing Tianjin Hebei, Yangtze River Delta, Guangdong, Hong Kong and Macao, and creates a priority destination for industrial transfer in Henan.



乡镇专业园区。埙阳镇·乐器小镇：占地面积766亩，现有企业187家，总建筑面积38.13万平方米，以民族乐器文化为灵魂，主要建设商业街、乐器厂房、民族乐器博物馆等。南彰镇·名门木秀产业园：占地1572亩，现有企业100余家，主要生产门套线、浸胶纸、饰面板、多层板等家居配套产品。闫楼乡·梧桐家居配套产业园：占地1000亩，现有企业13家，主要生产实木家具、指接板、封边条等家居配套产品。红庙镇·木门产业园：占地426亩，现有企业8家，主要生产木门及配套产品。东坝头镇·家居配套产业园：占地1314亩，现有企业40余家，主要生产海绵、人造石材、棺木等产品。谷营镇·食品产业园：占地600亩，现有企业11家，主要生产休闲食品、植物饮料、植物油、米面食品等产品。

服务配套

完善的教育资源。全县共有幼儿园215所，小学200所，初中52所，高中3所，专任教师2855人；建成兰考三农职业学院（高等专科）、郑州工商学院兰考校区（普通本科）、高级技工学校（公立全日制职业技术学校），在校学生一万余人；正在探索与郑州外国语学校等省内外名校开展跨区域合作办学。

可靠的医疗保障。全县有公立二级综合医院1家，二级中医院1家，妇幼保健院1家，一级综合医院1家，民营医院8家，开放床位5854张。郑大一附院计划在兰设立分支机构，建立医联体、会诊及转诊绿色通道。

丰富的公共配套。建成了图书馆、文化馆、博物馆、体育场和文化交流中心、文化礼堂和上河恬园、凤鸣湖湿地公园、兰阳湖公园等生活休闲设施。

快捷的上市渠道。兰考是中国证监会对口帮扶点，凡在兰有固定资产投资或将总部、结算中心设在兰考的企业，IPO可享受相关便利政策。

便捷的金融服务。《把兰考县纳入郑开同城化进程打造全国县域治理“三起来”样板总体方案》提出要加大省新兴产业投资引导基金（总规模1500亿元）和创业投资引导基金（总规模150亿元）对兰考支持力度，支持兰考探索设立产业发展投资基金，用于重点项目和园区建设。同时，依托兰考国有投资平台，积极为企业提供低成本、有保障、全方位的金融服务，并灵活搭建各种商业模式，推动项目快速入驻。

优质的营商环境。对新落地重大项目成立由县级领导牵头的项目服务组，全程代办各项手续，从签约、建设到投产达效实行全周期服务。

Township professional parks. Yuyang Town · Musical Instrument Town: Covering an area of 766 mu, it has 187 enterprises with a total construction area of 381300 square meters. With the culture of national musical instruments as the soul, it mainly constructs commercial streets, musical instrument factories, national musical instrument museums, etc. Nanzhang Town · Mingmen Wood Show Industrial Park: covering an area of 1572 mu, there are more than 100 enterprises, mainly producing door pocket line, dip paper, decorative panel, multilayer board and other household supporting products. Yanlouxiang Wutong Home Furnishing Industrial Park: covering an area of 1000 mu, there are 13 enterprises, mainly producing solid wood furniture, finger joint plates, edge banding and other home furnishing supporting products. Hongmiao Town · Wooden Door Industrial Park: covering an area of 426 mu, there are 8 enterprises in the industrial park, mainly producing wooden doors and supporting products. Dongbatou Town · Home Furnishing Industrial Park: covering an area of 1314 mu, the park has more than 40 enterprises, mainly producing sponge, artificial stone, coffin and other products. Guying Town · Food Industrial Park: covering an area of 600 mu, there are 11 enterprises in the park, mainly producing leisure food, vegetable beverage, vegetable oil, rice and flour and other products.

Services

Perfect educational resources. There are 215 kindergartens, 200 primary schools, 52 junior middle schools and 3 senior high schools in the county, with 2855 full-time teachers; More than 10000 students have been enrolled in Lankao Vocational College of San Nong (college), Lankao Campus (regular undergraduate) of Zhengzhou Technology and Business University, and Senior Technical School (public full-time vocational and technical school); We are exploring cross regional cooperation with Zhengzhou Foreign Language School and other famous schools inside and outside the province.

Reliable medical insurance. There are 1 public secondary general hospital, 1 secondary traditional Chinese medicine hospital, 1 maternal and child health hospital, 1 primary general hospital, 8 private hospitals and 5854 open beds in the county. The First Affiliated Hospital of Zhengzhou University plans to set up a branch in Lanzhou, establish a medical union, and establish a green channel for consultation and referral.

Abundant public facilities. Library, cultural center, museum, stadium and cultural exchange center, cultural auditorium, Shanghe Tianyuan, Fengming Lake Wetland Park, Lanyang Lake Park and other living and leisure facilities have been built.

Fast listing channels. Lankao is the counterpart support point of China Securities Regulatory Commission. For enterprises that have fixed asset investment in Lankao or have their headquarters and settlement center in Lankao, IPO can enjoy relevant convenience policies.

Convenient financial services. According to the policy and plan, the provincial investment guidance fund for emerging industries (with a total scale of 150 billion yuan) and venture capital guidance fund (with a total scale of 15 billion yuan) should be strengthened to support the Lankao, and support the Lankao to explore the establishment of an industrial development investment fund for key projects and park construction. At the same time, relying on the Lankao state-owned investment platform, we will actively provide enterprises with low-cost, guaranteed and comprehensive financial services, and flexibly build various business models to promote the rapid settlement of projects.

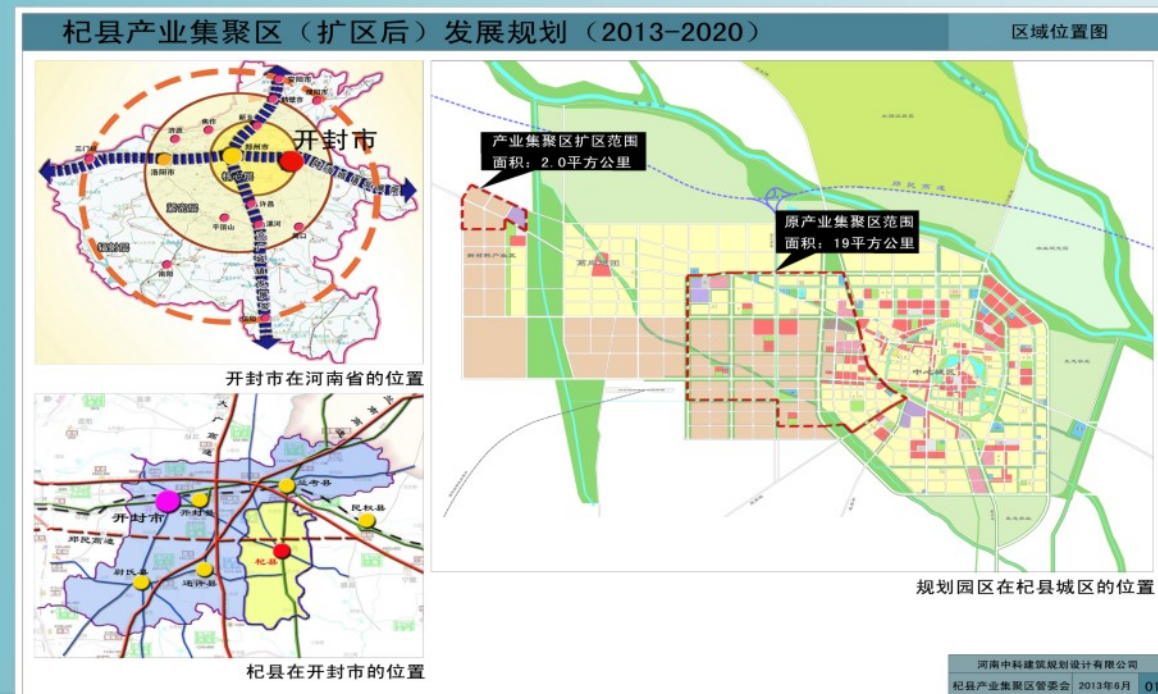
High quality business environment. Set up a project service team led by county leaders for major new projects to handle all formalities throughout the process, and provide full cycle services from signing the contract, construction to effective production.



杞县 QI COUNTY

区域概况

杞县位于河南省东部，总面积1257.18平方公里，其中耕地面积90862.26万公顷，城市建成区面积25平方公里。总人口123.25万人。现辖7个镇、13个乡、1个街道、1个产业集聚区、1个特色商业区。外环6县:东睢县，南太康，西开封，北兰考，东北为民权，西南邻通许。交通便利，西距郑州国际机场 120公里，陇海铁路横贯全境，京广、京九铁路左右为邻，310、106 国道纵横交汇，连霍、日南、郑民、商登高速交织密集。



杞县年产大蒜 70 万吨，被誉为“中国大蒜之乡”。全县共有大型连锁商超企业6家，建成乡镇大型商贸中心 32个、专业大市场 35个。全县商业网点已达 1.2万个，电商物流产业园配送中心、金杞大蒜冷链物流配送中心等具有较强辐射能力的物流园区2个，还有1个现代物流产业园项目正在建设中。乡镇快递站点覆盖率 100%，村级快递站点覆盖率 20%。先后荣获全国农业产业化示范县、全国粮食生产先进县、全国农业机械化示范县、国家级出口大蒜质量安全示范区、国家级电子商务进农村示范县等称号。

Regional overview

Qi County is located in the east of Henan Province, with a total area of 1257.18 square kilometers, including 908,622,600 hectares of cultivated land and 25 square kilometers of urban built-up area. The total population is 1,232,500. Qi County now has jurisdiction over 7 towns, 13 townships, 1 street, 1 industrial cluster and 1 characteristic business district. There are six counties around: Sui County in the east, Taikang County in the south, Kaifeng City in the west, Lankao County in the north, Minquan County in the northeast, and Tongxu County in the southwest. Qixian County enjoys convenient transportation, 120 kilometers from Zhengzhou International Airport in the west, and Lanzhou-Lianyungang Railway runs through the county. Qixian County is close to Beijing-Guangzhou Railway and Beijing-Kowloon Railway.



Qixian County has an annual output of 700,000 tons of garlic, known as the "hometown of garlic in China". There are 6 large chain stores and super enterprises in the county, 32 large business centers in villages and towns, and 35 specialized markets. The county has 12,000 commercial networks, and 2 logistics parks with strong radiation capacity, such as e-commerce logistics industrial park distribution center and Jinqi garlic cold chain logistics distribution center. There is also a modern logistics industrial park project under construction. The coverage rate of township express stations is 100%, and that of village express stations is 20%. It has successively won the titles of National Demonstration County of Agricultural Industrialization, National Advanced County of Grain Production, National Demonstration County of Agricultural Mechanization, National Demonstration Zone of Garlic Quality Safety for Export, National Demonstration County of E-commerce in Rural Areas, etc.



产业发展

杞县铝型材产业园。园区位于杞县葛岗镇，现已入驻的企业有世界500强河南能源化工集团投资的开封龙宇化工有限公司年产4万吨聚甲醛生产项目；上市公司横店集团东磁股份有限公司投资的杞县东磁新能源有限公司年产2GW（2000兆瓦）单晶硅生产项目；上市公司深圳市贝特瑞新能源材料股份有限公司投资的开封瑞丰新材料有限公司年产2万吨锂离子电池负极材料生产项目、世合铝型材产业加工基地项目等。

杞县拥有铝型材产业企业30余家，熙朝铝业、天冠铝业年产铝塑型材达10万吨以上。世合铝型材产业加工基地项目规划总占地面积6000亩，正在快速推进，目前，项目一期17家企业已建成投产。二期规划占地1600亩，目前入驻的10个项目正在建设中。产业链条涵盖有铝型材原材料挤压生产、型材加工及研发、模具制作、全铝家居制造、特种玻璃、系统门窗、智能化集中仓储、线上交易平台、特色金融服务、海外设仓进出口等型材产业全链条。

杞县大蒜产业园。杞县大蒜面积和产量连年位居全国县域第一位，大蒜种植面积常年稳定在70万亩左右，杞县已发展150多个大蒜生产专业村，15个无公害生产示范基地；大蒜保鲜与恒温冷藏库700多座，年储存能力达到70万吨，加工能力超过10万吨；拥有大蒜贸易企业130家，专业大蒜经纪人1万多人。

杞县（裴村店）冷链物流园。杞县（裴村店）冷链物流园项目选址位于裴村店乡，南临省道327，西临规划建设兰沈高速。项目总投资约5亿元，总占地面积217056.00m²（折合325.58亩），项目总投资45280万元，总建筑面积81600.00m²，主要建设高温冷藏库8栋，库容20万吨，建筑面积72000.00m²，冷库出入库外侧设有装卸站台，建筑面积9600.00m²，配套建设绿化、道路、停车场等，购置制冷设备、货架、叉车、运输车辆等设备若干套。



Industrial development

Qixian Aluminum Profile Industrial Park. The park is located in Gegang Town, Qixian County. The enterprises that have settled in now include Kaifeng Longyu Chemical Co., Ltd.'s 40000 ton/year polyformaldehyde production project invested by Henan Energy Chemical Group, one of the world's top 500 enterprises; Qixian Dongci New Energy Co., Ltd. with an annual output of 2GW (2000 MW) monocrystalline silicon production project invested by Hengdian Group Dongci Co., Ltd., a listed company; Kaifeng Ruifeng New Materials Co., Ltd.'s 20000 ton/a lithium ion battery cathode material production project and Shihe aluminum profile industry processing base project invested by Shenzhen Beiteri New Energy Materials Co., Ltd., a listed company.

Qixian has more than 30 aluminum profile enterprises, including Xichao Aluminum and Tianguan Aluminum, which produce more than 100000 tons of aluminum plastic profiles annually. The planned total area of the project is 6000 mu. At present, in the first phase of the project, 17 enterprises have been completed and put into operation. The second phase is planned to cover an area of 1600 mu. At present, 10 projects are under construction. The industrial chain covers the whole chain of aluminum profile industry, including extrusion production of aluminum profile raw materials, profile processing and R&D, mold making, all aluminum household manufacturing, special glass, system doors and windows, intelligent centralized warehousing, online trading platform, characteristic financial services, overseas warehouse import and export, etc.

Qi County Garlic Industrial Park. Qi County ranks first in terms of garlic area and output year after year, and the garlic planting area is stable at about 700000 mu all year round. Qi County has developed more than 150 professional garlic production villages and 15 pollution-free production demonstration bases. Qixian County has built more than 700 garlic preservation and constant temperature refrigerated warehouses, with an annual storage capacity of 700000 tons and a processing capacity of more than 100000 tons. In addition, Qixian County has 130 garlic trading enterprises and more than 10000

professional garlic brokers.

Qi County (Peicun Store) Cold Chain Logistics Park. Qi County (Peicundian) Cold Chain Logistics Park Project is located in Peicundian Township, adjacent to Provincial Highway 327 in the south and Lanzhou Shenyang Expressway in the west. The total investment of the project is about 500 million yuan, covering an area of 217056.00 m² (equivalent to 325.58 mu). The total investment of the project is 452.8 million yuan, with a total building area of 81600.00 m². The project is mainly to build 8 high temperature refrigerated warehouses, with a storage capacity of 200000 tons, and a building area of 72000.00 m². A loading and unloading platform is set outside the warehouse entrance and exit, with a building area of 9600.00 m². Greening, roads, parking lots and other supporting facilities are constructed. Several sets of refrigeration equipment, shelves, forklifts, transport vehicles and other equipment are purchased.



服务配套

完善的教育资源。全县共有幼儿园195所，小学421所，初中49所，高中4所，专任教师1332人；公立全日制职业技更放术学校1所，在校学生1768人。

可靠的医疗保障。全县有公立二级综合医院3家，一级综合医院1家，民营医院16家，开放床位2841张。建立医共体、会诊及转诊绿色通道。

丰富的公共配套。建成了图书馆、文化馆、体育场和文化交流中心、东湖公园、汉风郦园等生活休闲设施。

优质的营商环境。落实“信易+”，县卫健委开展“信易+医疗”、县教体局开展“信易学”、县文旅局开展“信易游”、“信易住”、县商务局开展“信易购”等场景应用，让守信企业和群众享受更多信用便利，切身体会到诚信让消费心，诚信让生活更美好。

Services

Perfect educational resources. There are 195 kindergartens, 421 primary schools, 49 junior middle schools, 4 senior high schools, and 1332 full-time teachers in the county; There is a public full-time vocational technical school with 1768 students.

Reliable medical insurance. There are 3 public secondary general hospitals, 1 primary general hospital, 16 private hospitals and 2841 open beds in the county. The county has established a medical community, a green channel for consultation and referral.

Abundant public facilities. Library, cultural center, stadium and cultural exchange center, East Lake Park, Hanfeng Li Garden and other living and leisure facilities have been built.

High quality business environment. To implement "Xinyi+", Qixian County Health Committee carried out "Xinyi+Medical", the County Education and Sports Bureau carried out "Xinyi Learning", the County Culture and Tourism Bureau carried out "Xinyi Travel", "Xinyi Living", the County Commerce Bureau carried out "Xinyi Shopping" and other scene applications, so that trustworthy enterprises and the masses can enjoy more credit facilities, and realize that honesty can reassure consumers and make life better.



通许县 TONGXU COUNTY

区域概况

通许县位于开封市东南部，总面积767平方公里，辖5镇6乡1个街道办1个省级高新区，总人口69万。近年来，在一带一路的时代背景下，通许借助中原经济区、航空港经济试验区、河南自贸区开封片区上升为国家战略等发展大势，抢抓机遇，顺势而为，不断集聚发展优势。通许自古就是交通要塞，通许之名就取自“汴京”直通“许国”故地之义。如今的通许，区位优势更加优越，3条高速公路交织互通，2条国道3条省道穿城而过，大广高速将在县城东北部增设一个高速出入口，县城周边高速出入口将达到4个，形成了四通八达的交通网络。无论是从通许“通”字的历史寓意，还是从“得中原者得天下”的战略思维，布局通许都将是您很好的选择。

产业发展

智能制造产业。该产业是省重点产业集群、开封市十大产业之一。目前，已拥有筑友智能装饰产业园、增浩科技等众多知名企业。将在这一领域广泛开展合作，努力形成更加完整的产业链，加快建设开封制造业转型升级先行区，打造智能化生产示范基地。

农副产品深加工产业。通许粮食总产近40万吨，无公害蔬菜种植面积30万亩。我们规划建设了2.6平方公里的食品及农副产品深加工专业园区，其中，1730亩的酸辣粉、预制菜产业园区位于其中；下一步，我们将继续依托资源优势，着力在农副产品深加工方面延链、补链、强链，全力打造河南农副产品深加工基地、国家级农业示范基地。现拥有丽星食品、谈小爱食品、宇东粉业等农产品深加工龙头企业15家；其中，丽星食品集设备研发、生产、销售、原料种植、加工、配料、包装发展于一体；同时为“嗨吃家”、“蜡笔小新”等60多家网红产品代工生产，全年生产方便粉丝7亿盒，是全国最大的酸辣粉生产加工基地。通许将以丽星食品为龙头，调整种植结构，招引酸辣粉上下游全产业链生产企业，努力打造百亿级酸辣粉产业集群，成为“酸辣粉之都”。

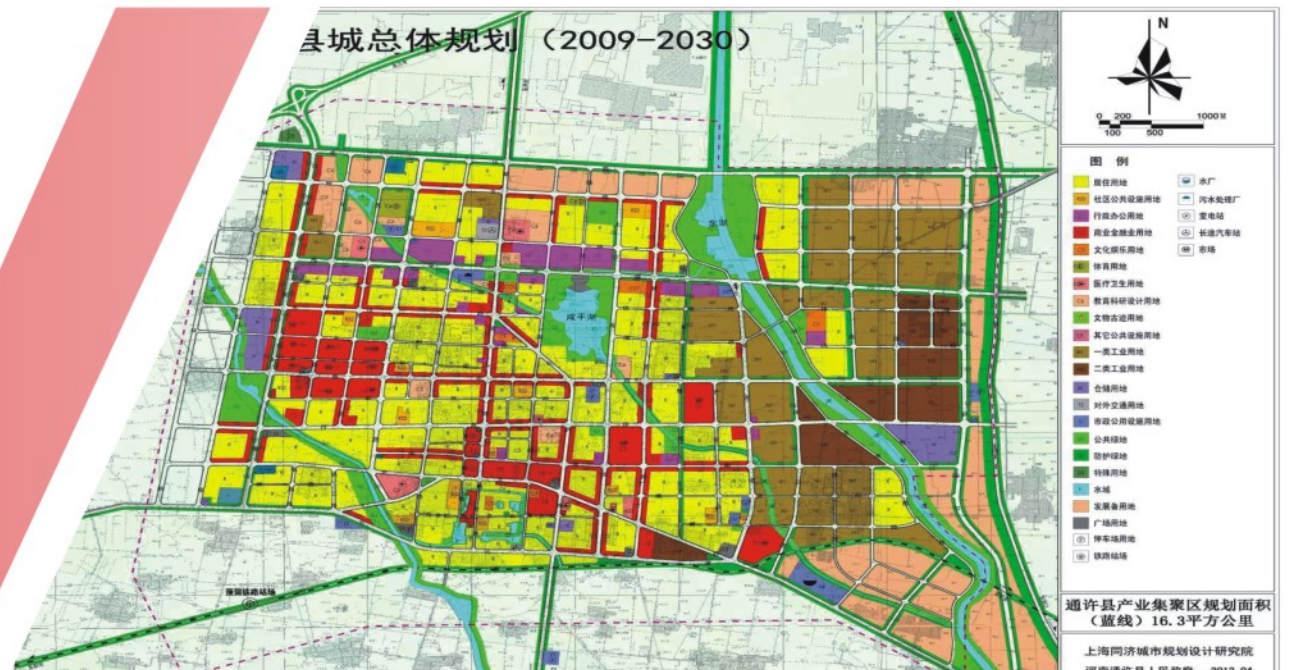
Regional overview

Tongxu County is located in the southeast of Kaifeng City, with a total area of 767 square kilometers. The county has jurisdiction over 5 towns, 6 townships, 1 sub district office and 1 provincial high-tech zone, with a total population of 690,000. In recent years, under the "Belt and Road" initiative, the Central Plains Economic Zone, Airport Economic Pilot Zone and Kaifeng Area of Henan Free Trade Zone are allowed to become national strategies and other development trends, so as to continuously gather their own development advantages. Today's Tongxu County is superior in location. In Tongxu County, there are 3 expressways, and 2 national highways and 3 provincial highways. A new high-speed entrance and exit will be built in the east and north of Tongxu County, and there will be 4 high-speed entrances and exits around the County.

Industrial development

Intelligent manufacturing industry. This industry is a provincial key industrial cluster and one of the top ten industries in Kaifeng. At present, there are many well-known enterprises such as Zhuyou Intelligent Decoration Industrial Park and Zengho Technology. The County will carry out extensive cooperation in this field, strive to form a more complete industrial chain, accelerate the construction of Kaifeng pilot zone for transformation and upgrading of manufacturing industry, and build an intelligent production demonstration base.

Deep processing industry of agricultural and sideline products. The total grain output of Tongxu County is nearly 400000 tons, and the planting area of pollution-free vegetables is 300000 mu. We plan to build a 2.6 square kilometer food and agricultural and sideline products deep processing professional park, including 1730 mu of hot and sour powder, prefabricated vegetable industrial park; In the next step, we will continue to rely on our resource advantages to extend, supplement and strengthen the chain in terms of agricultural and sideline products deep processing, with the aim of building Henan agricultural and sideline products deep processing base and national agricultural demonstration base. At present, there are 15 leading enterprises for deep processing of agricultural products such as Lixing Food, Tan Xiaoi Food, Yudong Flourmill, etc; Among them, Lixing Food integrates equipment R&D, production, sales, raw material planting, processing, ingredients and packaging development; At the same time, Lixing Food Company manufactures more than 60 online celebrity products, such as "Heishijia" and "Crayon Xiaoxin". It produces 700 million boxes of instant vermicelli throughout the year. It is the largest production and processing base of Hot and Sour Rice Noodles in China. Tongxu County will take Lixing Food as the leader, adjust the planting structure, attract the whole industrial chain production enterprises of Hot and Sour Rice Noodles, and strive to build a 10-billion-RMB level Hot and Sour Rice Noodles industrial cluster, to become the "the capital of Hot and Sour Rice Noodles".



服务配套

丰富的矿产·物产资源。通许矿产资源丰富，拥有相当于29.5亿吨标准煤的大规模地热资源，我们将依托丰富的资源优势，着力打造“中原温泉之乡”。通许土质肥沃，雨量充足，自古就有中原“小粮仓”的美称，盛产优质小麦、玉米等粮食作物和花生、大蒜、胡萝卜、西瓜等经济作物。近年来，粮食产量连年增收，“通许小麦”“丽星粉丝”等绿色食品远销全国。同时，通许人力资源优势明显，是省劳务输出基地、省职业教育强县，可以有效保障企业的用工需求。丰富的资源优势是您投资创业、事业成功的重要保障。



通许县酸辣粉行业产业链导图

原材料

- 农作物种植: 引导各乡镇种植
- 使用淀粉加工: 需招商
- 粉浆生产: 需招商
- 配料生产:
 - 调味料包: 需招商
 - 酸辣粉包: 需招商
 - 食醋包: 需招商
 - 蔬菜包: 需招商
 - 花生包: 需招商
 - 其他: 需招商
- 包装材料生产:
 - 内包装: 冰袋包装
 - 外包装: 纸富邦
 - 餐具: 需招商

渠道

- 机械设备供应商: 厨房机械
- 线上渠道:
 - 传统电商: 天猫, 京东, 拼多多, 各类电商平台
 - 新零售: 抖音, 快手, 蘑菇街, 新型电商平台
 - 社区团购: 美团优选, 淘菜菜, 京东到家
 - 直播电商: 各类直播电商平台
 - 现代渠道: 连锁商超, 连锁便利店, 中小超市, 夫妻老婆店
 - 传统渠道: 夫妻老婆店
 - 特选渠道: 校园, 汽车站

通许县招商引资服务中心



Services

Rich mineral resources. Tongxu County is rich in mineral resources, with a large-scale geothermal resource equivalent to 2.95 billion tons of standard coal. We will rely on our rich resource advantages to build a "hometown of hot springs in the Central Plains". With fertile soil and sufficient rainfall, it has been known as the "small granary" in the Central Plains since ancient times. It is rich in food crops such as high-quality wheat and corn, and economic crops such as peanuts, garlic, carrots and watermelons. In recent years, the grain output has increased year after year, and green foods such as "Tongxu Wheat" and "Lixing Vermicelli" have been sold all over the country. At the same time, it has obvious advantages in human resources. It is a labor export base of the province and a strong vocational education county of the province, which can effectively guarantee the employment needs of enterprises. Abundant resource advantages are an important guarantee for your investment and business success.



便捷的配套设施。建成了图书馆、文化馆、体育场、会客厅和咸平公园等。“三河”“三湖”融汇贯通，规划建设国储林1.9万亩，建成了生态廊道104公里，打造了“水在城中流，城在林中建，路在绿中行”的宜居环境。目前，城区生态水域近4000亩，城市绿地率达到30%，先后荣获省卫生县城、省园林县城等荣誉称号。



丰厚的政策红利。作为开封南部经济带的中心，通许正在不断刷新自己的名片。相继荣获全国平安建设先进县、全国土地集约节约利用示范县、国家级出口食品农产品质量安全示范区、国家级电子商务进农村综合示范县、国家优质小麦生产基地县、国家生猪调出大县、省农业标准化示范县、省级出口木制品质量安全示范区、省对外开放先进县等称号。在财税、土地等方面带来了一系列政策红利。在资金方面，一块块金字招牌，使各级财政用于扶持产业发展的专项资金，在同等条件下向通许倾斜。在用地方面，作为省高新技术产业开发区，仅土地一项就可以为企业降低30%成本；作为全国土地集约节约模范县，通许的建设用地指标更加充裕，目前土地储备5073亩。

优质的营商环境。通许坚持“极简审批、极严约束、极优服务、极速效率”，推进政务服务智能化、便捷化，让更多的政务服务、公共服务“掌上办”“网上办”。继续推进“四减”（减材料、减环节、减时限、减跑动次数）工作，全面实行平台之外无审批，实现了“一门集中、一窗受理、一网通办、一次办结”。实行重大项目建设并联审批工作机制，建立了“便捷开工审批集成服务平台”，推行重大项目网上全程办理，审批办结时限压缩至40个工作日，叫响了项目落地的通许速度。全力推进“万人助万企”活动，实行县级领导、科级干部、青年后备干部三级分包制度，全县133家企业均派驻首席服务官，定期深入企业查实情、千方百计解难题，全心全意搞服务，以切实行动帮企业“克难”，助经济“蓄能”，为发展“加分”，持续开展优化营商环境专项整治，切实打造通许营商环境靓丽名片，全力助推通许县域经济高质量发展。2019年、2020年在全市营商环境评比中，连续两年综合成绩第一，被评为开封市优化营商环境优秀县和对外开放先进县。

Convenient supporting facilities. Tongxu County has built a library, cultural center, stadium, reception hall and Xianping Park. Tongxu County plans to build 19000 mu of national reserve forest and 104 km of ecological corridor. At present, the ecological water area in the urban area is nearly 4000 mu, and the urban green space rate has reached 30%. It has been awarded the honorary titles of Provincial Health County and Provincial Garden County.

Rich policy dividends. As the center of the southern economic belt of Kaifeng, Tongxu County is constantly refreshing its business status. Tongxu County has successively won the titles of National Advanced County for Safe Construction, National Demonstration County for Intensive and Economical Utilization of Land, National Demonstration Zone for Quality Safety of Exported Food and Agricultural Products, National Comprehensive Demonstration County for E-Commerce in Rural Areas, National High quality Wheat Production Base County, National Major Pig Transfer County, Provincial Demonstration County for Agricultural Standardization, Provincial Demonstration Zone for Quality Safety of Exported Wood Products, and Provincial Advanced County for Opening to the Outside World. It has brought a series of policy dividends in finance, taxation and land. In terms of funds, gold lettered signboards enable the special funds used by the finance at all levels to support industrial development to be tilted to Tongxu County under the same conditions. In terms of land use, as a provincial high-tech industrial development zone, land alone can reduce the cost of enterprises by 30%; As a national model county for land intensive conservation, Tongxu County has more abundant indicators of construction land. At present, the land reserve is 5073 mu.

High quality business environment. Tongxu County adheres to the principle of "minimalist approval, strict restriction, excellent service, and rapid efficiency", promotes intelligent and convenient government services, and allows more government services and public services to be handled online. Tongxu County continued to promote the work of reducing materials, links, time limits and times. Tongxu County implemented a parallel approval mechanism for major project construction, promoted online whole process handling of major projects, and reduced the time limit for completion of approval to 40 working days, which called for the general permission speed of project implementation. Tongxu County makes every effort to promote the activity of "ten thousand people helping ten thousand enterprises", implements the three-level subcontracting system and 133 enterprises in the county are stationed with chief service officers to help enterprises solve difficulties and help economic development with practical actions. In addition, Tongxu County also continued to carry out special improvement on optimizing the business environment to boost the high-quality development of the County's economy. In 2019 and 2020, Tongxu County won the first place in the city's business environment evaluation for two consecutive years, and was rated as an excellent county for optimizing business environment and an advanced county for opening up.





尉氏县

WEISHI COUNTY

区域概况

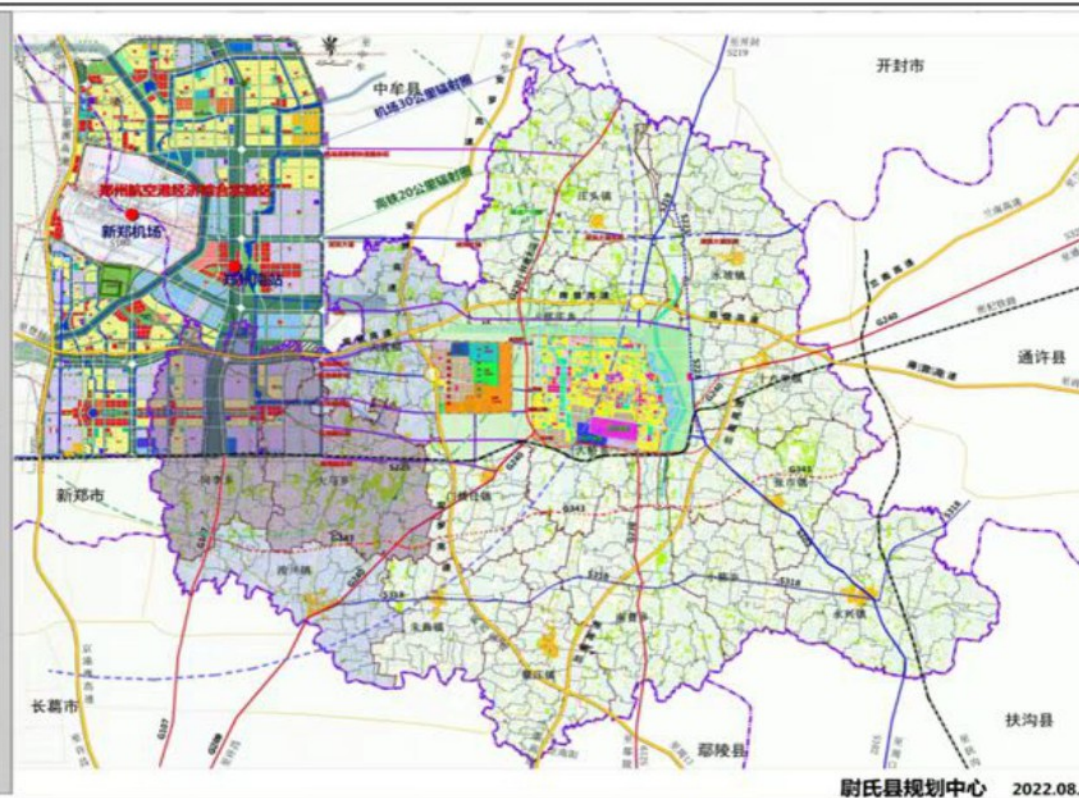
尉氏县地处豫东平原，总面积1307平方公里，辖9镇7乡，一个街道办事处，一个产业集聚区，516个行政村，总人口83.8万。尉氏县地势西北高、东南低，西部多沙岗丘陵，双洎河两岸为高亢平原，东部为黄河冲积平原，境内主要河流有贾鲁河、康沟河、双洎河、杜公河，均汇入淮河支流颍河，淮河支流涡河斜穿县境东北部。尉氏县全境均属淮河流域，区位优势、交通便利，过境国省道由四纵三横组成，四纵：G107、S224、G230、S223，三横：S317、S102、G343~S318，三条过境省高速兰南高速、商登高速和机西高速呈三角形交汇于县城周围，初步形成了与航空港区和郑汴新区对接融合、联动发展的良好态势。尉氏境内地势平坦、气候宜人，农林水资源丰富，是国家和河南省粮食生产先进县，全国优质农副产品区、国家级生态示范区。

产业发展

尉氏县围绕“融入航空港、建设新尉氏”总目标，强力实施“工业强县、项目带动、招商引资、新型城镇化和新型农业产业化”五大战略，重点谋划对接高端制造、循环经济和新兴产业等，高标准打造尉氏县先进制造业开发区。

尉氏县先进制造业开发区位于尉氏县城西部，规划面积26.7平方公里，建成区面积已达到18.09平方公里，分东、西两区，主导产业为纺织服装、节能环保、生物科技。先后被省政府命名为“河南省中原纺织工业基地”、“循环经济示范区”、“最具投资价值产业集聚区”，荣获“河南5星级产业集群金星奖”、“河南省5A级营商环境集聚区”、“河南省百园增效新兴产业园区”称号。

尉氏融港规划图



Regional overview

Weishi County is located in the East Henan Plain, with a total area of 1307 square kilometers. The county has jurisdiction over 9 towns, 7 townships, a sub district office, an industrial cluster and 516 administrative villages. The total population of the county is 838,000. Weishi County is high in the northwest and low in the southeast. In the west, there are many sand hills and hills. On both banks of Shuangji River, there is a high plain. In the east, there is a Yellow River alluvial plain. The main rivers in Weishi County include Jialu River, Kanggou River, Shuangji River and Dugong River. All the above rivers flow into Yinghe River, a tributary of Huaihe River, and Wohe River, a tributary of Huaihe River, runs across the northeast of the county. Weishi County is located in the Huaihe River basin with superior location and convenient transportation. Provincial roads include G107, S224, G230, S223, S317, S102, G343~S318; The provincial expressways include Lankao-Nanyang Express, Shangqiu-Dengfeng Expressway and Anyang-Luoshan Expressway, initially forming a good trend of integration and joint development with the airport area and Zhengbian New Area. Weishi County has flat terrain, pleasant climate and rich agricultural, forestry and water resources. It is an advanced county in grain production in China and Henan Province, a national high-quality agricultural and sideline product area and a national ecological demonstration area.

Industrial development

Focusing on the general goal of "integrating into the Zhengzhou airport economy zone and building a new Weishi", Weishi County vigorously implements the five strategies of "strong industrial county, project driven, investment attraction, new urbanization and new agricultural industrialization". Weishi County focuses on planning to connect high-end manufacturing, circular economy and emerging industries, and build Weishi Advanced Manufacturing Development Zone with high standards.

Weishi County Advanced Manufacturing Development Zone is located in the west of the County, with a planned area of 26.7 square kilometers and a built-up area of 18.09 square kilometers. The development zone is divided into east and west areas, and the leading industries are textile and clothing, energy conservation and environmental protection, and biotechnology. The development zone has been successively named by the provincial government as "Henan Zhongyuan Textile Industrial Base", "Circular Economy Demonstration Zone", "Industrial Cluster with the Most Investment Value", and has won the titles of "Henan 5-star Industrial Cluster Gold Star Award", "Henan 5A Business Environment Cluster", and "Henan Hundred Park Efficiency Increasing Emerging Industrial Park".



尉氏县汽车零部件产业园位于尉氏县先进制造业开发区，距离中心城区5公里，距离航空港汽车产业基地15公里。围绕国家、省市重大战略部署和航空港区产业布局，规划总面积约15平方公里的汽车零部件产业园，依托港区万亩汽车制造产业园，实施链条招商、股权招商，积极招引上下游配套企业，大力发展汽车零部件进出口贸易，建设涵盖整车制造、技术研发、产业孵化、职业教育及生活配套的汽车零部件产业园，加强与国有企业、投资基金、上市公司、世界500 企业对接合作，加快 上下游全产业链规模集聚，打造2000亿 级汽车制造业产业集群。

Weishi Auto Parts Industrial Park is located in Weishi Advanced Manufacturing Development Zone, 5km from the central urban area and 15km from the airport auto industry base. The industrial park is planned to cover a total area of about 15 square kilometers around the major national, provincial and municipal strategic deployment and the industrial layout of the airport area. Relying on the 10000 mu automobile manufacturing industrial park in the port area, the industrial park implements chain investment attraction and equity investment attraction, actively attracts upstream and downstream supporting enterprises, and develops the import and export trade of automobile parts. The industrial park covers vehicle manufacturing, technology research and development, industry incubation, vocational education and living facilities. By strengthening the connection and cooperation with state-owned enterprises, investment funds, listed companies and the world's 500 enterprises, we will accelerate the scale of the whole upstream and downstream industrial chains and build a 200 billion level automobile manufacturing industry cluster.

Kaigang Economic Belt is one of the three new economic industrial belts carefully planned by Kaifeng City in order to broaden the new development space. The planned area is about 100 square kilometers. Kaigang belt, the main artery of transportation, runs through the north and south, realizing the seamless connection between Kaifeng and the port area. The economic belt harbor cluster (Kaigang Economic Zone) is located in the northwest of Weishi County, with a planned area of about 30 square kilometers. The leading industries of the economic belt are aviation logistics, scientific and technological research and development, high-end manufacturing and port economic services. The economic belt is called the most dynamic, potential and attractive economic zone of Weishi County by industry insiders. It will become the "bridgehead" of Kaifeng's opening and cooperation with the airport area and an important part of the economic connectivity development of "Zhengbian Port".



开港经济带是开封市为了拓宽新的发展空间，而精心谋划的三个新的经济产业带之一，规划面积约100平方公里，交通大动脉开港大道贯穿南北，实现开封与港区的无缝对接。开港经济带临港组团(开港经济区)位于尉氏县西北部，规划面积约30平方公里，其主导产业为航空物流、科技研发、高端制造及临港经济服务等，规划一经提出，即被业界人士称为尉氏县最具发展活力、最具发展潜力、最具发展魅力的经济区，必将成为开封与航空港区开放合作的“桥头堡”、“郑汴港”经济联通发展的“金三角”



服务资源

完善的教育资源。尉氏县全县共有幼儿园（含民办）204所，小学（含民办）204所，初中（含民办）32所，高中（含民办）6所，专任教师6050人；建成公立全日制职业技术学校1所，是尉氏县职教中心，在校生1500人；正在探索与省内外名校开展跨区域合作办学1所，是与河南统计职业技术学院合作办学；校园足球场地69块，社会足球场地9块，共计78块足球场地。

Services

Perfect educational resources. Weishi County has 204 kindergartens (including private ones), 204 primary schools (including private ones), 32 junior middle schools (including private ones), 6 high schools (including private ones), and 6,050 full-time teachers; One public full-time vocational and technical school (Weishi County Vocational Education Center), attracting 1500 students. The county is exploring a cross regional cooperative school running with famous schools inside and outside the province (with Henan Statistics Vocational and Technical College). Weishi County has 69 campus football fields and 9 social football fields, totaling 78 football fields.

Reliable medical insurance. Weishi County has 2 public secondary general hospitals, 1 secondary TCM hospital, 1 maternal and child health hospital, 13 primary general hospitals and 14 private hospitals.



可靠的医疗保障。市里招商用尉氏的县情数据:全县有2家公立二级综合医院，二级中医院 1家，妇幼保健院 1 家，一级综合医院 13家，民营医院 14家。

丰富的公共配套。建成了图书馆、文化馆、体育场、城市展览馆和文化艺术中心，滨河路生态步道，街心公园20个，两湖中心公园、贾鲁河湿地公园正在筹建中。优化的服务环境。推行阳光政务，优化审批流程，简化办事程序，持续优化高效便捷的政务环境、竞争有序的市场环境、公平正义的法治环境、开放包容的人文环境、宜居宜业的生态环境，实现优化营商环境“极简”审批、“极速”效率、“极优”服务、“极严”约束的“四极”效果。对投资的重大项目和高新技术项目，坚持“五个一”招商项目跟踪服务机制;对推动全县转型升级具有重大影响和带动能力的招商项目，优先落实建设条件，协调解决有关问题。

Abundant public facilities. Weishi County has built libraries, cultural centers, stadiums, urban exhibition halls, cultural and art centers, ecological trails on Binhe Road, and 20 street parks. In addition, the Central Park of the Two Lakes and the Jialu River Wetland Park are under construction. Weishi County optimized the approval process and simplified the procedures. The county continues to optimize the efficient and convenient government environment, the orderly competitive market environment, the fair and just legal environment, the open and inclusive human environment, and the ecological environment suitable for living and working. For investment projects that have a significant impact on and drive the county's transformation and upgrading, priority should be given to implementing the construction conditions and coordinating the solution of relevant problems.



祥符区

XIANGFU DISTRICT

区域概况

祥符区地处郑州大都市圈、郑汴港金三角核心区，总面积1302平方公里，下辖14个乡镇，1个街道办事处，1个省级先进制造业开发区，1个省级文化旅游发展试验区，1个国家级产城融合示范区，总人口82万人，西距省会郑州50公里，南距新郑机场64公里，郑徐高铁及陇海铁路跨越东西，国省道纵横交错，郑民、连霍、大广等5条高速在境内互联互通，往来郑州的高速公路免费通行，正逐渐成为郑开兰同城化发展的黄金节点。

产业发展

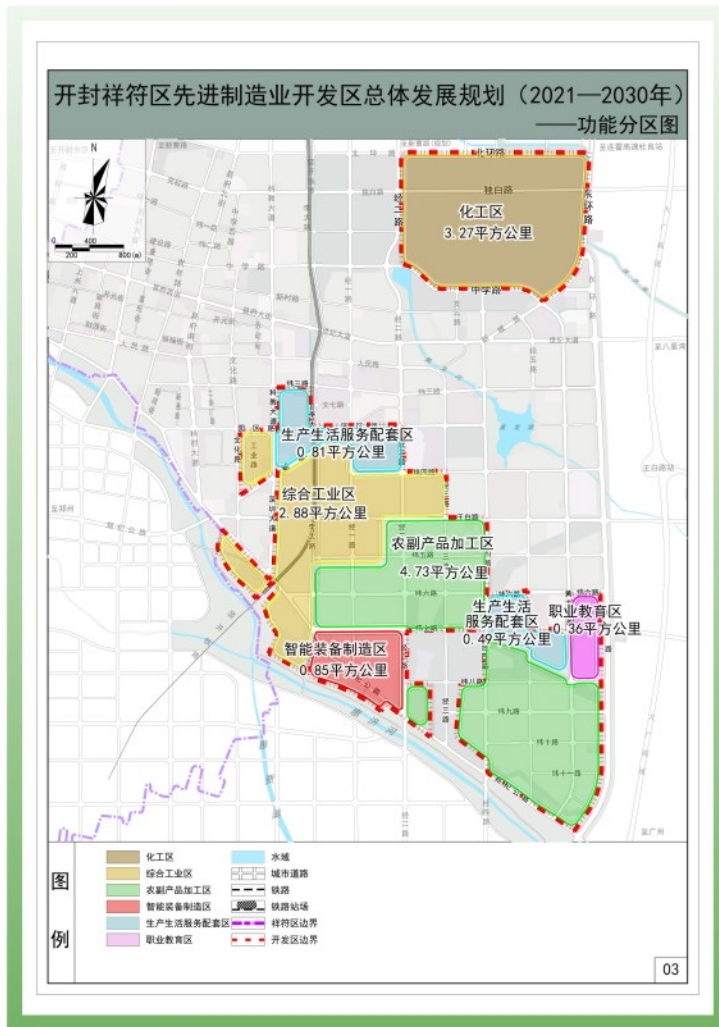
祥符区聚焦智能制造产业依托晋开百万吨总氨项目，引进上下游企业，形成超百亿的高端化工产业集群；依托宏达拨叉集团，引进一批汽车零部件生产企业，建设汽车零部件产业基地；依托青天伟业，引进仪表链条企业，打造智能仪表产业园，形成超百亿的智能制造产业集群。谋划建设了180亩的流量仪表产业园，380亩的智能制造产业园。聚焦农副产品深加工产业。依托禾丰肉鸡，打造了集种鸡养殖、加工、冷藏、熟食为一体的肉鸡产业链；依托龙大植物油、一见钟情花生饮品，打造了植物油压榨、存储、分装、花生蛋白饮料为一体的花生产业链；依托都市食品产业港、华闽食品，打造了集都市休闲食品、面制食品、方便食品为一体的都市食品产业链。雨润集团投资32亿元、正大集团投资34亿元建设的百万头生猪全产业链项目的先后开工。农副产品加工区规划面积4.73平方公里，建成面积2.8平方公里。聚焦战略新兴产业。依托5G数字经济产业园、清祥基地、汇农链等新兴产业平台，大力发展节能环保、数字信息、新能源、新材料等新兴产业，其中，5G数字经济产业园占地308亩，核心功能数字展示体验区和教育培训区、区域总部办公区、高端商务接待区、人才公寓等均已建成投运。

Regional overview

Xiangfu District is located in Zhengzhou Metropolitan Circle and the core area of Zhengzhou (Old Town+Zhengdong New District)-Kaifeng (Old Town+Bianxi New District)-Zhengzhou Airport Economic Zone Golden Triangle. With a total area of 1302 square kilometers, the zone has jurisdiction over 14 townships, 1 sub district office, 1 provincial advanced manufacturing development zone, 1 provincial cultural tourism development pilot zone, and 1 national industry city integration demonstration zone. Xiangfu District has a total population of 820000. The area is 50 kilometers away from the provincial capital Zhengzhou in the west and 64 kilometers away from Xinzheng Airport in the south. Zhengzhou Xuzhou High speed Railway, Lanzhou-Lianyungang Railway, Zhengzhou-Minquan Expressway Expressway, Lianyungang-Khorgos Expressway and Daqing-Guangzhou Expressway pass through the area. Xiangfu District is gradually becoming the golden node for the development of Zhengzhou Kaifeng Lankao's integration.

Industrial development

Xiangfu District focuses on intelligent manufacturing industry, relying on Jinkai million ton total ammonia project, and introduces upstream and downstream enterprises to form a high-end chemical industry cluster of more than 10 billion yuan. Relying on Hongda Fork Group, the district has introduced a number of auto parts manufacturers to build an auto parts industry base. The district also relies on Qingtian Weiye to introduce instrument chain enterprises, build an intelligent instrument industrial park, and form an intelligent manufacturing industrial cluster of more than 10 billion yuan. Xiangfu District plans to build a 180 mu flow instrument industrial park and a 380 mu intelligent manufacturing industrial park. In the agricultural and sideline products deep processing industry. Relying on Hefeng broilers, the district has built a broiler industry chain integrating breeding, processing, refrigeration and cooked food; Relying on Longda vegetable oil and peanut drink at first sight, the district has built a peanut industry chain integrating plant oil pressure pressing, storage, subpackage and peanut protein drink; Relying on the urban food industry port and Huamin food, an urban food industry chain integrating urban leisure food, flour food and convenient food has been built. The whole industrial chain project of millions of pigs invested by Yurun Group with 3.2 billion yuan and Zhengda Group with 3.4 billion yuan has been started successively. The agricultural and sideline products processing zone in Xiangfu District has a planned area of 4.73 square kilometers and a built area of 2.8 square kilometers. In terms of emerging industries, relying on 5G digital economy industrial park, Qingxiang base, Huinong chain and other emerging industry platforms, Xiangfu District develops energy conservation and environmental protection, digital information, new energy, new materials and other emerging industries. Among them, the 5G Digital Economy Industrial Park covers an area of 308 mu, and the digital exhibition and experience area, education and training area, regional headquarters office area, high-end business reception area, talent apartment, etc. have been completed and put into operation.

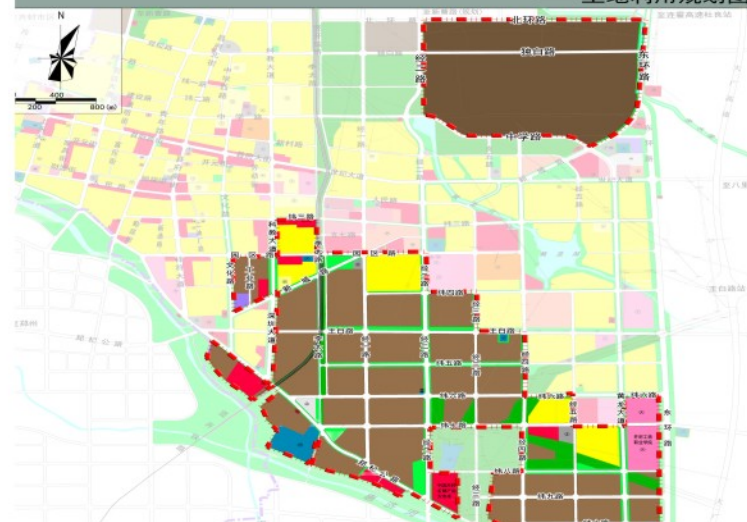




祥符区先进制造业开发区。位于祥符城区东部，规划面积13.39平方公里，分为南、北两个片区。其中，北部片区规划用地面积3.19平方公里，位于祥符区东北部，主要包括以晋开集团为主的高端化工区；南部片区规划用地面积10.12平方公里，位于祥符区东南部，主要包括农副产品加工区、智能装备制造区以及综合工业区。开发区内已建成区域的用地面积约6.2平方公里，先后被评为河南省“十快”产业集聚区、5A级最具投资价值营商环境集聚区、河南十佳发展战略产业集聚区和河南省“二次创业”标杆。

目前，开发区正在围绕晋开化工做强化工业产业，做大产业规模，做优产业结构，做强产业集群，推动产业高质量发展，推动园区产业升级，持续延链补链，带动和服务上下游行业发展，打造河南省煤化工产业重要基地；加强农副产品加工产业，围绕“农”字号项目做文章，以龙大植物油、华闽食品、正大集团等为依托，大力发展农副产品深加工，年产值超百亿的食品加工产业集群正在加快形成，打造中部地区农副产品加工重要基地；优化产业结构，注入新经济活力，打造先进智能装备制造业和现代服务业融合示范园区。

开封祥符区先进制造业开发区总体发展规划（2021—2030年）
——土地利用规划图



Xiangfu Advanced Manufacturing Development Zone. The development zone is located in the east of Xiangfu urban area, with a planned area of 13.39 square kilometers, which is divided into two areas: the south and the north. Among them, the northern area, with a planned land area of 3.19 square kilometers, is located in the northeast of Xiangfu District, mainly including the high-end chemical industry zone dominated by Jinkai Group. The southern area, with a planned land area of 10.12 square kilometers, is located in the southeast of Xiangfu District, mainly including agricultural and sideline products processing zone, intelligent equipment manufacturing zone and comprehensive industrial zone. The completed area in the development zone covers an area of about 6.2 square kilometers, and has been successively rated as Henan's "Ten Fast" Industrial Cluster, 5A level Business Environment Cluster with the Most Investment Value, Henan's Top Ten Strategic Industrial Cluster and Henan's "Second Entrepreneurship" Benchmark.

At present, the development zone is focusing on Jinkai Chemical Industry to strengthen the chemical industry, expand the industrial scale, optimize the industrial structure, and strengthen the industrial cluster, so as to promote the high-quality development of the industry, promote the industrial upgrading of the park, continue to extend the chain to drive and serve the development of upstream and downstream industries, and build an important base of coal chemical industry in Henan Province. The development zone also strengthens the agricultural and sideline product processing industry, and develops the deep processing of agricultural and sideline products relying on Longda vegetable oil, Huamin Food, Chia Tai Group, etc. The food processing industry cluster with an annual output value of more than 10 billion is accelerating to form, creating an important base for agricultural and sideline product processing in the central region. The development zone also optimizes the industrial structure and creates a demonstration park integrating advanced intelligent equipment manufacturing industry and modern service industry.



城乡一体化示范区

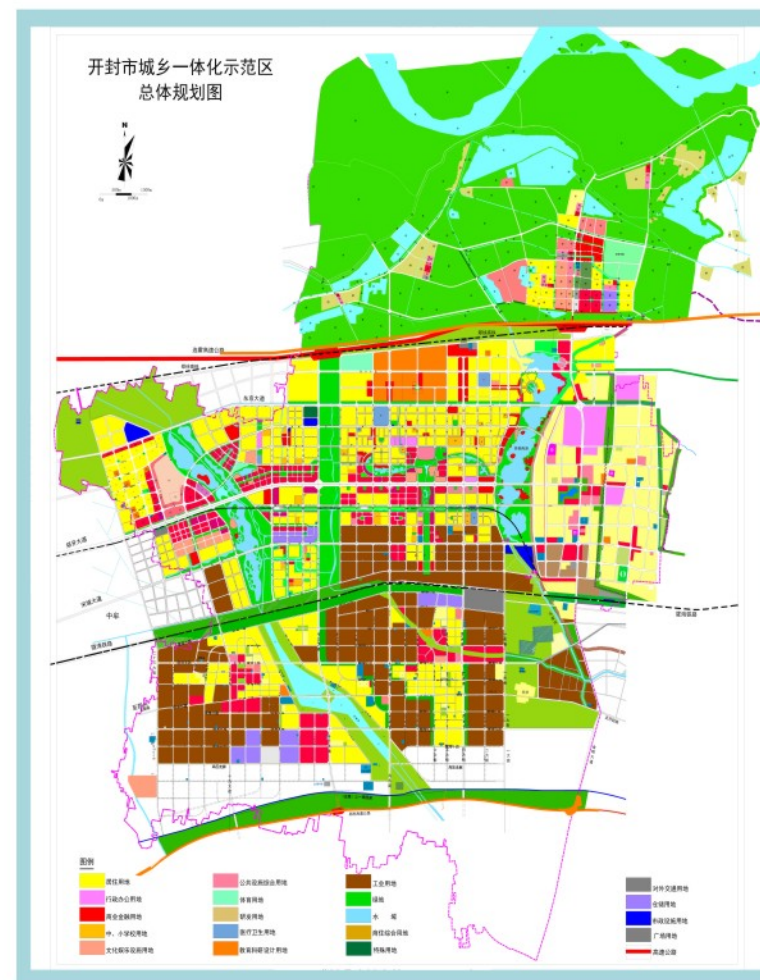
URBAN RURAL INTEGRATION DEMONSTRATION AREA

区域概况

开封市城乡一体化示范区地处郑州大都市区核心支点，自贸港“金三角”中心地带，不仅是中部地区对外开放和郑开同城化的排头兵，也是传承黄河文化，实施黄河流域生态保护和高质量发展等重大战略的桥头堡。示范区地处省会郑州和开封老城区之间，东起中心城区大梁门，西临郑州中牟，南至郑民高速，北依黄河大堤，作为郑州和开封的连接点，区位优势十分明显。现辖8个乡（场）、街道，总人口40万，规划面积287.5平方公里。

产业发展

在市委、市政府的坚强领导下，示范区立足“西强”“北美”发展定位，深入贯彻市委“制造立市”的战略部署，牢固树立“项目为王、产业为基、制造为要”发展理念，明确主导产业和招商主攻方向，聚焦汽车及零部件、装备制造、食品及农副产品深加工等百亿级产业集群建设，狠抓项目招商，强力推进示范区产业经济高质量发展。



Regional overview

Kaifeng Urban Rural Integration Demonstration Zone is located in the core pivot of Zhengzhou metropolitan area and the center of the "Golden Triangle" of the free trade port. The demonstration area is not only a pioneer in the opening up of the central region and the integration of Zhengzhou and Kaifeng, but also a bridgehead for inheriting the Yellow River culture and implementing major strategies such as ecological protection and high-quality development of the Yellow River basin. The demonstration area is located between the provincial capital Zhengzhou and the old urban area of Kaifeng. It starts from Daliangmen in the central urban area in the east, borders Zhengzhou Zhongmu in the west, ends at Zhengmin Expressway in the south, and adjoins the Yellow River levee in the north. As the connecting point between Zhengzhou and Kaifeng, this area has obvious regional traffic advantages. The demonstration area now governs 8 townships (fields) and streets, with a total population of 400,000 and a planned area of 287.5 square kilometers.

Industrial development

Under the strong leadership of the Kaifeng Municipal Party Committee and the Kaifeng Municipal Government, the demonstration area focuses on the construction of 10 billion level industrial clusters such as automobile and parts, equipment manufacturing, food and agricultural by-products deep processing, pays close attention to project investment, and promotes the high-quality development of the industrial economy in the demonstration area.

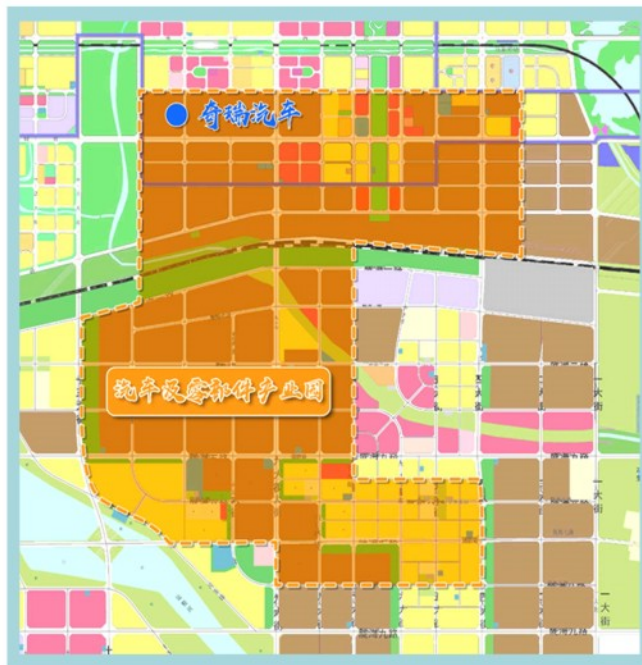
汽车及零部件产业。开封汽车零部件产业园为郑开汽车产业带重要一翼，为河南省政府公布的第四批省级汽车及零部件出口基地，规划面积15.2平方公里，围绕汽车“新四化”发展趋势，努力在产业规模、下一代汽车产业链、汽车产业技术创新、汽车服务业等方面实现新突破，力争到十四五末建成500亿规模汽车产业集群。现园区已入住了奇瑞汽车、住友电工、河钢集团、亚普油箱、平原非标、江苏超力等一批500强和行业龙头企业，已入住汽车及零部件企业近百家，形成了与郑州汽车工业差异化发展、互补配套的产业体系。

高端装备制造产业。示范区已形成以永煤开封空分、开元空分、黄河空分、东京空分等龙头企业为支撑，产业链较完整的产业链较完整的产业集群；已建有中联重科开封工业园，现已实现谷物联合收获机、玉米联合收获机、大中型拖拉机等农业机械产品的研发、生产、制造、销售及服务“一条龙”全过程；正在培育以开阀门、开封高中压阀门等为龙头的阀门产业；已引入奔腾激光为龙头的激光装备制造产业，以及以大唐控股、金风风电为龙头的风电装备制造产业，正在积极推进与华能、上海电气、唐山海泰等风电企业的对接洽谈。

服务配套

强化政策保障。2022年出台了《扩大对外开放促进产业高质量发展的若干措施》等产业发展支持政策，在土地供应、经营贡献等15个方面提供最大化扶持，尤其对投资体量大、科技含量高、示范带动强的优质项目灵活采取“一事一议”“一企一策”方式予以支持，全力推动项目招商总量、质量、结构和效益协调统一。

优化营商环境。建立了“8+4”工作机制，助企工作突出“8个分包”、做到“4个解决”，以问题解决率、企业满意率作为衡量活动成效的重要指标。每季度举行政银企座谈会，宣讲融资金融政策，解决融资难、融资贵等问题。设立专项奖励资金，对在经济工作中做出特殊贡献的企业给予奖励资金。



Automobile and parts industry. Kaifeng Auto Parts Industrial Park is an important part of Zhengkai Auto Industrial Belt and the fourth batch of provincial auto and parts export bases announced by Henan Provincial Government. The planned area of the industrial park is 15.2 square kilometers. The industrial park strives to achieve new breakthroughs in industrial scale, next generation automobile industry chain, automobile industry technology innovation, automobile service industry, etc., and strives to build a 50 billion automobile industry cluster by the end of the 14th Five Year Plan. A group of top 500 and leading enterprises in the industry have settled in the industrial park, including Chery Automobile, Sumitomo Electric, Hegang Group, Yapu Fuel Tank, Pingyuan Nonstandard, Jiangsu Chaoli, etc. Nearly 100 automobile and parts enterprises have settled in the industrial park, forming an industrial system with differentiated development and complementary matching with Zhengzhou automobile industry. High end equipment manufacturing industry. The demonstration zone has formed an industrial cluster with relatively complete industrial chain supported by leading enterprises such as Yongmei Kaifeng Air Separation Plant, Kaiyuan Air Separation Plant, Huanghe Air Separation Plant and Tokyo Air Separation Plant. The demonstration area has built Zoomlion Kaifeng Industrial Park, which has realized the research, development, production, manufacturing, sales and service of agricultural machinery products such as grain combine harvesters, corn combine harvesters, large and medium-sized tractors. The demonstration area is cultivating a valve industry led by valve opening, Kaifeng high and medium pressure valves, etc. The demonstration zone has introduced the laser equipment manufacturing industry led by Pentium Laser, and the wind power equipment manufacturing industry led by Datang Holding and Goldwind Wind Power. It is promoting the docking and negotiation with Huaneng, Shanghai Electric, Tangshan Haitai and other wind power enterprises.

Services

Strengthen policy guarantee. In 2022, a series of industrial development support policies were introduced to provide maximum support in 15 aspects, such as land supply and business contribution. In particular, flexible support was given to high-quality projects with large investment volume and high scientific and technological content, and efforts were made to promote the coordination and unification of the total amount, quality, structure and benefits of project investment.

Optimize the business environment. The government, banks and enterprises will hold symposiums every quarter to publicize the financing and financial policies, so as to solve the problems of financing problems. Set up special reward funds to reward enterprises that have made special contributions to economic work.



顺河回族区 SHUNHE HUI DISTRICT

县区概况

顺河回族区位于地处开封市区东北部，因古老的惠济河纵贯辖区、回族群众聚居而得名，是全国五个少数民族城区之一，总面积87平方公里，总人口近30万，有汉、回、满、蒙等20个民族。

主导产业及龙头企业情况

（一）储能炭新材料

围绕依托现有支柱企业开封平煤新型炭材料科技有限公司、河南开炭新材料设计研究院，培育壮大战略新型炭材料产业，拟谋划打造新型炭材料及储能产业园项目。

该项目规划选址位于汴东先进制造业开发区内开封平煤新型炭材料科技有限公司北侧范围内，规划占地面积约3400亩，东临大广高速和310国道，南临陇海铁路，北临连霍高速，交通畅通快捷，区位优势明显。本项目在开封炭素公司现有产业基础上，聚焦新材料和储能产业，分三期打造国家级储能新材料产业园。一期在原畅丰车桥院内475亩场地上已入驻全钒液流电池、石墨烯导热膜、炭新材料双极板等项目。

（二）龙头企业情况

开封平煤新型炭材料有限公司隶属于中国平煤神马集团，是一家专业生产超高功率石墨电极的高新技术企业。产品系列覆盖超高功率、高功率和普通功率石墨电极，广泛应用于电弧炉炼钢和矿热炉冶炼等。

中国平煤神马集团设立河南开炭新材料设计研究院有限公司，主要服务于集团新能源新材料板块，致力于新能源、新材料尤其是炭材料方面的研究，包括储能新材料、结构炭材料、功能炭材料、其它新型炭材料。

（三）招商重点和方向

重点引进氢燃料电池、全钒液流电池、储能配套产品、石墨烯导热膜、石墨烯超级电容、石墨烯导电剂、碳纳米管导电剂、3D打印、注塑异形件、碳基高端电刷、风机电刷、石墨模具、高铁受电弓、石墨电极、石墨化阴极、炭素阳极等相关产品生产企业。

基础设施

一是区内高速公路、铁路、公路密集分布，东临大广高速，西与郑开大道相接，南有陇海铁路、郑民高速，北有连霍高速、郑徐高铁纵贯东西，距离京港澳高速公路20余公里，交通畅通快捷；二是汴东先进制造业开发区是国家增量配电业务河南省七个改革试点之一，结合辖区2×60万千瓦的火电厂，大大降低入驻企业用电成本，中石油宝石化地热能资源、中电投公司东区供热管线覆盖，充分满足企业生产、生活需要；三是教育医疗资源丰富，辖区内有市重点求实中学、646中学、顺河区实验中学、开联小学、电厂小学、宴台河小学和集小学、初中、高中于一体的东信北大培文实验学校等多所学校以及开封市人民医院和646医院两所医院，具备非常便捷的就医条件；四是经过土地、规划调整，工业建设用地储备充裕，亟待项目入驻。



Overview

Shunhe Hui District is located in the northeast of Kaifeng City. It gets its name because the ancient Huiji River runs through the district and Hui people live together. It is one of the five ethnic minority urban areas in China, with a total area of 87 square kilometers, and a total population of nearly 300,000, and 20 ethnic groups, including Han, Hui, Manchu, and Mongolian.

Leading industries and leading enterprises

(1) New carbon materials for energy storage

Relying on the existing pillar enterprises Kaifeng Pingmei New Carbon Materials Technology Co., Ltd. and Henan Kaitan New Materials Design and Research Institute, we will cultivate and expand the strategic new carbon materials industry, and plan to build a new carbon materials and energy storage industrial park project.

The planned site of the project is located in the north of Kaifeng Pingmei New Carbon Materials Technology Co., Ltd. in the Biandong Advanced Manufacturing Development Zone. The planned area is about 3400 mu. The project is adjacent to Daguang Expressway and 310 National Highway in the east, Longhai Railway in the south, and Lianhuo Expressway in the north. The traffic is smooth and fast, with obvious location advantages. Based on the existing industry of Kaifeng Carbon, the project focuses on new materials and energy storage industry and builds a national energy storage new material industrial park in three phases. In the first phase, 475 mu of site in the former Changfeng Axle yard has been occupied with projects such as all-vanadium liquid flow battery, graphene thermal conductive film and carbon new material bipolar plate.

(2) Leading enterprise situation

Relying on the existing pillar enterprises Kaifeng Pingmei New Carbon Materials Technology Co., Ltd. and Henan Kaitan New Materials Design and Research Institute, we will cultivate and expand the strategic new carbon materials industry, and plan to build a new carbon materials and energy storage industrial park project.

The planned site of the project is located in the north of Kaifeng Pingmei New Carbon Materials Technology Co., Ltd. in the Biandong Advanced Manufacturing Development Zone. The planned area is about 3400 mu. The project is adjacent to Daguang Expressway and 310 National Highway in the east, Longhai Railway in the south, and Lianhuo Expressway in the north. The traffic is smooth and fast, with obvious location advantages. Based on the existing industry of Kaifeng Carbon, the project focuses on new materials and energy storage industry and builds a national energy storage new material industrial park in three phases. In the first phase, 475 mu of site in the former Changfeng Axle yard has been occupied with projects such as all-vanadium liquid flow battery, graphene thermal conductive film and carbon new material bipolar plate.

(3) The focus and direction of investment promotion

Introducing manufacturers of hydrogen fuel cells, vanadium flow batteries, energy storage supporting products, graphene thermal conductive films, graphene supercapacitors, graphene conductive agents, carbon nanotube conductive agents, 3D printing, injection molded parts, carbon based high-end brushes, wind turbine brushes, graphite molds, high-speed pantograph, graphite electrodes, graphitized cathodes, carbon anodes and other related products is the focus.

Infrastructure

Firstly, expressways, railways and highways are densely distributed in the area, bordering Daguang Expressway in the east, connecting Zhengkai Avenue in the west, Longhai Railway and Zhengmin Expressway in the south, Lianhuo Expressway and Zhengxu High speed Railway in the north running from east to west, and the distance from Beijing-Hong Kong-Macao Expressway is more than 20 kilometers, so the traffic is smooth and fast; Secondly, the Biandong Advanced Manufacturing Development Zone, one of the seven reform pilots of the national incremental distribution business in Henan Province, combined with the 2×600,000 kilowatt thermal power plant, has greatly reduced the cost of electricity for enterprises settled in the park. The geothermal energy resources of CNPC Baobaohua and the heating pipelines in the east area of CPI fully meet the production and living needs of enterprises; Thirdly, there are abundant education and medical resources in the area, such as the city's key Qishi Middle School, 646 Middle School, Shunhe District Experimental Middle School, Kai Lian Primary School, Power Plant Primary School, Yantaihe Primary School and Dongxin Beida Peiwen Experimental School which integrates elementary school, middle school and high school and other schools, as well as Kaifeng People's Hospital and 646 Hospital two hospitals, with very convenient conditions for schooling and medical treatment; Fourth, through land and planning adjustments, industrial construction land reserves are abundant, and projects are urgently needed.



Overview

Longting District is located in the north-central part of Kaifeng City, governing two townships, four street offices, 65 community neighborhood committees, with a total area of 91.51 square kilometers and a total population of 210,000. As a cultural, commercial and tourism area positioned by the municipal party committee and government, is the central district of Kaifeng's commercial and tourism Longting District is the center of business and tourism in Kaifeng, the first batch of provincial-level all-area tourism demonstration units, and also the "two districts" of provincial two-star service industry. Longting Station of Lian Huo Expressway is about to be completed and opened to traffic. Lian Huo Expressway, which runs through the whole territory, is connected with Anluo, Ri'nan, Ashen, and Jingzhu Expressway, and forms a three-dimensional transportation network with Xinzheng International Airport, Longhai, Beijing Guangzhou, Beijing Jiulong Railway, and 106 and 301 National Roads. It takes 40 minutes to get to Xinzheng International Airport, and 30 minutes

to get to Zhengzhou on Zhengkai Avenue. In particular, the Kailiu Road widening and reconstruction project and the official launch of the surrounding area development project have become a major landmark project for the municipal party committee and government to build a "North Glorifying" and "Center Protecting" urban development spatial pattern, which will certainly make our development cornerstone more solid and our advantages more significant. The Longting district is full of attractions, including Dragon Pavilion Park, Millennium City Park, Shanshan'gan Guild Hall, Hanyuan Stele Forest, Kaifeng City Wall, Longsui Mountain/ The Song Dynasty of Kungfu City and other places of interest, as well as the Yellow River Scenic Area, Liuchi, Panjiahu, Yangjiahu and other natural landscapes. The beautiful environment and the human and natural landscape complement each other, which has a certain impact in the province and even in the country.

Industrial Development

Longting District focuses on " life service industry to enhance, production service industry to break through ", vigorously developing the modern service industry, and creating a modern service industry system with a double engine development of the life service industry blossoming everywhere and the production service industry taking root. Firstly, the living service industry should be transformed and upgraded: consolidating and improving the traditional trade industry, and vigorously attracting large-scale commercial complex projects. The healthcare industry should be vigorously developed, medical and healthcare projects should be precisely recruited, and a comprehensive community integrating home care, community medical care, senior citizens' university, senior citizens' leisure and entertainment center should be built. Accelerate the development of the tourism industry, promote the establishment of the Songdu Imperial City Tourist Resort as a national tourist resort, and strive to create a provincial tourism demonstration area. Second, the productive service industry should make breakthroughs: take the construction of professional parks as an important carrier of the productive service industry, adhere to the park industry as the pillar industry, to create an industrial cluster platform. Based on the revitalization of idle resources, we will build two major industrial parks, namely, construction and human resources. Vigorously attract enterprises to the park, meet the conditions for opening the park as soon as possible, and the first batch of enterprises will settle in.

龙亭区

LONGTING DISTRICT

区域概况

龙亭区位于开封市中北部，辖两个乡、四个街道办事处，65个社区居委会，总面积91.51平方千米，总人口21万人。作为市委市政府定位的文化商贸旅游区，龙亭区是开封市商贸旅游的中心区，是首批省级全域旅游示范区创建单位，也是省二星级服务业“两区”。连霍高速公路龙亭站即将建成通车，贯穿全境的连霍高速公路与安罗、日南、阿深、京珠高速相连，和新郑国际机场，陇海、京广、京九铁路，106、301国道形成了立体交通网。40分钟可以直达新郑国际机场，郑开大道30分钟可以直达郑州，尤其是开柳路拓宽改造暨周边片区开发项目的正式启动，已成为市委市政府构建“北美”“中保”城市发展空间格局的重大标志性工程，必将使我们的发展基石更加牢固、优势更加显著。龙亭辖区景点云集，有龙亭公园、清明上河园、山陕甘会馆、翰园碑林、开封城墙、万岁山等名胜古迹和黄河游览区、柳池、潘家湖、杨家湖等自然景观。环境优美，人文自然景观交相辉映，在全省乃至全国都有一定的影响。

产业发展

龙亭区围绕“生活性服务业抓提升，生产性服务业抓突破”，大力发展现代服务业，打造生活性服务业遍地生花、生产性服务业生根发芽，双引擎发展的现代服务业产业体系。

一是生活性服务业抓转型提升：巩固提升传统商贸业，大力招引大型商业综合体项目。大力发展康养产业，精准招引医养结合项目，打造集颐养、社区医疗、老年大学、老年休闲娱乐中心为一体的综合性社区。加快发展旅游产业，推动宋都皇城旅游度假区创建国家级旅游度假区，争创省级全域旅游示范区。

二是生产性服务业抓突破：将专业园区建设作为生产性服务业重要载体，坚持以园区产业为支柱产业，打造产业集聚平台。立足盘活闲置资源，打造建筑和人力资源两大产业园。大力招引入园企业，尽快达到开园条件，第一批企业实现入驻。





特色商业区

龙亭区宋都名胜旅游特色商业区，是2012年河南省人民政府批准的省定服务业“两区”。特色商业区范围：东至解放路，南至东大街、西大街、西门大街，西至内顺城路及北延，北至北顺城路，龙亭西路北延、龙亭北路、体育路、铁塔西街、豆腐营北街、龙亭北路，规划面积3.26平方公里（含水域面积约1平方公里）。功能定位为：中原经济区城市休闲旅游示范区、开封市文化旅游产业转型升级先导区、宋文化传承创新核心区。经过几年的建设，龙亭区宋都名胜旅游特色商业区已形成特色鲜明、优势各异、活力迸发的宋文化体验区、民俗文化特色商业区、商贸休闲文化区、皇家文化体验区、龙亭湖风景游览区五大功能区。

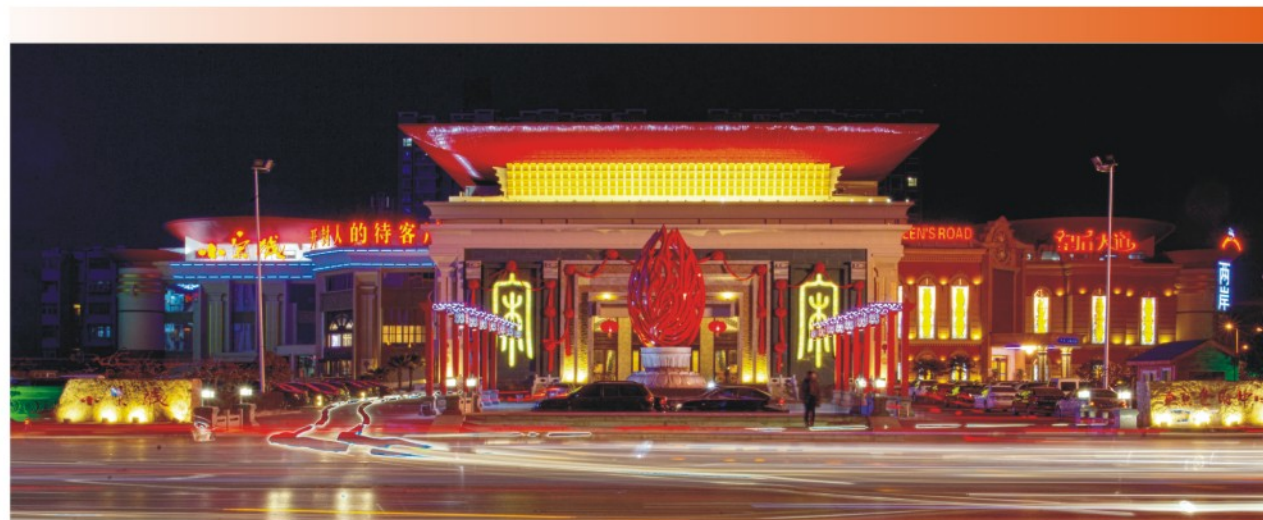
2015年，龙亭区特色商业区被河南省商务中心区和特色商业区发展联席会议办公室授予一星级服务业“两区”称号。2016年、2017年和2019年龙亭区特色商业区被河南省商务中心区和特色商业区发展联席会议办公室授予二星级服务业“两区”称号。

服务配套

1. 产业发展取得新进展。三次产业由2016年末的3.7:20.1:76.2调整为1.3:11.6:87.1，第三产业比重上升10.9个百分点。五年来，累计引进5000万元以上项目51个，其中亿元以上项目44个。累计实施市重点项目93个，完成投资470亿元，其中现代服务业项目投资占比25%以上。七盛角提质改造、960非遗文化创意园、丹尼斯百货、泰邦健康公寓等一大批重大结构调整项目在龙亭落地生根，为经济持续发展积蓄了动能。

Featured Business District

Longting District Songdu Tourist Attraction Featured Business District is a provincial service industry "two districts" approved by Henan Provincial People's Government in 2012. Scope of the characteristic business district: east to Jiefang Road, south to East Street, West Street, West Gate Street, west to Inner Shuncheng Road and its northern extension, north to North Shuncheng Road, the north extension of Longting West Road, North Longting Road, Sports Road, Tieta West Street, Tofu Ying North Street, North Longting Road, with a planned area of 3.26 square kilometers (including about 1 square kilometer of water area). The functional orientation is Central Plains Economic Zone Urban Leisure Tourism Demonstration Zone, Kaifeng Cultural Tourism Industry Transformation and Upgrading Pilot Zone, and Song Culture Inheritance and Innovation Core Zone. After several years of construction, the Songdu Tourist Attraction Featured Business District in Longting District has formed five functional areas, namely, the Song Culture Experience Area, the Folk Culture Featured Commercial Area, the Commercial Leisure Culture Area, the Royal Culture Experience Area, and the Longting Lake Scenic Area, with distinctive features, different advantages, and a burst of vitality.



Supporting services

1. New progress has been made in industrial development. The three industries were adjusted from 3.7:20.1:76.2 at the end of 2016 to 1.3:11.6:87.1, with the proportion of the tertiary industry rising by 10.9 percentage points. Over the past five years, 51 projects worth more than 50 million yuan have been introduced, including 44 projects worth more than 100 million yuan. The cumulative implementation of 93 key projects of the city, completed investment of 47 billion yuan, of which the investment in modern service industry projects accounted for more than 25%. A large number of major structural adjustment projects, such as Qishengjiao Quality Improvement and Reconstruction, 960 Intangible Cultural Heritage Creative Park, Dennis Department Store, and Taibang Health Apartment, have taken root in Longting, accumulating momentum for sustainable economic development.

2. 城乡面貌展现新颜值。13个棚户区、城中村房屋征收项目全部清零，建成各类保障性住房1.2万套，大批群众喜迁新居。东京大道拓宽改造、迎宾路北延、沿黄大道、黄河大街北延等道路相继建成通车。西北湖湿地公园、“一渠六河”龙亭段、城墙贯通龙亭段建成开放，成功入选首批省级全域旅游示范区创建单位，城市实现美丽蝶变。实施农村市场化保洁，“两容两貌”大幅改善，完成国土绿化1.81万亩，农村居民幸福指数不断提升。

3. 改革创新迈出新步伐。“放管服效”改革持续深化，“一网通办”、“全市通办”全面推行。深化商事制度改革，荣获全省商事制度改革企业登记先进窗口。五年来，新增各类市场主体9955家，年均增长23.18%。“一中心四平台”全市首批试点建成使用，中央政法委书记郭声琨给予高度评价，基层社会治理工作进入全新发展阶段。



4. 人民福祉达到新水平。人均可支配收入达31223.3元，是五年前的1.4倍。城乡低保标准实现五连增。五年来，累计投入教育经费3.47亿元，普惠性幼儿园覆盖率提高15个百分点，公办园在园幼儿占比提高16个百分点。荣获国家级义务教育发展基本均衡县（区）、省级食品安全示范区等一系列荣誉。

5. 项目保障达到新高度。龙亭区制定出台了重点项目领导分包、首席服务官、月度考核等工作机制，为全区各部门服务和推进项目建设工作提供了制度保障。大力推行工程施工许可“一件事一次办”，确保一般性企业投资项目开工前审批“最多跑一次”，实现“拿地即开工”。以申报办理预开工报告书为抓手，领办代办项目所需各类前期手续，主动帮助企业解决项目开工前的各项制约因素，确保项目按照节点推进的基础上争取提前开工。

2. The urban and rural areas show a new look. Thirteen housing expropriation projects in shantytowns and villages in cities were cleared, 12000 sets of affordable housing were built, and a large number of people moved to new homes. The widening and reconstruction of Dongjing Avenue, the north extension of Yingbin Road, the north extension of Yanhuang Avenue and Yellow River Avenue have been completed and opened to traffic. The Northwest Lake Wetland Park, the Longting Section of "One Canal and Six Rivers", and the Longting Section through the city wall have been completed and opened to the public, and have been successfully selected as the first batch of provincial tourism demonstration areas, making the city a beautiful place. We implemented market-oriented cleaning in rural areas, significantly improved the "two accommodations and two looks", completed the greening of 18100 mu of land, and constantly improved the happiness index of rural residents.

3. Take new steps in reform and innovation. The reform of "release, management and serving efficiency" has been continuously deepened, and "One Network Access" and "One City Access" have been comprehensively implemented. Deepen the reform of the commercial system, and won the title of the provincial advanced window for enterprise registration of commercial system reform. In the past five years, 9955 new market entities of various types have been added, with an average annual growth of 23.18%. The first batch of "one center and four platforms" pilot projects in the city were completed and put into use, and Guo Shengkun, Secretary of the Central Political and Legal Commission, spoke highly of the work of grass-roots social governance into a new stage of development.



4. People's well-being has reached a new level. The per capita disposable income reached 31,223.3 yuan, 1.4 times that of five years ago. The minimum subsistence allowances for urban and rural residents increased for five consecutive years. Over the past five years, a total of 347 million yuan has been invested in education, the coverage of inclusive kindergartens has increased by 15 percentage points, and the percentage of children in public kindergartens has increased by 16 percentage points. It has won a series of honors such as a county (district) with basically balanced development of national compulsory education and a provincial food safety demonstration area.

5. The project guarantee has reached a new height. Longting District has formulated and introduced working mechanisms such as leading subcontracting, chief service officer, and monthly assessment for key projects, providing institutional guarantee for all departments in the district to serve and promote project construction. We will vigorously promote "one thing at a time" for project construction permits, ensure that general enterprise investment projects are approved "one stop, one trip, one paper" before commencement, and realize "starting with land acquisition". We will take the declaration and handling of the pre-commencement report as the starting point, take the lead in handling all kinds of early formalities required for the project, actively help enterprises solve various constraints before the project commencement, and ensure that the project starts ahead of schedule based on the progress of the node.



鼓楼区

GULOU DISTRICT

开封是八朝古都，中国优秀旅游城市，鼓楼区位于市区中心，因明建清修的“钟鼓楼”而得名，是全市文化、旅游、商贸中心。总面积58.68平方公里，辖6个街道办事处和2个涉农办事处，42个社区，常住人口15.76万人。

近年来，鼓楼区牢固树立“项目为王”的理念，按照“16136”总体工作思路，抢抓黄河流域生态保护和高质量发展、大运河文化带建设、宋都古城保护与修缮规划、郑开同城化等国家、省市重大战略机遇，按照“南融、中保”的城市空间总体布局，聚焦提档升级产业结构，深挖高质量发展潜力，在文旅商贸产业、新型数字化建筑装配产业、生物医药产业等方面实现突破，出台了招商引资若干措施等优惠政策，营商环境持续向好。

一、文旅商贸产业

鼓楼区一直是宋都古城的文化核心，是独具魅力的钟鼓文化、宗教文化、府衙文化、古街文化、运河文化和城墙文化的集中展示区，鼓楼街、寺后街、中山路等精品街、特色街“旧貌换新颜”，王大昌、第一楼、又一新、晋阳豫等百年老字号焕发新的活力，文化品牌价值不断彰显。依托独特的区位优势和丰富的资源禀赋，以引进孕育文化创意项目创新发展现代服务业，传承老字号、文化遗存做大做强传统商贸服务业，形成文化+旅游产业增量突破和极具内生动力的增长中心。特色商业区作为服务业发展的主战场、主平台，不断强化特色商业区服务功能，持续加快特色化、专业化、集聚化、智能化步伐，连续五年获得全省“十强”“十先”特色商业区称号、享有“中国著名商业街”、第一批省级历史文化街区、河南省三星级服务业“两区”、首批省级示范步行街街区试点、国家级夜间文旅消费集聚区等荣誉称号。

Kaifeng is an ancient capital of the Eight Dynasties and an excellent tourist city in China. Located in the center of the urban area, the Gulou District is named after the "Bell and Drum Tower" built and renovated in the Ming Dynasty. It is the city's cultural, tourism and trade center. With a total area of 58.68 square kilometers, it has jurisdiction over 6 sub district offices, 2 agriculture related offices, 42 communities and a permanent population of 157600.

In recent years, Gulou District has firmly established the concept of "project as the king". In accordance with the overall working idea of "16136", it has seized such national, provincial and municipal major strategic opportunities as ecological protection and high-quality development of the Yellow River basin, the construction of the Grand Canal cultural belt, the planning for the protection and repair of the ancient city of the Song Dynasty, and the integration of Zhengzhou and Kaifeng into the city. In accordance with the overall layout of urban space of "southern integration and central protection", it has focused on upgrading the industrial structure and tapping the potential of high-quality development. We have made breakthroughs in cultural, tourism and trade industry, new digital building assembly industry, biomedicine industry, etc. We have introduced preferential policies such as investment promotion measures, and the business environment has continued to improve.

I Culture, tourism and trade industry

Gulou District has always been the cultural core of the ancient city of the Song Dynasty. It is a concentrated exhibition area of the unique charm of bell and drum culture, religious culture, government office culture, ancient street culture, canal culture and city wall culture. Gulou Street, Sihou Street, Zhongshan Road and other boutique streets and characteristic streets have "changed their old look". Wangdachang, the first floor, Youyixin, Jinyang and Henan and other hundred years old brands have shown new vitality and cultural brand value has been continuously demonstrated. Relying on the unique geographical advantages and rich resource endowments, we will introduce and nurture cultural and creative projects, innovate and develop modern service industries, inherit time-honored brands and cultural relics, and expand and strengthen traditional business service industries, forming an incremental breakthrough in culture +tourism industry and an endogenous growth center. As the main battlefield and platform for the development of the service industry, the featured business district has continuously strengthened its service functions, and continued to speed up the pace of characteristics, specialization, centralization and intelligence. It has won the title of "Top Ten" and "Top Ten" featured business district in the province for five consecutive years, and has won the title of "China's Famous Commercial Street", the first batch of provincial-level historical and cultural blocks, the "Two Zones" of three-star service industry in Henan Province, and the first batch of provincial-level demonstration pedestrian block pilots National Night Cultural Tourism Consumption Cluster and other honorary titles.



今后发展方向

以文商旅融合发展为核心，秉承在“保护中开发，在建设中保护”的理念，依托独特的区位优势和丰富的资源禀赋，引进孕育文化创意项目，大力打造文化精品，保护传承文化遗存，创新发展现代服务业，积极推进文商旅深度融合，打造文旅产业发展新高地。

一些文旅招商项目，在这里我就不一一向大家详细介绍了，大家手中的招商手册有项目的具体信息。

二、新型数字化建筑装配产业

以我区在建的河南数字化建筑产业园为抓手，打造集预制装配式建筑体系、信息化体系技术研发、建材配套和建筑装备等业态集聚形成的数字化建筑业综合示范园区。

河南建筑数字化产业园位于我市西南片区，开尉路以西、郑民高速以南，占地2160亩，总投资40亿元。以建筑产业现代化为主营，以建筑服务业和建筑金融业为核心支撑，承载覆盖包括特级资质建筑企业，建筑规划设计，预制装配式建筑体系，信息化体系技术研发，建材配套，建筑装备等业态集聚形成的建筑业综合示范园区。建成后，将覆盖开封市、郑汴新区、航空港区等80公里运距内的建筑市场，年产值600亿元，市场前景良好。按照“龙头项目引进、配套企业跟进、发展产业集群”的招商思路，主动对接，已有鸿远住工、高创住工、筑新建材、中城装配、联泽预制构件装配式建筑项目入驻，通过产业链招商，由浙江正方集团投资5亿元的正坤装配式建筑新材料项目、由河南一建投资3亿元的盛恒装配式环保建筑新材料项目等一批投资规模大、技术含量高、带动效应强的装配式建筑新材料项目正在快速推进，有望今年开工建设。

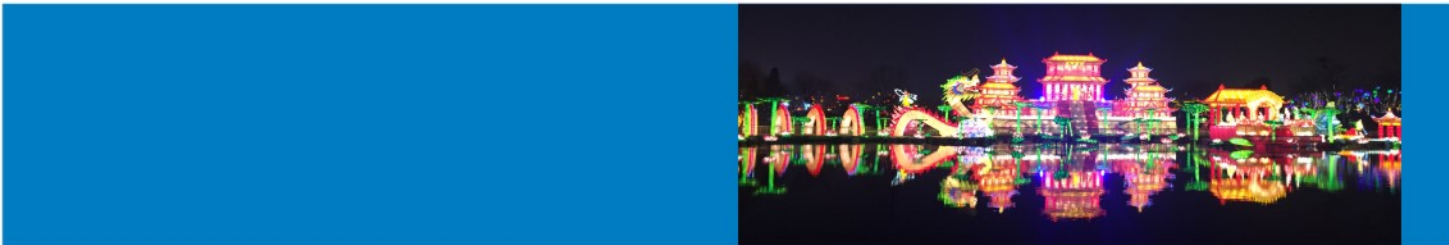
三、生物医药产业

以生物医药产业园为载体，重点引进生物制剂、功能食品、生物材料、医疗器械等企业，依托良好的产业基础及专业人才优势，利用快捷高效的立体交通网络，出台特殊的优惠政策和贴心的投资服务，致力打造中原医药产业孵化园。

生物医药产业园总面积约2400亩，主要以生物医药、医械制造、医药物流三大产业体系为核心，以功能食品、中药材深加工、医疗器械为生产主体，围绕强链、补链、延链招商目标，充分发挥天地药业龙头带动作用，打造集研发、生产、包装、物流、营销于一体的生态化、集约化、专业化的全国一流现代生物医药产业园区。现入驻企业有天地药业、康诺药业、联昌药业、普生药业、红枫叶生物、伟龙兽药等国内多家生物医药领军企业和产业链上下游企业5家，逐步构建生物医药全产业链条发展格局。

今后发展方向

“智慧化”将是鼓楼区生物医药产业园建设的核心方向。以“驻点招商”为切入点，计划在全国开展靶向招商，引进更有实力的生物医药产业龙头企业，借助现有龙头企业和园区医药物流配送体系的有利条件，加强与中游环节骨干企业的联系，加快形成全产业链条特色产业园。



Future development direction

With the integration and development of culture, business and tourism as the core, adhering to the concept of "development in protection and protection in construction", relying on unique geographical advantages and rich resource endowments, we will introduce and nurture cultural creative projects, vigorously build cultural boutiques, protect and inherit cultural relics, innovate and develop modern service industries, actively promote the in-depth integration of culture, business and tourism, and create a new highland for the development of the culture and tourism industry.

II New digital building assembly industry

Taking the Henan Digital Building Industrial Park under construction in our district as a starting point, we will build a digital construction industry comprehensive demonstration park integrating prefabricated building system, information system technology research and development, building materials supporting and building equipment and other forms of business.

Henan Construction Digital Industrial Park is located in the southwest of our city, west of Kaiwei Road and south of Zhengmin Expressway, covering an area of 2160 mu, with a total investment of 4 billion yuan. It is a comprehensive demonstration park for the construction industry, mainly focusing on the modernization of the construction industry, with the construction service industry and the construction finance industry as the core support, and covering the super qualified construction enterprises, architectural planning and design, prefabricated building systems, information system technology research and development, building materials supporting, construction equipment and other forms of business. After completion, it will cover the construction market within 80 kilometers of transportation distance, such as Kaifeng City, Zhengbian New Area and Airport District, with an annual output value of 60 billion yuan and a good market prospect. According to the investment promotion idea of "leading project introduction, supporting enterprise follow-up, and industrial cluster development", the company has actively docked with Hongyuan Residential Engineering Co., Ltd., Gaochuang Residential Engineering Co., Ltd., Zhuxin Building Materials Co., Ltd., Zhongcheng Assembly Co., Ltd., and Lianze Prefabricated Building Project. Through the investment promotion of the industrial chain, Zhejiang Zhengfang Group has invested 500 million yuan in Zhengkun New Fabricated Building Materials Project A batch of new prefabricated building materials projects with large investment scale, high technology content and strong driving effect, such as Shengheng New Fabricated Environmental Protection Building Materials Project with an investment of 300 million yuan from Henan First Construction, are rapidly advancing and are expected to start construction this year.

III Biomedical industry

Taking the Biomedical Industrial Park as the carrier, we will focus on introducing biological agents, functional food, biological materials, medical devices and other enterprises, rely on good industrial foundation and professional talent advantages, make use of fast and efficient three-dimensional transportation network, issue special preferential policies and considerate investment services, and strive to build the Central Plains Medical Industry Incubation Park.

With a total area of about 2400 mu, the Biomedical Industrial Park mainly focuses on the three industrial systems of biomedicine, medical equipment manufacturing and medical logistics, takes functional food, deep processing of traditional Chinese medicine, and medical equipment as the main body of production, focuses on the goal of strengthening the chain, supplementing the chain, and extending the chain investment, gives full play to the leading role of Tiandi Pharmaceutical, and creates an ecological, intensive A professional national first-class modern biomedical industrial park. At present, there are five domestic leading biomedical enterprises and five upstream and downstream enterprises in the industrial chain, such as Tiandi Pharmaceutical, Kangnuo Pharmaceutical, Lianchang Pharmaceutical, Pusheng Pharmaceutical, Red Maple Leaf Biology, Weilong Veterinary Medicine, etc., gradually building the development pattern of the whole industrial chain of biomedicine.

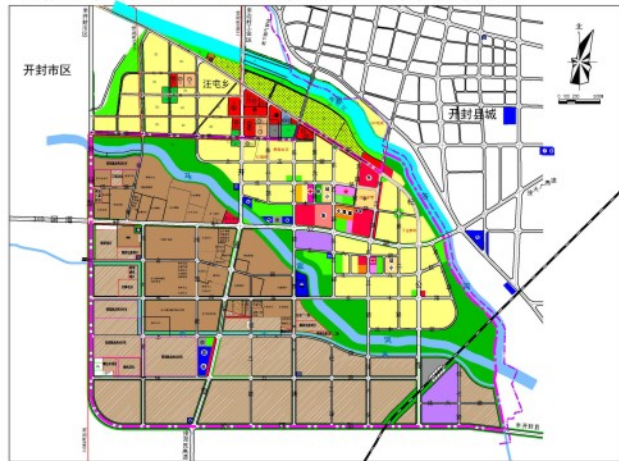
Future development direction

"Intelligence" will be the core direction of the construction of Gulou District Biomedical Industrial Park. Taking the "resident investment promotion" as the starting point, it is planned to carry out targeted investment promotion nationwide, introduce more powerful leading enterprises in the biomedical industry, strengthen the connection with the backbone enterprises in the middle reaches of the park by virtue of the advantages of the existing leading enterprises and the park's pharmaceutical logistics distribution system, and accelerate the formation of a characteristic industrial park with a full industrial chain.



禹王台区 YUWANGTAI DISTRICT

开封市精细化工产业集聚区总体发展规划



用地规划图



区域概况

禹王台区位于开封市区东南部，面积60平方公里，人口15万，辖两个乡、五个街道和两个产业园区。禹王台区交通便利，东临大广高速、日南高速，西傍京珠高速、安罗高速，南靠郑民高速，北依连霍高速；310国道贯穿东西，陇海铁路和正在筹建的郑开城际铁路、郑商铁路开封支线穿境而过，京广、京九铁路左右为邻，距郑州国际机场、郑州高铁站40分钟车程。

优越的地理位置，便利的交通条件，使禹王台区成为豫东地区的交通枢纽和物资集散地。

产业发展

在产业布局方面，有四大产业发展片区，分别是开封市精细化工开发区、开封市商贸物流园区、繁塔·禹王台·清明上河片区、开封火车站片区。

开封市精细化工开发区 总体规划面积15.3平方公里，是开封市制造立市的重要支撑之一，是市委市政府打造千亿产业集群、百亿产业链条的重要承载地，正在全力创建省级高新技术产业园区。开发区主导产业为精细化工、化工新材料，下一步将争创省级、国家级高新技术产业开发区和国家级绿色化工园区，打造全国精细化工产业基地和精细化工千亿产业集群，当好全市制造业高质量发展开路先锋。

商贸物流产业园区 规划面积约3.5平方公里，重点发展商贸仓储物流业，以建设河南省区域物流枢纽为目标，聚焦商贸批发、冷链物流、电子商务产业，重点引进国内物流50强和5A级以上知名物流企业，供应链龙头企业和快递品牌企业，积极推动开封市物流分拨中心建设。谋划建设医药批发、小商品生产加工，汽车贸易等专业园中园，拖动商贸批发与生产加工、物流配送相贯通，实现生产、交易、仓储、配送一体化，早日打造成河南省现代服务业专业园区。

繁塔·禹王台·清明上河片区 禹王台区历史文化资源遗存丰富，这里坐落着千古名园禹王台、千年古塔繁塔，传承着大禹治水精神，目前辖区拥有国保级文物4处，省保级文物5处，市保级文物5处，其他不可移动文物及历史建筑10余处。下一步，将以军事、乡村、工业旅游等为补充，走差异化、全域化发展之路，加快创建河南省全域旅游示范区。

火车站周边老城改造区 依照“一核、两轴、四片区”总体发展布局，以开封火车站前综合交通枢纽工程建设和机场东路城市综合体开发建设为抓手，全面实施棚户区、城中村改造和城市更新。以棚户区、城中村改造为核心，结合老旧市场、工业企业外迁，加大城市开发建设力度，推进城乡融合、产城融合、工商融合、文旅融合和军地融合，建设“居住环境优美、基础设施完善、服务功能提升、长效管理健全”的南部新城区，打造“宜居、宜业、宜养、宜游”的高品质城区。

District Profile

Yuwangtai District is located in the southeast of Kaifeng City, with an area of 60 square kilometers and a population of 150000. It has jurisdiction over two townships, five streets and two industrial parks. Yuwangtai District has convenient transportation, with Daguang Expressway and Ri'nan Expressway in the east, Beijing Zhuhai Expressway and Anluo Expressway in the west, Zhengmin Expressway in the south and Lianhuo Expressway in the north; National Highway 310 runs through the east and west. Longhai Railway, Zhengzhou Kaifeng Intercity Railway and Kaifeng Branch of Zhengzhou Shanghaiguan Railway, which are under construction, pass through the territory. Beijing Guangzhou Railway and Beijing Kowloon Railway are adjacent to each other. It is 40 minutes' drive from Zhengzhou International Airport and Zhengzhou High speed Railway Station.

The superior geographical location and convenient transportation conditions make Yuwangtai District become the transportation hub and material distribution center in the east of Henan.

Industrial development

In terms of industrial layout, there are four major industrial development areas, namely Kaifeng Fine Chemical Development Zone, Kaifeng Commercial Logistics Park, Fanta · Yuwangtai · Qingming Shanghe District and Kaifeng Railway Station District.

The overall planning area of Kaifeng Fine Chemical Industry Development Zone is 15.3 square kilometers. It is one of the important supports for Kaifeng to build a manufacturing city, an important bearing place for the municipal party committee and government to build a 100 billion industry cluster and a 10 billion industry chain, and is striving to build a provincial high-tech industrial park. The leading industries of the development zone are fine chemical industry and new chemical materials. Next, it will strive to create a provincial and national high-tech industrial development zone and a national green chemical park, build a national fine chemical industry base and a fine chemical industry cluster of 100 billion yuan, and be a pioneer of high-quality development of the city's manufacturing industry.

The commercial logistics industrial park is planned to cover an area of about 3.5 square kilometers. It focuses on the development of commercial warehousing logistics industry. With the goal of building a regional logistics hub in Henan Province, it focuses on commercial wholesale, cold chain logistics, and e-commerce industries. It focuses on introducing top 50 domestic logistics enterprises and well-known logistics enterprises above 5A level, leading supply chain enterprises, and express brand enterprises, and actively promotes the construction of Kaifeng logistics distribution center. Plan to build a professional park in the park for pharmaceutical whole sale, small commodity production and processing, automobile trade, etc., drive the integration of commercial wholesale, production and processing, and logistics distribution, realize the integration of production, trading, warehousing, and distribution, and build a professional park for Henan modern service industry as soon as possible.

Fanta · Yuwangtai · Qingming Shanghe District Yuwangtai District is rich in historical and cultural resources. It is located in Yuwangtai, a famous garden for thousands of years. It inherits the spirit of Dayu's flood control. At present, the district has 4 state-level cultural relics, 5 provincial level cultural relics, 5 municipal level cultural relics, and more than 10 other immovable cultural relics and historical buildings. In the next step, we will take the road of differentiated and global development, and accelerate the establishment of Henan Province's global tourism demonstration zone, supplemented by military, rural and industrial tourism.

In accordance with the overall development layout of "one core, two axes and four areas", the old city reconstruction area around the railway station will comprehensively implement the reconstruction of shantytowns, villages in cities and urban renewal by focusing on the construction of the comprehensive transportation hub in front of Kaifeng Railway Station and the development and construction of the urban complex on East Airport Road. With the transformation of shantytowns and villages in cities as the core, in combination with the relocation of old markets and industrial enterprises, we will intensify urban development and construction, promote the integration of urban and rural areas, industry and city, industry and commerce, culture and tourism, and military and civilian areas, build a new southern urban area with "beautiful living environment, perfect infrastructure, improved service functions, and sound long-term management", and create a high-quality urban area that is "suitable for living, working, raising, and traveling".





服务配套

便捷的交通网络。禹王台区东临大广高速、日南高速，西傍京珠高速、安罗高速，南靠郑民高速，北依连霍高速；310国道贯穿东西，陇海铁路和正在筹建的郑开城际铁路、郑商铁路开封支线穿境而过，京广、京九铁路左右为邻，距郑州国际机场、郑州高铁站40分钟车程。

前瞻的发展布局。市委市政府提出打造的发展布局，其中新型工业化城市、中原现代服务业之都，禹王台区均占据重要位置。精细化工产业集聚区更是市委市政府打造千亿产业集群、百亿产业链条的重要承载地，正在全力创建省级高新技术产业园区。

良好的工业基础。禹王台区工业基础雄厚，是河南省近现代工业重要发源地之一，拥有种类和数量丰富的工业遗产资源，河南省最早的官办企业（兵工局）、开封机械厂、开封啤酒厂、开封制药厂、开封卷烟厂、开封搪瓷厂、开封油脂化工厂等为禹王台区工业发展奠定了良好的基础，如今易成新能、东大化工、九泓化工、双塔涂料等公司都是行业的龙头。

优越的商贸区位。禹王台区是豫东地区重要的物资集散地，河南省首批区域物流枢纽之一，开封市唯一的商贸物流园区。开封市物流分拨中心、钢材市场、建材市场、义乌小商品城、灯具市场、厨具市场、布匹市场、五金电料市场、家具市场、蔬菜批发市场等都在辖区内。

丰富的文化底蕴。禹王台区坐落着千古名园禹王台、千年古塔繁塔，绘就了盛世清明，浮现出东京梦华。汴京八景，独占半壁，春赏“繁台春色”、夏观“隋堤烟柳”、秋聆“汴水秋声”、冬品“梁园雪霁”。这里历史建筑诸多，毛主席1952年视察开封时入住的红洋楼，以及邮政大楼、柯家楼等建筑中西合璧、顾盼生辉；百年开封火车站、城市轻轨托起经济腾飞梦。目前辖区拥有国保级文物4处，省保级文物5处，市保级文物5处，其他不可移动文物及历史建筑10余处。

“开封菊乡，大宋花城”，南郊乡是国家林业局、中国花卉协会命名的全国唯一的菊花之乡，辖区驻军多，是新中国空降兵的起源地，是国产最大飞机运20重要基地。百年开封高中，开河南省高中教育之先河，建校100余年来，先后走出13名院士。

Services

Convenient transportation network. Yuwangtai District is adjacent to Daguang Expressway and Ri'nan Expressway in the east, Beijing Zhuhai Expressway and Anluo Expressway in the west, Zhengmin Expressway in the south and Lianhuo Expressway in the north; National Highway 310 runs through the east and west. Longhai Railway, Zhengzhou Kaifeng Intercity Railway and Kaifeng Branch of Zhengzhou Shanghai Railway, which are under construction, pass through the territory. Beijing Guangzhou Railway and Beijing Kowloon Railway are adjacent to each other. It is 40 minutes' drive from Zhengzhou International Airport and Zhengzhou High speed Railway Station.

Prospective development layout. Yuwangtai District occupies an important position in the development layout proposed by the municipal party committee and government, including a new industrialized city, a modern service industry capital in the Central Plains. The fine chemical industry cluster is an important place for the municipal party committee and government to build a hundred billion industry cluster and ten billion industry chain, and is striving to build a provincial high-tech industrial park.

Good industrial foundation. Yuwangtai District has a solid industrial foundation. It is one of the important birthplaces of modern industry in Henan Province. It has rich industrial heritage resources in variety and quantity. The earliest official enterprises (Ordnance Industry Bureau), Kaifeng Machinery Factory, Kaifeng Beer Factory, Kaifeng Pharmaceutical Factory, Kaifeng Cigarette Factory, Kaifeng Enamel Factory, Kaifeng Grease Chemical Factory, etc. in Henan Province have laid a good foundation for the industrial development of Yuwangtai District. Now Yicheng Xinneng, Dongda Chemical, JiuHong Chemical Shuangta Paint and other companies are the industry leaders.

Superior business location. Yuwangtai District is an important material distribution center in eastern Henan, one of the first batch of regional logistics hubs in Henan Province, and the only commercial logistics park in Kaifeng. Kaifeng Logistics Distribution Center, steel market, building materials market, Yiwu Small Commodity City, lamps market, kitchenware market, cloth market, hardware and electrical materials market, furniture market, vegetable wholesale market, etc. are all within the jurisdiction.

Rich cultural heritage. Yuwangtai District is located in the ancient famous garden Yuwangtai, the millennium ancient pagodas and the numerous pagodas, which painted the prosperous Qingming era and emerged the dream of Tokyo. The eight sceneries of Bianjing, which occupy half of the city, enjoy "the spring scenery of Fantai" in spring, "the willows on Sui dike" in summer, "the sound of Bianshui in autumn" in autumn, and "the snow in Liangyuan" in winter. There are many historical buildings here. Chairman Mao visited the Hongyang Building in Kaifeng in 1952, as well as the Post Building, Kejia Building and other buildings, which are both Chinese and Western; Kaifeng Railway Station and urban light rail have held the dream of economic take-off for a century. At present, the district has 4 state-level cultural relics, 5 provincial level cultural relics, 5 municipal level cultural relics, and more than 10 other immovable cultural relics and historical buildings.

"Kaifeng Chrysanthemum Township, the Song Dynasty Flower City", Nanjiao Township is the only Chrysanthemum Township in China named by the State Forestry Administration and the China Flower Association. With many garrisons under its jurisdiction, it is the origin of airborne troops in New China and the largest 20 important bases for aircraft transportation in China. Kaifeng High School has been a pioneer of high school education in Henan Province for a hundred years. Since its establishment for more than 100 years, 13 academicians have successively emerged.



投资环境

INVESTMENT ENVIRONMENT



城市基础设施完善，功能齐全。多条铁路、公路、城际交通在区域内交织，密度高于全省、全国水平；空运便利，物流、仓储及货运优势明显，货运量和货物周转量连年高速增长，开封已发展成为一个现代物流业畅通无阻的无障碍平台。城区道路系统完善，主次干路比例合理。通讯事业发达，京九、郑济、郑徐等光缆在开封交汇，全市所有的乡镇已实现光缆传输，移动通信覆盖全区域，能为客商提供便捷的通讯联系。城区排水管网覆盖面广，市区生活污水处理厂共6座，其中东、西两个日处理能力分别约为20万吨和12万吨的污水处理厂，北区净水厂日处理能力为5万吨，包公湖污水处理厂日处理能力为2万吨。开封城乡一体化示范区马家河污水处理厂日处理能力为10万吨，所属各县及各产业集聚区分别建有污水处理厂。垃圾处理已成功采用垃圾发电新工艺。开封现有950吨/小时蒸汽供热站，国电投开封发电有限公司2×63万千瓦发电机组供热等热源点，全市供热主管网总长达401.6公里，总供热面积达3800万平方米，地热供暖面积1200万平方米。

水：开封市北濒黄河，水资源得天独厚，地表水、地下水储量丰富，城区内湖泊、坑塘星罗棋布。引黄分配指标5.5亿，是我市主要水源之一。全市多年平均降雨量为646.4mm，多年平均水资源总量为10.02亿m³（其中地表水资源量3.99亿m³，地下水资源量7.41亿m³，重复计算量1.38亿m³）。市区有三个制水厂、两个水源厂，日供水能力62.5万吨，新建开封市新区二水厂已完成通水，年底投入运行后供水规模达20万吨；所属县及各产业集聚区供水设施完善。

电：开封市城市生活垃圾焚烧发电厂日处理生活垃圾1000吨，基本配置采用3台350吨/天的国产两段式焚烧炉及单台蒸发量27.8t/h的余热锅炉，两台9MW汽轮发电机组，项目每年发电量约1亿度，可满足1万户居民一年家庭用电量。开封供电区担负着开封市区、四县以及陇海铁路开封段电气化机车的供电任务。开封市拥有500kv变电站2座，220kv变电站15座，110kv变电站56座。同时，我市大力发展光伏、风电等新能源，建成并网约120万千瓦。供电价格在华中电网六省市中处于较低水平，特别是大工业用电价格更具有较低的明显优势。充足的电力资源和较低的价格优势，为本区域经济社会发展，特别是为大工业的发展以及人民生活水平提高，提供了优质的保障。

天然气：中原油田至开封输气管道，“西气东输二线”平泰支线和郑州东、开封至商丘等地方支线在开封境内穿越。供气管网遍及市区主干道和生活小区，实现天然气的双气源供气。完善的天然气管网为开封的生活、生产提供了安全可靠的供气保障。

The city has complete and fully functional infrastructures. A number of railroads, highways and intercity traffic are interwoven in the region, and the density is higher than the provincial and national levels. Kaifeng has developed into an accessible platform for modern logistics industry goods to flow smoothly with convenient air transportation, obvious advantages of logistics, storage and freight, and rapid growth of freight volume and cargo turnover. The road system in the city is perfect, and the ratio of main and secondary roads is reasonable. The communication business is well-developed. Fiber optic cables of Beijing-Kowloon, Zhengzhou-Jinan and Zhengzhou-Xuzhou intersect in Kaifeng, and all towns in the city have realized fiber optic cable transmission, and mobile communication covers the whole region, which can provide convenient communication links for business. The urban drainage network covers a wide area, and there are 6 urban domestic sewage treatment plants, including two sewage treatment plants in the east and west with a daily treatment capacity of about 200,000 tons and 120,000 tons respectively, a water purification plant in the north with a daily treatment capacity of 50,000 tons, and a sewage treatment plant in Baogong Lake with a daily treatment capacity of 20,000 tons. The daily treatment capacity of Majiahe Sewage Treatment Plant in Kaifeng Urban-Rural Integration Demonstration Zone is 100,000 tons, and sewage treatment plants have been built in each of the counties and industrial clusters. Garbage treatment has successfully adopted the new process of garbage power generation. Kaifeng has 950 tons/hour steam heating station, 2×630,000 kilowatt generating units of State Power Investment Kaifeng Power Generation Co., Ltd. for heat supply and other heat sources. The total length of the city's heating main network reaches 401.6 kilometers, with a total heating area of 38 million square meters and geothermal heating area of 12 million square meters.

Water: Kaifeng City is bordered by the Yellow River in the north and is blessed with abundant water resources, surface water and groundwater reserves, and lakes and ponds are scattered in the city. The allocation index of the Yellow River is 550 million, which is one of the main water sources in the city. The city's average multi-year rainfall is 646.4mm, and the total average multi-year water resources is 1,002 million m³ (including 399 million m³ of surface water resources, 741 million m³ of underground water resources and 138 million m³ of double counting). There are three water production plants and two water supply plants in the city, with a daily water supply capacity of 625,000 tons. The newly-built Kaifeng New District No.2 Water Plant has been started to run water, and the scale of water supply will reach 200,000 tons after being put into operation at the end of the year. And the water supply facilities in the counties and industrial clusters are perfect.

Electricity: Kaifeng municipal waste incineration power plant treats 1,000 tons of domestic waste per day, with a basic configuration of three domestic two-stage incinerators of 350 tons/day and a single evaporation capacity of 27.8 tons/hour of waste heat boiler. The project of two 9MW turbine generator sets generate about 100 million degrees of electricity per year to meet the annual household electricity consumption of 10,000 residents. Kaifeng Power Supply District is responsible for the power supply of Kaifeng urban area, four counties and the electrified locomotives of Kaifeng section of Longhai Railway. Kaifeng City has two 500kv substations, fifteen 220kv substations and fifty-six 110kv substations. At the same time, the city vigorously develops new energy sources such as photovoltaic and wind power, and has built and connected to the grid about 1.2 million kilowatts. The price of electricity supply is at a lower level among the six provinces and cities in Central China, especially the price of electricity for large industries has the obvious advantage of being lower. The sufficient power resources and low price advantage provide a high quality guarantee for the economic and social development of the region, especially for the development of large industries and the improvement of people's living standard.

Natural gas: The gas pipeline from Zhongyuan Oilfield to Kaifeng, the Pingtai branch of the Second West-East Gas Transmission Line and the local branch lines from Zhengzhou East and Kaifeng to Shangqiu traverse the territory of Kaifeng. The gas supply network covers the main roads and living communities in the city, realizing dual gas supply sources. The perfect natural gas pipeline network provides a safe and reliable gas supply for people's life and production in Kaifeng.



开封市招商引资优惠政策“黄金30条”

"30 GOLDEN ARTICLES"

THE INVESTMENT-ATTRACTION PREFERENTIAL POLICY OF KAIFENG CITY

第一条 引进的符合我市主导产业发展的工业项目，土地出让底价按工业用地出让最低价标准的70%执行；土地取得成本高于最低价70%的，以实际成本作为起始价。

对投资方给予主导产业发展专项奖励，奖励标准按土地实际出让价30%-70%；固定资产一次性投资在5亿元以上，相关奖励另行制定规定。

第二条 引进的外地企业通过兼并、重组、注资合作等方式利用我市现有闲置及低效用地新建项目和外地企业对本市企业实施兼并、重组的，经我市相关部门批准，可按规定办理土地使用权变更登记手续。对重组企业新建项目有用地需求的，参照第一条执行。

第三条 由政府代建项目厂房及厂区道路、通讯、水、电等基础设施的项目，企业自产生税收的第一个年度起5年内分期回购。投资方租赁厂房的项目，按照前3年免缴、后2年减半的标准由政府给予房租补贴。

第四条 符合我市主导产业又属于产业链薄弱环节且固定资产投资额超过5亿元的重大项目落户本市，最高给予300万元奖励。

第五条 外商投资企业到位资金达到1亿元人民币以上的，按其固定资产投资额的1%给予奖励，奖励金额最高不超过300万元。

第六条 新引进的属于我市主导产业的工业项目，年上缴税收在500万元以上的，前两年按照企业地方贡献程度给予适当的奖励。

第七条 引进并在我市注册生产新能源汽车的整车企业，符合相关条件的，投产后一次性给予5000万元的奖励。

对新能源整车生产项目、新能源汽车动力电池、电机、电控生产项目给予补助，补助资金最高不超过1000万元。

第八条 对引进世界1000强、中国500强、中央大型企业、中国民营企业500强、国内上市大企业投资新建工业项目以及投资新建高新技术项目，除享受本文规定的工业项目优惠政策外，在用热、用电、用气方面相关政策另行制定规定。

第九条 新引进工业企业当年上缴税收在2000万元以上的，对企业货物物流运输费用给予财政补贴，3年内，每年补贴额度不超过300万元。

第十条 引进的投资额5亿元以上的现代物流产业项目（不含产业配套），在土地、企业税费等方面可享受我市“七大产业项目（工业类）引进的优惠政策”支持措施。

第十一条 对新引进投资额在5亿元以上具备四星级（含四星级）以上酒店标准的和对新引进社会资本投资建成并成功创建国家4A、5A级旅游景区或省级（产业融合）旅游示范区的，由项目所在地给予50至200万元奖励。

第十二条 鼓励引进和新设金融机构。对新引进市级以上金融分支机构、金融配套服务机构，新注册设立或新迁入的金融机构总部、金融配套服务机构总部、融资租赁企业、公司制形式设立的股权投资基金企业、合伙制形式设立的股权投资基金企业，按照相关条件要求，最高给予1000万元的落户奖励。

第十三条 鼓励促进商贸业项目引进，对新注册的批发、零售业企业，符合相关条件的，年纳税额每增加500万元给予50万元奖励；对新注册的住宿餐饮企业，年纳税额每增加100万元，给予奖励50万元，连续奖励3年。

第十四条 对新引进落户我市的医疗机构、互联网医疗、健康大数据、精准医疗、医疗旅游及第三方医学检验中心、医疗影像中心、病理诊断中心等健康服务新业态企业，以资金实际到位并形成固定资产，每增加1000万元给予50万元奖励。单个项目最高给予800万元奖励。

第十五条 鼓励跨境电子商务龙头企业引进。对在开封设立全国性或区域性总部的跨境电子商务企业，按照落户首个整年度跨境电子商务进出口额，最高给予300万元资金扶持。对在我市租赁仓库开展跨境电子商务业务的企业，连续三年给予企业年扶持金额最高不超过150万元租金补助。

第十六条 积极引进大型汽车整车进口贸易企业集聚我市，鼓励支持利用开封口岸开展整车进口业务，对注册在我市的汽车贸易企业，从开封口岸进口整车，享受每辆3000元的补贴。对在我市举办进口汽车展览会，符合条件的，给予100万元的汽车展会补贴；对在我市租用仓库存放自开封口岸进口汽车的，连续三年给予企业年扶持金额最高不超过150万元租金补助。

Article 1 For imported industrial projects that meet the development of the city's leading industries, the reserve price for land transfer shall be executed at 70% of the lowest price standard for industrial land transfer; if the land acquisition cost is higher than 70% of the lowest price, the actual cost shall be used as the starting price.

Investors will be given special rewards for the development of leading industries, and the reward standard will be 30%-70% of the actual land transfer price; for a one-time investment in fixed assets of more than 500 million yuan, relevant rewards will be separately formulated.

Article 2 Introduced foreign enterprises that use the city's existing idle and low-utility land to build new projects and foreign enterprises to implement mergers and reorganizations of enterprises in this city through mergers, reorganizations, capital injection cooperation, etc., can go through the registration procedures for land use right change in accordance with regulations, approved by the relevant departments of the city. If there is a useful need for a newly-built project of a reorganized enterprise, it shall be implemented with reference to Article 1.

Article 3 For projects where the government builds project factories and roads, communications, water, electricity and other infrastructure projects on behalf of the government, the enterprise will repurchase them in installments within 5 years from the first year of taxation. For projects where the investor rents workshops, the government will provide rent subsidies in accordance with the standards of exemption for the first three years and halving for the next two years.

Article 4 If major projects that conform to the leading industries of our city and belong to the weak links of the industrial chain and whose fixed asset investment exceeds 500 million yuan are settled in this city, the maximum reward is 3 million yuan.

Article 5 For foreign-invested enterprises where the funds in place reach 100 million yuan or more, they will be rewarded at 1% of their fixed asset investment, and the maximum amount of rewards will not exceed 3 million yuan.

Article 6 For newly introduced industrial projects that belong to the leading industries of our city, and the annual tax payment is more than 5 million yuan, appropriate rewards will be given according to the level of local contribution of the enterprise in the first two years.

Article 7 Vehicle enterprises that introduce and register in our city to produce new energy vehicles and meet the relevant conditions will be given a one-time reward of 50 million yuan after they are put into production. Subsidies will be given to new energy vehicle production projects, new energy vehicle power batteries, motors, and electronic control production projects, with the maximum subsidy fund not exceeding 10 million yuan.

Article 8 For projects to introduce the world's top 1000, China's top 500, large central enterprises, top 500 China's private enterprises, large domestic listed companies which invest in new industrial projects and new high-tech projects, in addition to enjoying the preferential policies for industrial projects stipulated in this article, relevant policies on heat, electricity, and gas use will be formulated separately.

Article 9 For newly introduced industrial enterprises that have paid more than 20 million yuan in tax that year, financial subsidies will be given to the logistics and transportation costs of the enterprises' goods, and the annual subsidy amount shall not exceed 3 million yuan within 3 years.

Article 10 The introduced modern logistics industry projects with an investment of more than 500 million yuan (excluding industrial supporting facilities) can enjoy the support policies of the city's "Preferential Policies for Introducing Seven Major Industrial Projects (Industrial)" in terms of land and corporate taxes and fees.

Article 11 For projects which the newly introduced investment amount is more than 500 million yuan with the hotel standard of four-star (including four-star) or higher, and the newly introduced social capital is invested to build and successfully create a national 4A, 5A-level tourist attraction or a provincial level (Industry integration) in the tourism demonstration zone, 500,000 to 2 million yuan will be rewarded by the project location.

Article 12 Encourage the introduction and establishment of new financial institutions. For newly introduced financial branches and financial supporting service institutions at the city level or above, newly registered or newly moved financial institution headquarters, financial supporting service institution headquarters, financial leasing enterprises, equity investment fund enterprises established in the form of corporate system, or in form of partnership, in accordance with the relevant requirements, a settlement reward will be given up to 10 million yuan.

Article 13 Encourage and promote the introduction of commerce and trade projects. For newly registered wholesale and retail enterprises whose annual tax payment increases 5 million yuan will be rewarded with 500,000 yuan; for newly registered accommodation and catering companies whose annual taxation increases 1 million yuan, 500,000 yuan will be awarded for 3 consecutive years.

Article 14 For the newly introduced medical institutions, Internet medical services, health big data, precision medicine, medical tourism and third-party medical inspection centers, medical imaging centers, pathological diagnosis centers and other new health service companies that have settled in our city, they will be funded. When fixed assets are in place and formed, 500,000 yuan will be rewarded for every additional 10 million yuan. Up to 8 million yuan will be awarded for a single project.

Article 15 Encourage the introduction of leading cross-border e-commerce enterprises. For cross-border e-commerce companies that have established a national or regional headquarters in Kaifeng, they will be given a maximum of 3 million yuan in financial support based on their first full-year cross-border e-commerce import and export volume. For enterprises that carry out cross-border e-commerce business in leased warehouses in our city, the maximum annual support amount to enterprises shall not exceed 1.5 million yuan in rental subsidies for three consecutive years.

Article 16 Actively introduce large-scale automobile import trade enterprises to gather in our city, and encourage and support the use of Kaifeng port to carry out whole automobile import business. For automobile trading companies registered in our city, they can enjoy a subsidy of 3,000 yuan each for importing complete vehicles from the Kaifeng port. For import auto exhibitions held in our city and meet the conditions, a subsidy of 1 million yuan will be given to auto exhibitions. For those who store imported cars from the Kaifeng port in rented warehouses in our city, the annual support amount to the enterprise shall not exceed 1.5 million yuan in rental subsidies for three consecutive years.

投资政策

INVESTMENT POLICY

第十七条 引进的国家工程实验室、国家重点实验室、国家工程（技术）研究中心、国家企业技术中心、国家制造业创新中心等国家级重大创新载体在我市设立分支机构的,引进的中央直属企业、国内行业龙头企业、知名跨国公司、国家重点大学在我市设立独立法人资格、符合我市产业发展方向的研发机构和研发总部的,引进国家、省级众创空间、科技企业孵化器、科技服务业示范企业和技术转移示范机构在我市注册成立公司的,依据其投资规模、团队水平和机构规格,按照建设单位投入资金总额度的30%给予资金奖励,最高不超过500万元。

第十八条 属于世界1000强、中央大型企业、中国企业500强、中国民营企业500强、商务部认定或备案的跨国公司等在我市设立省级以上总部和销售中心的,根据企业实缴注册资本给予落户奖励,最高给予2000万元奖励。

第十九条 新业态新模式等现代服务业产业项目,在租用办公用房（自用）时,按租赁合同每月每平方米租金的最高75%标准予以场地补贴,补贴期限为3年,每年最高不超过100万元。符合条件的总部企业在我市设立省级以上总部和销售中心的,在我市购置自用办公房产的,按每平方米1000元的标准给予一次性补贴,补贴金额不超过1000万元。3年内每年按企业在我市属地贡献的50%给予经营贡献奖励。

第二十条 院士、长江学者、国家“千人计划”人选、国际最高科技奖获得者、国家重大科技成果完成人、国家杰出青年科学基金等顶尖人才及其团队,带技术、带成果、带项目来我市创新创业和转化成果的,根据其连续3年实际产生的效益和所做的贡献给予适当奖励,累计奖励最高500万元。

第二十一条 招商引资到我市创新创业的高层次人才（团队）,按照领军人才、拔尖人才、地方突出贡献人才三个层次,分别给予500万元、300万元、200万元项目启动资金支持,对开封产业发展特别重大急需的顶尖人才项目及相当层次的人才项目,给予最高1亿元的项目资助。

第二十二条 对招商引资到我市的高层次人才创新创业项目免收行政事业性收费,并根据其在我市贡献情况,

按照有关规定,8年内每年按相应标准的90%给予补贴。

第二十三条 随同招商引资项目到我市的全日制博士、硕士,工作1年后分别按照博士8万元、硕士4万元给予安家费;工作5年后在我市购买住房的,分别一次性给予30万元、20万元购房补贴。

第二十四条 设立创新创业人才杰出贡献奖,对在开封创新创业3年以上且为经济社会发展做出重大贡献的高层次人才,经评定授予“开封市杰出人才”荣誉称号,给予100万元奖励;对引进的“人才带项目”且年度应纳税薪金50万元以上的企业高管或高层次人才,给予个人地方贡献市级留成部分的100%奖励,连续奖励3年。

第二十五条 外来企业的高管及技术骨干等高级人才,在政治待遇、职称评定及安家落户、子女入学、医疗保险、办理证照、评先表彰等方面给予优先照顾。对我市贡献较大的外来投资者,给予一定物质奖励和生活补贴,并授予“荣誉市民”称号。

第二十六条 支持参政议政。支持来汴投资企业家依照有关法律规定参选各级人大代表、政协委员,鼓励来汴投资企业家积极参政、议政、建言献策。

第二十七条 设立人才、项目伯乐奖。对引进科技项目、工业项目和高层次人才项目有突出贡献的各类商协会、中介组织（不含有偿公司）和非国家公职人员予以奖励。以实际到位资金额并形成固定资产为奖励依据,单个项目奖励最高不超过100万元。

第二十八条 对在我市高层次人才项目引进工作中作出突出贡献的用人企业和人力资源服务机构给予相关费用补贴,最高给予30万元补贴。

第二十九条 引进市外资金投资商贸物流、金融服务、健康养老、电子商务等新业态新模式项目的,项目运营后两年内地方贡献留成部分的5%给予引荐人一次性奖励。

第三十条 引进市外资金投资商贸物流、金融服务、健康养老、电子商务等新业态新模式项目的,项目运营后两年内地方贡献留成部分的5%给予引荐人一次性奖励。

备注:以上优惠政策的申请条件、奖励标准依从《开封市人民政府关于印发开封市促进招商引资若干措施的通知》（汴政〔2018〕51号）文件详细规定。

Article 17 Following institutions will be given financial rewards (fund rewards) based on their investment scale, team level and institutional specifications, and 30% of the total capital invested by the construction unit (The maximum is not more than 5 million yuan): the imported national engineering laboratory, national key laboratory, national engineering (technical) research center, national enterprise technology center, national manufacturing innovation center and other major national innovation carriers that have set up branches in our city; the introduced enterprises directly under the central government, domestic leading enterprises, well-known multinational companies, and national key universities that have established independent legal person qualifications in our city and have established R&D institutions and R&D headquarters in line with the city's industrial development direction; the technology business incubators, technology service industry demonstration enterprises and technology transfer demonstration institutions registered in our city.

Article 18 The establishment of headquarters and sales centers at or above the provincial level in our city, such as the world's top 1000 enterprises, large central enterprises, China's top 500 enterprises, China's top 500 private enterprises, multinational companies recognized or registered by the Ministry of Commerce, will be rewarded for settlement based on the paid-in registered capital, with a maximum reward of 20 million yuan.

Article 19 For modern service industry projects such as new business formats and new models, when renting office space (for self-use), a site subsidy will be provided according to the maximum 75% of the monthly rent per square meter of the lease contract. The subsidy period is 3 years. The maximum subsidy does not exceed 1 million yuan each year. For eligible corporate headquarters that set up headquarters and sales centers at or above the provincial level in our city, and purchase self-use office properties in our city, a one-time subsidy will be given at the standard of 1,000 yuan per square meter, and the subsidy amount will not exceed 10 million yuan. Each year within 3 years, 50% of the company's contribution to the city's territories will be rewarded for business contribution.

Article 20 For academicians, Yangtze River scholars, candidates from the National Thousand Talents Program, winners of the highest international science and technology awards, accomplishees of major national scientific and technological achievements, and the National Science Fund for Outstanding Youths and other top talents and their teams, they bring their own technology, achievements or projects that come to Kaifeng City for innovation, entrepreneurship and transformation of achievements, appropriate rewards will be given according to the actual benefits and contributions they have made for 3 consecutive years, with a cumulative reward of up to 5 million yuan.

Article 21 The high-level talents (teams) who attract investment to our city for innovation and entrepreneurship will be awarded 5 million yuan, 3 million yuan, and 2 million yuan respectively according to the three levels of leading talents, top talents, and outstanding local contribution talents. financial support. For the top talent projects that are particularly urgently needed for the development of Kaifeng's industry and the talent projects of a considerable level, a project subsidy of up to 100 million yuan will be given.

Article 22 The high-level talent innovation and entrepreneurship projects that attract investment to our city will be exempted from administrative fees; and based on the contribution of these projects in our city, in

accordance with relevant regulations, subsidies will be given at 90% of the corresponding standard each year for 8 years.

Article 23 The full-time doctoral and master's degree holders who accompany the investment promotion project to our city will receive a settlement allowance of 80,000 yuan for the doctoral degree and 40,000 yuan for the master's degree after 1 year of work; for those who buy housing in our city after 5 years of work, they will be paid separately. A one-off housing purchase subsidy of 300,000 yuan and 200,000 yuan will be given.

Article 24 The award for outstanding contributions of innovative and entrepreneurial talents will be established. High-level talents who have been in Kaifeng for more than 3 years of innovation and entrepreneurship and have made major contributions to economic and social development will be awarded the honorary title of "Kaifeng City Outstanding Talents" and one Million yuan reward; for the introduced "talent-bearing project" and the annual taxable salary of more than 500,000 yuan of corporate executives or high-level talents, 100% of the city-level retained part of individual local contributions will be rewarded for 3 consecutive years.

Article 25 Senior executives and technical backbones of foreign companies will be given priority in terms of political treatment, job title evaluation and settlement, children's enrollment, medical insurance, licenses, evaluation and commendation. To the foreign investors who have made great contributions to our city, certain material rewards and living allowances will be given, and the title of "Honorary Citizen" will be awarded.

Article 26 Support political participation and discussion. Support the entrepreneurs who invest in Kaifeng to run for the NPC deputies and CPPCC members at all levels in accordance with relevant laws and regulations, and encourage them to actively participate in politics, discuss politics and make suggestions and proposals.

Article 27 The establishment of talent, project Talent Award. All kinds of business associations, intermediary organizations (not excluding compensation companies) and non-state public officials who have made outstanding contributions to the introduction of science and technology projects, industrial projects and high-level talent projects will be rewarded. According to the actual amount of funds in place and the formation of fixed assets, the maximum reward for a single project shall not exceed 1 million yuan.

Article 28 Enterprises and human resources service institutions that have made outstanding contributions to the introduction of high-level talent projects in our city shall be given relevant cost subsidies, with a maximum subsidy of 300,000 yuan.

Article 29 If foreign funds are introduced to invest in projects with new formats and new modes, such as business logistics, financial services, health care for the elderly, e-commerce, etc, 5% of the retained part of local contribution within two years after the operation of the project will be given a one-time award to the introducer.

Article 30 Reducing the cost of enterprises, inclusive provisions have been given to foreign-invested enterprises in terms of land, electricity, gas, water and financing.

Remarks:The application conditions and reward standards of the above preferential policies comply with the detailed regulations in the Notice of Kaifeng Municipal People's Government on Printing and Distributing Several Measures to Promote Investment Promotion in Kaifeng City (No.51 [2018] of Kaifeng Government).

文化旅游

CULTURAL TOURISM

开封是国务院首批公布的历史文化名城，中国优秀旅游城市，国家旅游标准化示范城市，也是河南省唯一省辖市文化改革发展试验区，河南省旅游管理体制改革试点城市，河南省中原城市群和沿黄“三点一线”黄金旅游线路三大中心城市之一。开封宋都古城文化产业园是国家级文化产业示范园区。悠久的历史造就了丰厚的文化资源，形成了以宋文化为主，黄河文化、民俗文化、饮食文化、名人文化、宋词文化、菊花文化等交相辉映的文化特色。



086 中国·开封

Kaifeng is one of the first batch of historical and cultural cities announced by the State Council, an excellent tourism city in China and a national tourism standardization demonstration city. It is also the only provincial-administered city cultural reform and development experimental zone in Henan Province, a pilot city for tourism management system reform in Henan Province, and the Central Plains urban agglomeration in Henan Province, and is one of the three central cities along the “three points and one line” golden tourist route along the Yellow River. Kaifeng Songdu Ancient City Cultural Industry Park is a national-level cultural industry demonstration park. Kaifeng is rich in cultural resources and has formed the cultural characteristics of the common development of Song culture, the Yellow River culture, folk culture, food culture, celebrity culture, Song poetry culture, and chrysanthemum culture.



中国·开封 087



全境拥有历史遗存1900余处，其中全国、全省重点文物保护单位63处，全国非物质文化遗产9项。开封是一座中外驰名的旅游城市，拥有国家5A、4A级旅游景区11处，人文景观与自然景观交相辉映，古代文明与现代文明相得益彰。拥有清明上河园、龙亭、铁塔、繁塔、相国寺、开封府等一大批名胜古迹。“宋都景区水系工程”集河湖水系和文物古迹为一体，再现宋都古城“碧流绕城”的美好环境和历史盛况。开封古城墙保护与修缮工程的实施将成为城市一道靓丽的景观带。大型水上实景演出《大宋·东京梦华》和歌舞剧《千回大宋》成为展示宋文化魅力的印象画卷和“夜游开封”的重要载体。



088 中国·开封



The city has more than 1,900 historical relics, including 63 national and provincial key cultural relics protection units, and 9 national intangible cultural heritages. Kaifeng is a well-known tourist city at home and abroad, with 11 national 5A and 4A tourist attractions, rich in human and natural landscapes, ancient and modern civilizations. Kaifeng has a large number of historical sites such as Qingming Shanghe Garden, Dragon Pavilion, Iron Pagoda, Fan Pagoda, Xiangguo Temple, Kaifeng Mansion and so on. The “Songdu Scenic Area Water System Project” integrates river and lake water systems and cultural relics, recreating the beautiful environment and historical grandeur of the ancient Songdu city “Blue Stream Surrounding the City”. The implementation of the protection and repair project of the ancient city wall of Kaifeng will become a beautiful landscape belt in the city. Large-scale water live performance “The Great Song. “Tokyo Dreams” and the musical “A Thousand Back to the Great Song” have become important carriers for the impression of the charm of Song culture and the “Night Tour to Kaifeng”.



中国·开封 089



为加快我市文化旅游产业更好的发展，开封专门成立了开封市文化旅游投资集团有限公司，在挖掘和保护物质与非物质文化遗产，不断丰富文化旅游内涵的基础上，对开封的文化旅游资源进行整合投资、开发经营、创新运作，是开封文化旅游产业对外开放、调整结构、实现跨越式发展的重要投融资平台。文化旅游产业的发展将为开封经济的腾飞注入新的活力。

In order to accelerate the better development of the cultural tourism industry in our city, Kaifeng has established the Kaifeng Cultural Tourism Investment Group Co., Ltd. to excavate and protect material and intangible cultural heritage, and continuously enrich the connotation of cultural tourism. Tourism resources are integrated and invested, developed and operated, and innovatively operated. Therefore, the company is an important investment and financing platform for the opening of Kaifeng's cultural tourism industry, structural adjustment, and leap-forward development. The development of cultural tourism industry will inject new vitality into Kaifeng's economic take-off.



特色农业

CHARACTERISTIC AGRICULTURE



开封市是国家重要的优质商品粮基地和河南省粮食储备基地。素有“中原粮仓”、“河南省沿黄优质粳稻基地”的美誉。每年为国家提供商品粮超过80万吨，为国家粮食安全作出了重要贡献。

Kaifeng is an important national high-quality commercial grain base and a grain reserve base in Henan Province. It is known as the “granary of the Central Plains” and the “high-quality japonica rice base along the Yellow River in Henan Province”. It provides more than 800,000 tons of commercial grains to China every year, making an important contribution to national food security.



作为粮食和农业生产大市，结合粮食生产核心区建设规划，实施高标准粮田“百千万”建设工程，加快建设一批百亩方、千亩方和万亩方，集中打造“田地平整肥沃、灌排设施完善、农机装备齐全、技术集成到位、优质高产高效、绿色生态安全”的高标准永久性粮田。拥有一批全国知名的优势特色农产品品牌，果蔬、花生、大蒜、菊花等高效经济作物的产业化加快推进，设施农业、订单、休闲创意农业和外向型农业加快发展。大力发展生态农业、观光农业、休闲农业，提高农业综合效益。积极发展规模种养业、农产品加工业和农村服务业，推进生产、加工、物流、营销等一体化发展。到2020年，主要农产品加工转化率达到60%以上。

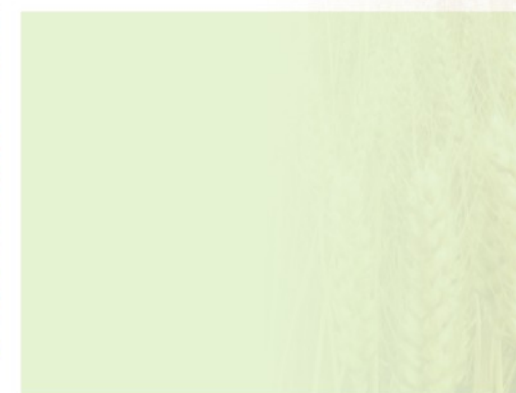
Kaifeng is a major city for food and agricultural production. We will implement the “tens of millions” construction project of high-standard grain fields in combination with the construction plan of the grain production core area, speed up the construction of a batch of 100 acres, a thousand acres and ten thousand acres, and focus on creating high-standard permanent grain fields. These fields have fertile soil, complete irrigation and drainage facilities, complete agricultural machinery equipment, and well-integrated technologies, which help achieve high yields and protect the environment. We will have a number of well-known nationally renowned agricultural products brands with advantageous characteristics. The industrialization of high-efficiency cash crops such as fruits and vegetables, peanuts, garlic, and chrysanthemums will be accelerated, and the development of facility agriculture, order, leisure and creative agriculture and export-oriented agriculture will be accelerated. We will vigorously develop ecological agriculture, sightseeing agriculture, and leisure agriculture to improve comprehensive agricultural benefits. We will actively develop large-scale planting and breeding, agricultural product processing, and rural service industries, and promote the integrated development of production, processing, logistics, and marketing. By 2020, the processing conversion rate of major agricultural products will reach over 60%.



特色农业

CHARACTERISTIC AGRICULTURE

畜牧业依托资源优质、品种优势、良好基础设施，坚持循环经济和生态畜牧的政策导向，积极推进畜牧业标准化建设，深化畜产品深加工能力，提升畜产品质量，畜牧业实现由数量到质量、由规模到标准化、由畜牧业生产到畜产品加工多层次的综合提升。开封市已成为河南省重要的饲料基地，有影响的畜产品加工基地，有特色的沿黄绿色奶牛养殖基地，全省肉牛核心养殖区，蛋鸭养殖集中地，重要的生猪肉禽生产和调出基地。在全省畜牧业综合评定中，连续多年位居全省前五名。按照“基地支持、龙头带动、流通服务、特色高效”的原则，重点打造粮食、油料、棉花、大蒜、畜禽、木业、花卉、蔬菜、淡水养殖、食用菌等十大产业链，建成粮食加工业、棉纺加工业、油脂加工业、木材加工业、畜禽养殖和加工业、特色种植业、香精香料业、菊花产业等八大农业产业化集群。形成资源共享、优势互补、特色突出、竞相发展的格局。



The animal husbandry industry, relying on high-quality resources, variety advantages, and good infrastructure, adheres to the policy guidance of circular economy and ecological animal husbandry, actively promotes the standardization of animal husbandry, deepens the ability of animal product processing, and improves the quality of animal products. The animal husbandry industry relies on high-quality resources, variety advantages, and good infrastructure, adheres to the policy guidance of circular economy and ecological animal husbandry, actively promotes the standardization of animal husbandry, deepens the ability of animal product processing, and improves the quality of animal products. Comprehensive upgrade from scale to standardization, from animal husbandry production to animal product processing. Kaifeng has become an important feed base in Henan Province, an influential livestock product processing base, a characteristic yellow-green dairy cattle breeding base, a core beef cattle breeding area in the province, a concentrated area for laying duck breeding, and important raw pork and poultry production and transfer base. In the comprehensive evaluation of the province's animal husbandry, it has ranked among the top five in the province for many years. We will continue to adhere to base support, leading industries to drive development, adhere to strengthen logistics services, adhere to our own characteristics, and focus on building the top ten major industries including grain, oilseeds, cotton, garlic, livestock and poultry, wood, flowers, vegetables, freshwater aquaculture, and edible fungi. In the industrial chain, eight agricultural Agglomeration Clusters have been built, including grain processing industry, cotton spinning processing industry, oil processing industry, wood processing industry, livestock and poultry breeding and processing industry, specialty planting industry, flavor and fragrance industry, and chrysanthemum industry. In the future, the industry will share resources, complement each other's advantages, have outstanding characteristics, and compete for development.





教育卫生

EDUCATION AND HEALTH

大力实施科教兴汴、人才强市和创新驱动战略。教育事业全面发展，基础教育办学条件显著改善，职业教育加快发展。推进健康开封建设，深化医药卫生体制改革，完善公共卫生服务体系，优化城乡医疗卫生资源配置，促进医疗卫生服务公平，卫生计生事业稳步发展。

We will vigorously implement the strategy of revitalizing science and education, strengthening the city with talents, and driving innovation. Education will be developed in an all-round way, basic education conditions will be significantly improved, and vocational education will achieve accelerate development. We will advance the health development in Kaifeng, deepen the reform of the medical and health system, improve the public health service system, optimize the allocation of urban and rural medical and health resources, promote the fairness of medical and health services, and promote the steady development of health and family planning.



教育

全市共有各级各类学校（机构）2450所，教育人口142.48万人，其中，在校生133.4万人，教职工9.08万人。幼儿园1290所，小学808所，初中229所，高中51所，中等职业学校35所（其中技工学校8所），特殊教育学校9所，工读学校1所，普通高等学校7所，全市职业技术培训机构19所。全市各级各类民办学校1168所。

EDUCATION

There are 2,450 schools (institutions) at all levels and types in the city, with an educated population of 1.424 million, of which 1.334 million are school students and 90,800 faculty members. There are 1,290 kindergartens, 808 elementary schools, 229 junior high schools, 51 high schools, 35 secondary vocational schools (including 8 technical schools), 9 special education schools, 1 work-study school, 7 general higher education schools, and the city's vocational and technical training 19 institutions. There are 1,168 private schools of all levels and types in the city.





鸟瞰图



医疗卫生

全市共有医疗卫生机构3410个，病床数32214张，其中医院94家，社区卫生服务机构87家，乡镇卫生院92个，行政村卫生室2552个，公共卫生机构62个，医学科学研究机构1个，医学在职培训机构3个，全市卫健系统在岗职工47150人，其中具有高级职称的医务人员7215人。开封市中心医院、河南大学淮河医院被确定为国家级住院医师规范化培训基地。

MEDICAL AND HEALTH

Kaifeng City has 3410 medical and health institutions with 32214 beds, including 94 hospitals, 87 community health service institutions, 92 township health centers, 2552 administrative village clinics, 62 public health institutions, and 1 medical scientific research institution. There are 3 medical on-the-job training institutions, 47,150 employees in the city's health care system, including 7,215 medical personnel with senior professional titles. Kaifeng Central Hospital and Huaihe Hospital of Henan University have been identified as national standardized training bases for resident doctors.





主要涉外服务机构
KEY FOREIGN SERVICE AGENCIES

开封市发展和改革委员会 地址：开封市八大街市直机关综合办公楼13楼 电话：0371-22666967	Kaifeng Municipal Development and Reform Commission Address: 13th floor, Comprehensive Office Building of Municipal Government, 8th Street, Kaifeng Tel: 0371-22666967
开封市工业和信息化局 地址：开封市金明东街79号 电话：0317-22581033	Bureau of Industry and Information Technology of Kaifeng Address: No. 79, Jinming East Street, Kaifeng Tel: 0371-0317-22581033
开封市商务局 地址：开封市金明东街79号 电话：0371-22771988	Kaifeng Municipal Bureau of Commerce Address: No. 79, Jinming East Street, Kaifeng Tel: 0371-22771988
开封市财政局 地址：开封市大梁路242号 电话：0371-23876021	Finance Bureau of Kaifeng Address: No. 242 of Daliang Road, Kaifeng City Tel: 0371-23876021
开封市文化广电和旅游局 地址：开封市黄河大街27号 电话：0371-23876207	Kaifeng Municipal Bureau of Cultural, Radio, Television and Tourism Address: No. 27 Huanghe Avenue, Kaifeng City Tel: 0370-23876207
开封市城乡一体化示范区管委会 地址：开封市八大街与安顺路交叉口海汇中心 电话：0371-23929226	Administration of Kaifeng Urban-rural Integration Model District Address: Haihui Center, at the intersection of Eight Streets and Anshun Road, Kaifeng Tel: 0371-23929226

开封市市场监督管理局 地址：七大街与晋安路交叉口向南 电话：0371-22783601	Administration for Market Regulation of Kaifeng City Address: South of the intersection of Seven Avenue and Jin'an Road Tel: 0371-22783601
开封市国家外汇管理局 地址：开封市金明东街77号 电话：0371-23887228	Kaifeng National Foreign Exchange Administration Bureau Address: No. 77, Jinming East Street, Kaifeng Tel: 0371-23887228
国家税务总局开封市税务局 地址：开封市金明大道138号 电话：0371-212366（纳税服务热线）	Kaifeng Municipal Tax Service, State Taxation Administration Address: No. 138 Jinming Road, Kaifeng City Tel: 0371-212366(Tax service hotline)
开封市外商服务中心 地址：开封市金明东街79号 电话：0371-22771862	Kaifeng Foreign Service Center Address: No. 79, Jinming East Street, Kaifeng Tel: 0371-22771862
开封市人民政府外事侨务办公室 地址：开封市晋安路58号 电话：0371-23965719	Foreign Affairs Office of the People's Government of Kalfeng Address: No.58,Jin'an Road,Kaifeng City Tel: 0371-23965719
开封市投资项目代理办公室 地址：郑开大道与第三大街交叉口市民之家6楼 电话：0371-23865898	Kaifeng Investment Project Agency Office Address: Floor 6,Shimin Zhijia,Intersection of Zhengkai Avenue and Sanda Street Tel: 0371-23865898